



Plan Your Visit

30259 Gold Finch Place

Fulshear, TX 77441 | MLS #28879336
\$568,000

Sq Ft	Beds	Baths	Stories	Garage
3,120	5	4.5	2	3

Fabulous 2-story plan by Newmark, the Roosevelt, features 5 bedrooms, 4 .5 baths and a 3 car tandem garage. Beautiful 20 ft ceilings in the family room add to the attractive and beautiful large windows. Stunning 8 ft door as you enter ... [READ MORE »](#)



Roosevelt



ELEVATION 1



ELEVATION 2



ELEVATION 3



ELEVATION 4



ELEVATION 5



ELEVATION 6

REV 06/24 (50)

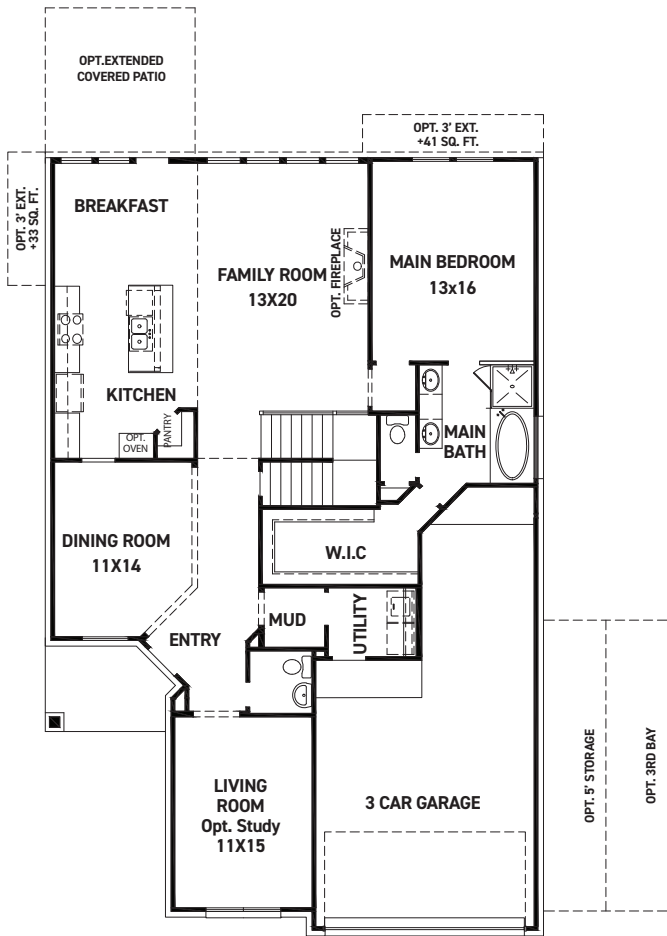


These drawings are conceptual only and are for the convenience of reference. They should not be relied upon as representations, express or implied, of the final detail of the residences. The builder expressly reserves the right to make modifications, revisions, and changes it deems desirable in its sole and absolute discretion. Dimensions and square footages are approximate and may vary with actual construction. Due to design and footage requirements not all options/elevations are available in all locations.

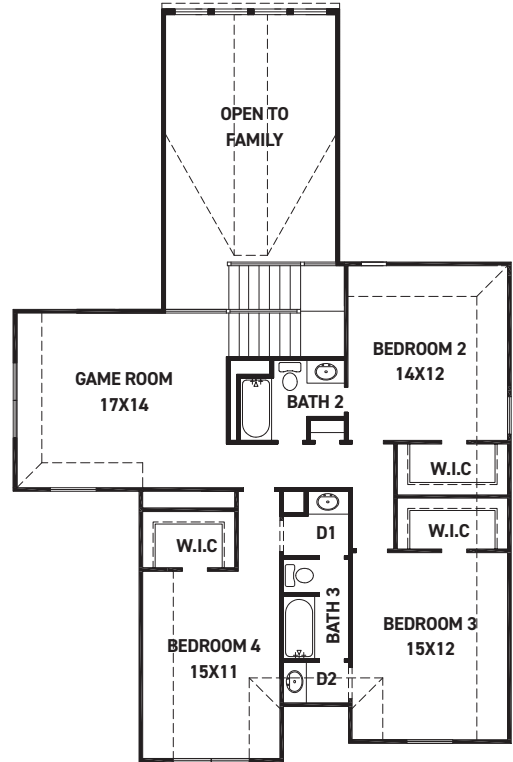


newmarkhomes.com

September 27, 2024



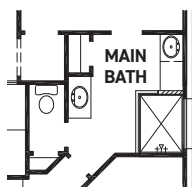
FIRST FLOOR PLAN



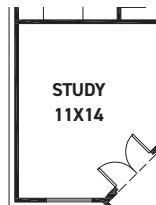
SECOND FLOOR PLAN

FEATURES:

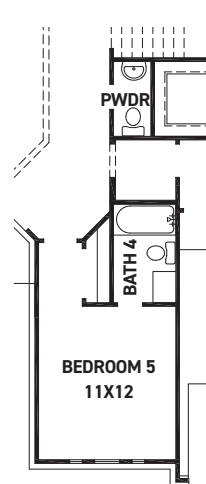
- 2,920 SQUARE FT.
- 4 BEDROOM
- 3 1/2 BATHROOM
- 3 CAR GARAGE



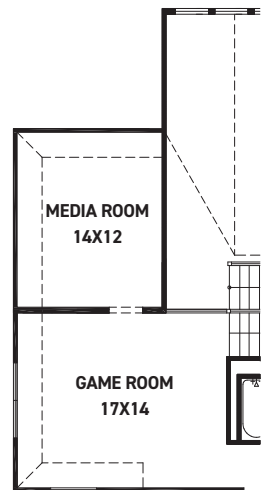
OPT. ENLARGED MAIN SHOWER



OPT. STUDY @ DINING



OPT. BEDROOM 5 W/ BATH 4 & POWDER



OPT. MEDIA ROOM +170 SQ. FT.

REV 06/24 (501)



These drawings are conceptual only and are for the convenience of reference. They should not be relied upon as representations, express or implied, of the final detail of the residences. The builder expressly reserves the right to make modifications, revisions, and changes it deems desirable in its sole and absolute discretion. Dimensions and square footages are approximate and may vary with actual construction. Due to design and footage requirements not all options/elevations are available in all locations.



newmarkhomes.com