



Plan Your Visit

30239 Gold Finch Place

Fulshear, TX 77441 | MLS #23033849
\$540,662

Sq Ft	Beds	Baths	Stories	Garage
2,880	4	3.5	2	2

Fabulous 2-story plan by Newmark, the Koblenz, features 4 bedrooms, 3 .5 baths and a 2 car garage. Beautiful 20 ft ceilings in the family room add to the attractive and beautiful large family room windows. Stunning 8 ft door as you ent... [READ MORE »](#)



ELEVATION 1



ELEVATION 2



ELEVATION 3



ELEVATION 4



ELEVATION 12



ELEVATION 13



ELEVATION 14



ELEVATION 15

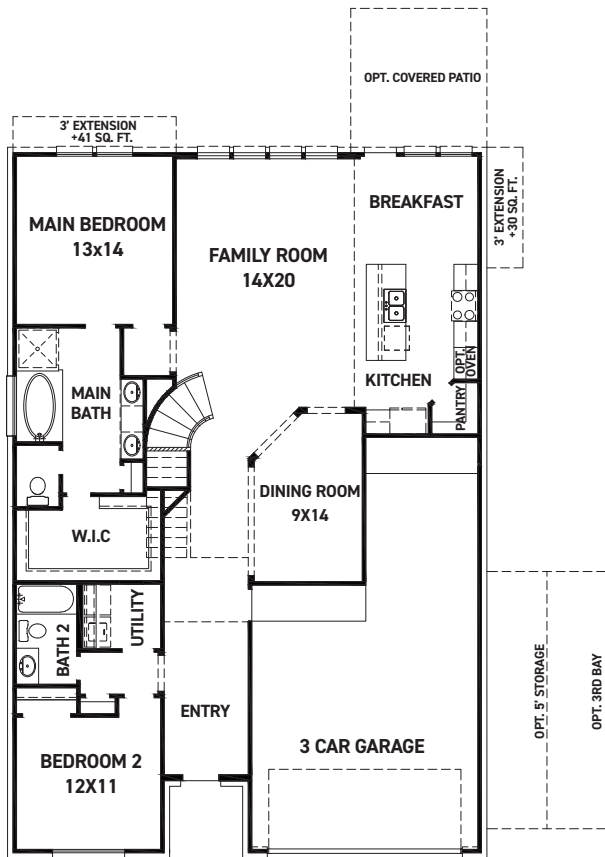
REV 06/24 (5)



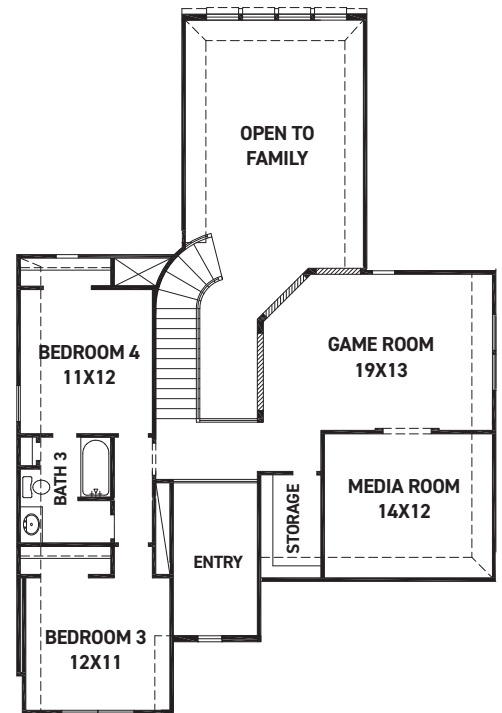
These drawings are conceptual only and are for the convenience of reference. They should not be relied upon as representations, express or implied, of the final detail of the residences. The builder expressly reserves the right to make modifications, revisions, and changes it deems desirable in its sole and absolute discretion. Dimensions and square footages are approximate and may vary with actual construction. Due to design and footage requirements not all options/elevations are available in all locations.



newmarkhomes.com



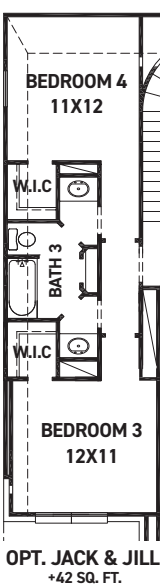
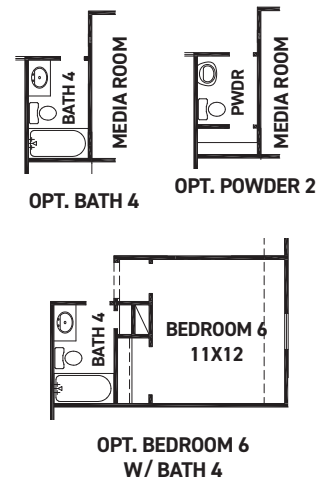
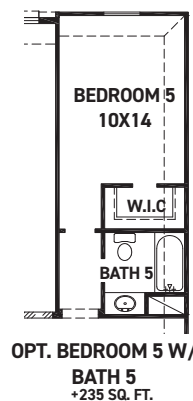
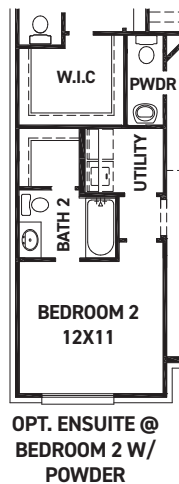
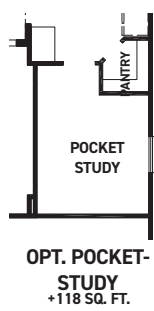
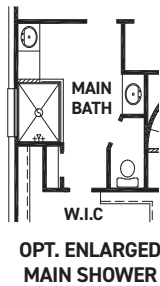
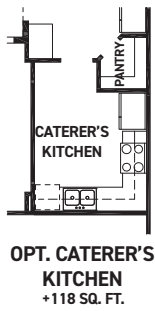
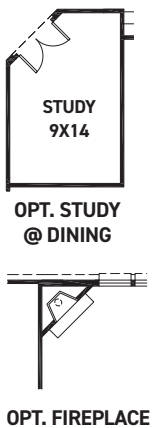
FIRST FLOOR PLAN



SECOND FLOOR PLAN

FEATURES:

- 2,762 SQUARE FT.
- 4 BEDROOM
- 3 BATHROOM
- 3 CAR GARAGE



REV 06/24 (5016)



These drawings are conceptual only and are for the convenience of reference. They should not be relied upon as representations, express or implied, of the final detail of the residences. The builder expressly reserves the right to make modifications, revisions, and changes it deems desirable in its sole and absolute discretion. Dimensions and square footages are approximate and may vary with actual construction. Due to design and footage requirements not all options/elevations are available in all locations.



newmarkhomes.com