



Plan Your Visit

30250 Gold Finch Place

Fulshear, TX 77441 | MLS #76326242
\$525,500

Sq Ft	Beds	Baths	Stories	Garage
2,799	5	4.5	2	2

Fabulous 2-story plan by Newmark, the Heidelberg, features 5 bedrooms, 4.5 baths and a 2 car garage. Beautiful 20 ft ceilings in the family room add to the attractive and beautiful large family room windows. Stunning 8 ft door as you e... [READ MORE »](#)



ELEVATION 1



ELEVATION 3



ELEVATION 4



ELEVATION 6



ELEVATION 7



ELEVATION 8

REV 10/24 (501)



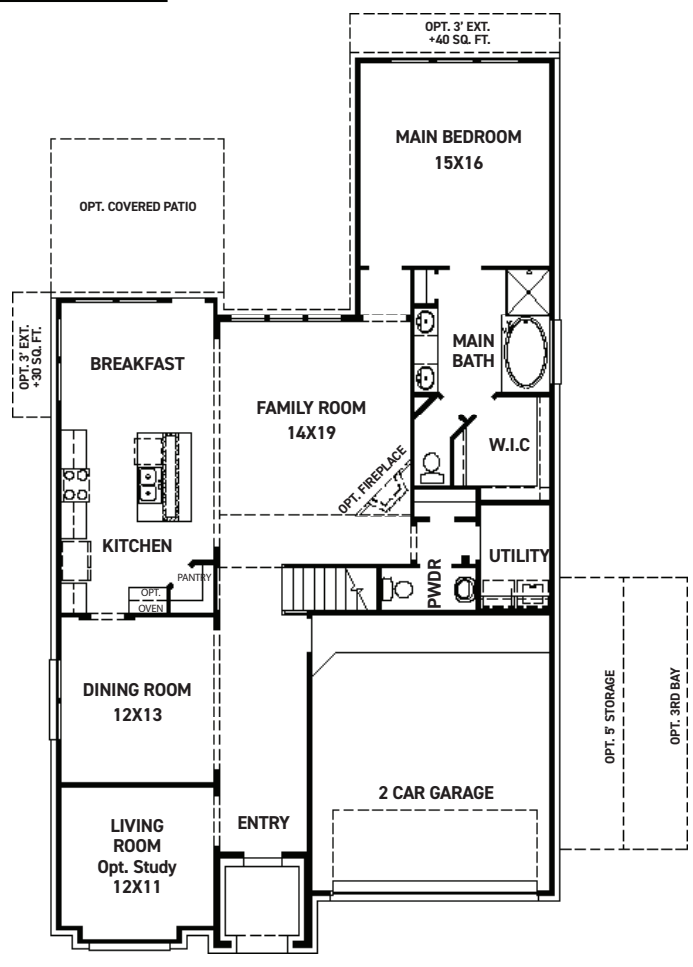
These drawings are conceptual only and are for the convenience of reference. They should not be relied upon as representations, express or implied, of the final detail of the residences. The builder expressly reserves the right to make modifications, revisions, and changes it deems desirable in its sole and absolute discretion. Dimensions and square footages are approximate and may vary with actual construction.



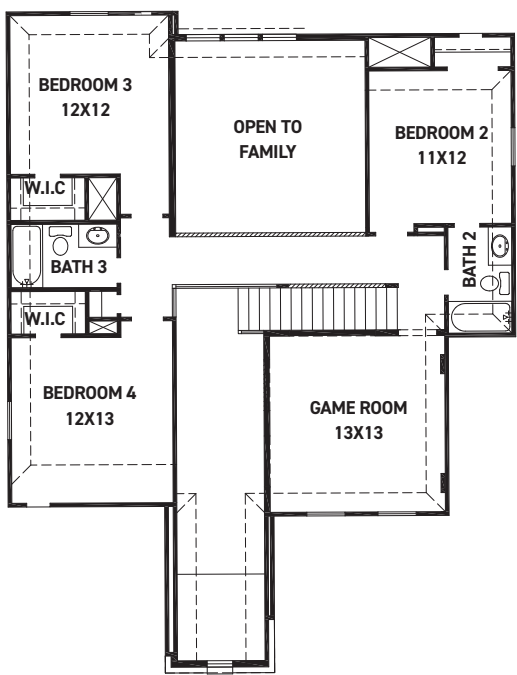
newmarkhomes.com



Heidelberg



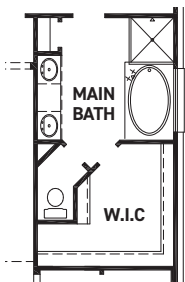
FIRST FLOOR PLAN



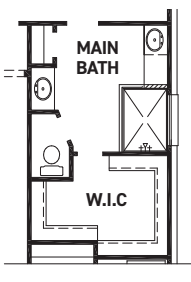
SECOND FLOOR PLAN

FEATURES:

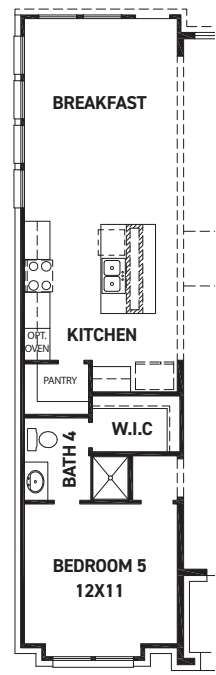
- 2,799 SQUARE FT.
- 4 BEDROOM
- 3 1/2 BATHROOM
- 2 CAR GARAGE



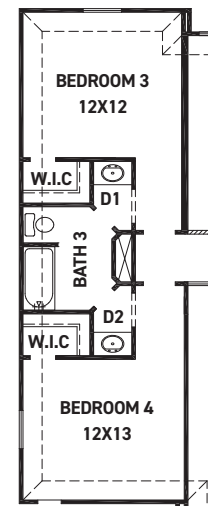
OPT. ENLARGED MAIN CLOSET



OPT. ENLARGED MAIN SHOWER



OPT. BEDROOM 5 W/ BATH 4 & EXTENDED BREAKFAST



OPT. JACK & JILL BATHROOM

REV 10/24 (50



These drawings are conceptual only and are for the convenience of reference. They should not be relied upon as representations, express or implied, of the final detail of the residences. The builder expressly reserves the right to make modifications, revisions, and changes it deems desirable in its sole and absolute discretion. Dimensions and square footages are approximate and may vary with actual construction.



newmarkhomes.com