



5235 Murillo Drive

Iowa Colony, TX 77583 | MLS #16150780
\$381,174

Sq Ft	Beds	Baths	Stories	Garage
1,598	3	2.5	2	2

The Fire wheel Plan Elevation 1 is 3 bedrooms 2 ½ baths all bedrooms up allowing for more entertaining down. Enjoy time on this extended covered back patio and huge primary walk-in closet.

Plan Your Visit

Meridiana 40' Model
Bluebell Plan
Ask Us About Our Up To 20k Flex Allowance!

5311 Majestic Court
Manvel, TX 77578

MODEL HOME HOURS
Monday to Saturday: 10 a.m. - 6 p.m.
Sunday: 12 p.m. - 6 p.m.

Community Sales Manager
Rene Bingle
[512-903-2681](tel:512-903-2681)
rbingle@newmarkhomes.com
Aness Al Dahan
[\(346\) 730-5459](tel:346-730-5459)
aaldahan@newmarkhomes.com



Firewheel



ELEVATION 1



ELEVATION 2



ELEVATION 3

REV 1/22 (401E)

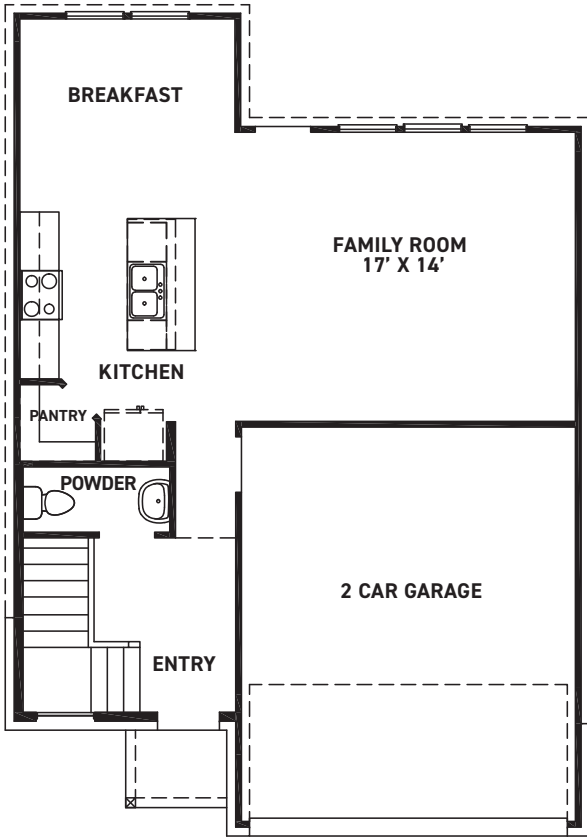


These drawings are conceptual only and are for the convenience of reference. They should not be relied upon as representations, express or implied, of the final detail of the residences. The builder expressly reserves the right to make modifications, revisions, and changes it deems desirable in its sole and absolute discretion. Dimensions and square footages are approximate and may vary with actual construction.

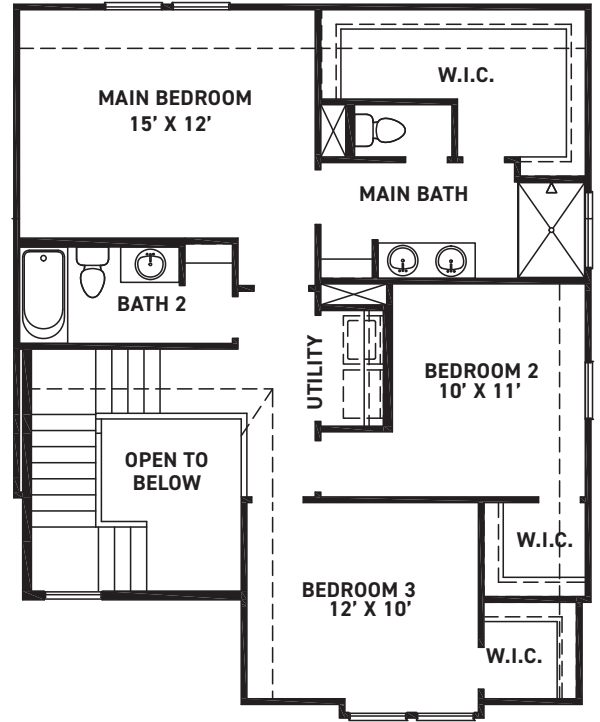


newmarkhomes.com

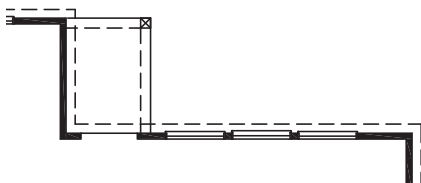
December 03, 2024



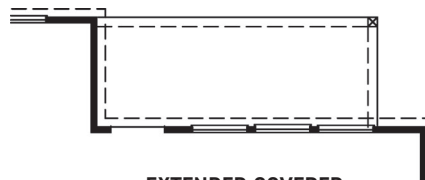
FIRST FLOOR PLAN



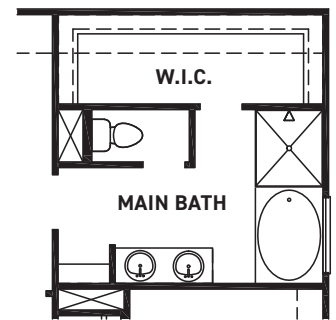
SECOND FLOOR PLAN



COVERED PATIO OPTION



EXTENDED COVERED PATIO OPTION



TUB @ MAIN BATH OPTION

FEATURES:

- 1598 SQUARE FT.
- 3 BEDROOM
- 2-1/2 BATHROOM
- 2 CAR GARAGE

REV 1/22 (401E)



These drawings are conceptual only and are for the convenience of reference. They should not be relied upon as representations, express or implied, of the final detail of the residences. The builder expressly reserves the right to make modifications, revisions, and changes it deems desirable in its sole and absolute discretion. Dimensions and square footages are approximate and may vary with actual construction.



newmarkhomes.com