



# 4406 Driftrose Drive

Fulshear, TX 77441 | MLS #30918148  
\$735,500

Sq Ft	Beds	Baths	Stories	Garage
<b>3,835</b>	<b>5</b>	<b>5.5</b>	<b>2</b>	<b>3</b>

Welcome to this stunning 5-bedroom home with a game room, media, and 3 car tandem garage. As you enter, you'll be greeted by a very open foyer with full view of the family room and the spectacular wall of windows. The main level boasts... [READ MORE »](#)

## Plan Your Visit

Fulbrook on Fulshear Creek 60' Model  
Vicenza Plan  
Ask Us About Our Up To 25k Flex Allowance!

5310 Lakeview Bend  
Fulshear, TX 77441

---

MODEL HOME HOURS  
Monday to Saturday: 10 a.m. - 6 p.m.  
Sunday: 12 p.m. - 6 p.m.

---

Community Sales Manager  
Rhonda Bastine  
[\(713\) 582-0049](tel:(713)582-0049)  
[rbastine@newmarkhomes.com](mailto:rbastine@newmarkhomes.com)  
Ed Vallejo  
[\(713\) 898-6108](tel:(713)898-6108)  
[evallejo@newmarkhomes.com](mailto:evallejo@newmarkhomes.com)

---



**ELEVATION 1**



**ELEVATION 3**



**ELEVATION 5**



**ELEVATION 6**



**ELEVATION 7**



**ELEVATION 8**



**ELEVATION 9**

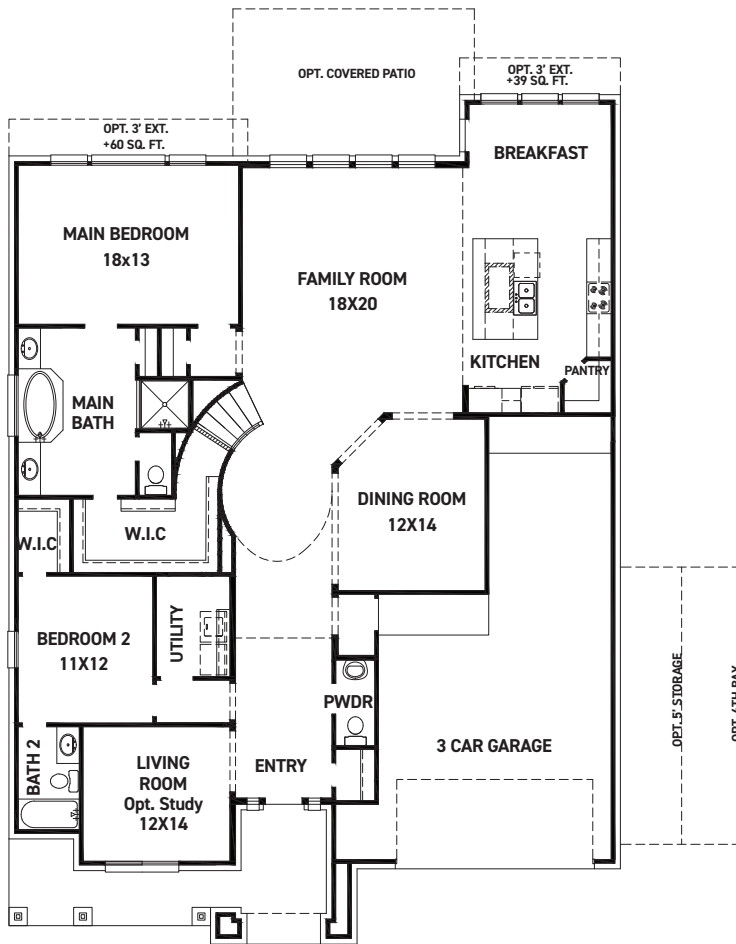
REV 04/24 (6029)



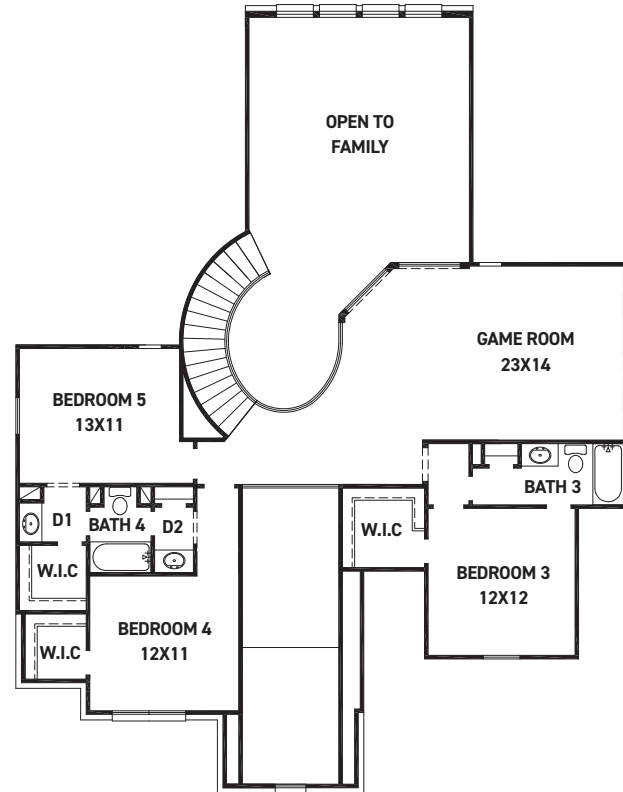
These drawings are conceptual only and are for the convenience of reference. They should not be relied upon as representations, express or implied, of the final detail of the residences. The builder expressly reserves the right to make modifications, revisions, and changes it deems desirable in its sole and absolute discretion. Dimensions and square footages are approximate and may vary with actual construction. Due to design and footage requirements not all options/elevations are available in all locations.



[newmarkhomes.com](http://newmarkhomes.com)



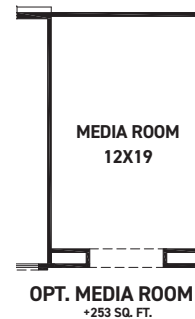
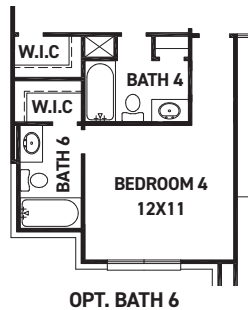
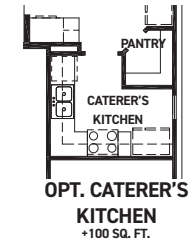
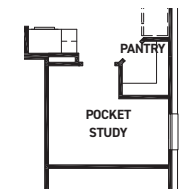
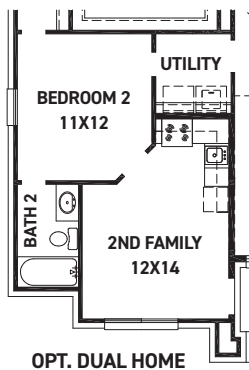
FIRST FLOOR PLAN



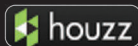
SECOND FLOOR PLAN

### FEATURES:

- 3,532 SQUARE FT.
- 5 BEDROOM
- 4 1/2 BATHROOM
- 3 CAR GARAGE



REV 04/24 (6029)



These drawings are conceptual only and are for the convenience of reference. They should not be relied upon as representations, express or implied, of the final detail of the residences. The builder expressly reserves the right to make modifications, revisions, and changes it deems desirable in its sole and absolute discretion. Dimensions and square footages are approximate and may vary with actual construction. Due to design and footage requirements not all options/elevations are available in all locations.



[newmarkhomes.com](http://newmarkhomes.com)