



Plan Your Visit

30027 Gold Finch Place

Fulshear, TX 77441 | MLS #73226089
\$603,000

| Sq Ft | Beds | Baths | Stories | Garage |
|--------------|----------|------------|----------|----------|
| 3,025 | 4 | 3.5 | 2 | 2 |

Fabulous 2-story plan by Newmark, the Verona, features 4 bedrooms, 3.5 baths and a 2-car garage. An outstanding front elevation greets you as you approach the home. Walk in the 8-foot front door and be amazed by the beautiful 20 ft cei... [READ MORE »](#)



ELEVATION 1



ELEVATION 4



ELEVATION 5



ELEVATION 6



ELEVATION 7



ELEVATION 8

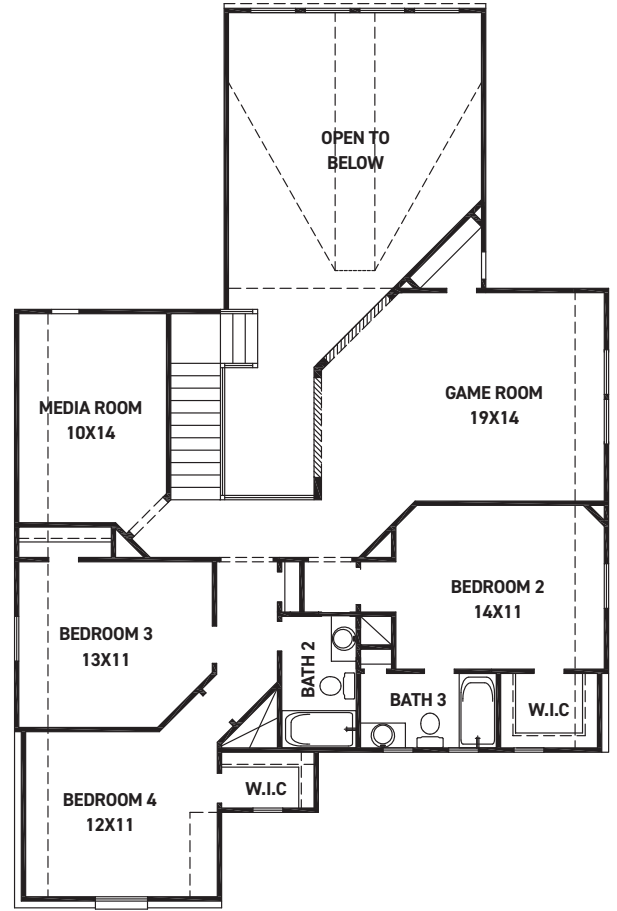
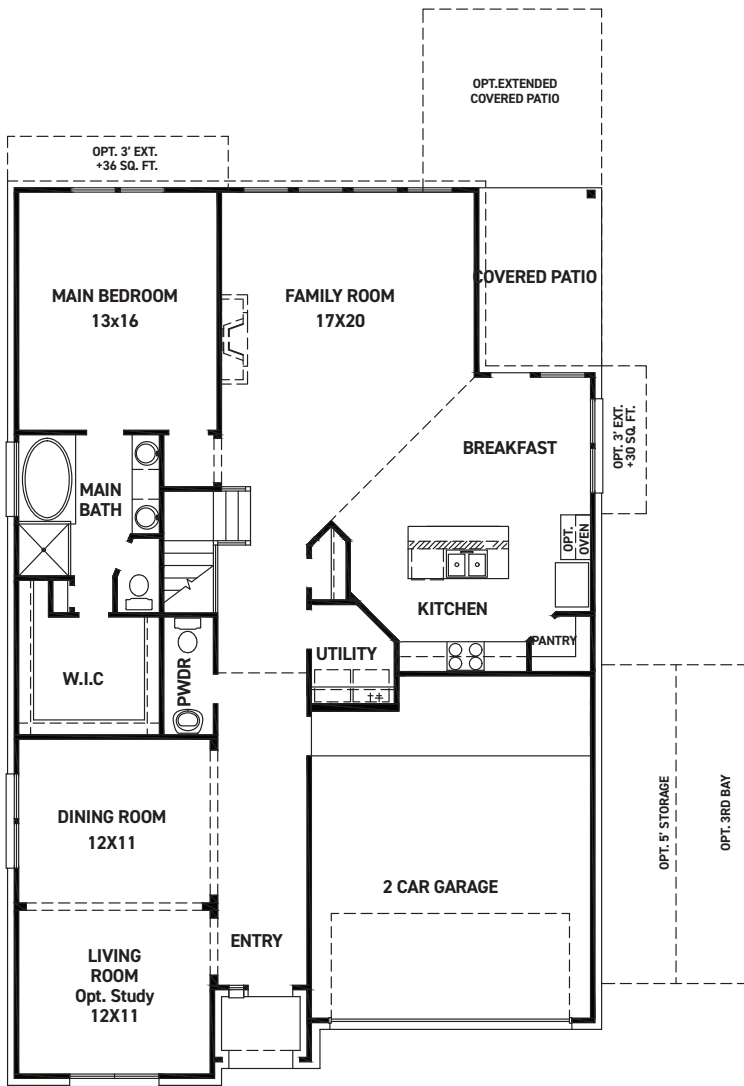
REV 08/24 (5)



These drawings are conceptual only and are for the convenience of reference. They should not be relied upon as representations, express or implied, of the final detail of the residences. The builder expressly reserves the right to make modifications, revisions, and changes it deems desirable in its sole and absolute discretion. Dimensions and square footages are approximate and may vary with actual construction. Due to design and footage requirements not all options/elevations are available in all locations.

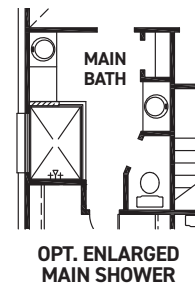
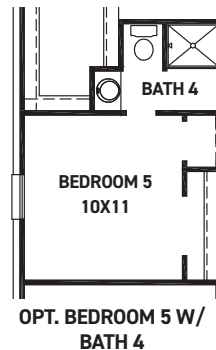
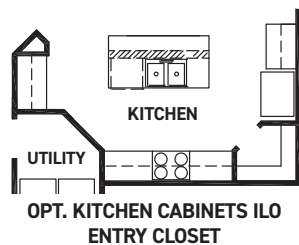


newmarkhomes.com



FEATURES:

- 2,989 SQUARE FT.
- 4 BEDROOM
- 3 1/2 BATHROOM
- 2 CAR GARAGE



REV 08/24(50)



These drawings are conceptual only and are for the convenience of reference. They should not be relied upon as representations, express or implied, of the final detail of the residences. The builder expressly reserves the right to make modifications, revisions, and changes it deems desirable in its sole and absolute discretion. Dimensions and square footages are approximate and may vary with actual construction. Due to design and footage requirements not all options/elevations are available in all locations.



newmarkhomes.com