



13719 Martingale Pointe Dr

Cypress, TX 77433
\$875,000

Sq Ft	Beds	Baths	Stories	Garage
3,768	4	3.5	1	3

Plan Your Visit

Dunham Pointe 70' Model
Monterey Plan
Model Now Open!
20423 Via Casa Laura Drive
Cypress, Texas 77429

MODEL HOME HOURS
Monday to Saturday: 10 a.m. - 6 p.m.
Sunday: 12 p.m. - 6 p.m.

Community Sales Manager
Mimi Ortiz
[\(713\) 269-9433](tel:(713)269-9433)
mortiz@newmarkhomes.com
Celeste Valdez
[832-646-2527](tel:832-646-2527)
cvaldez@newmarkhomes.com



ELEVATION 1



ELEVATION 2



ELEVATION 3



ELEVATION 4



ELEVATION 5



ELEVATION 6

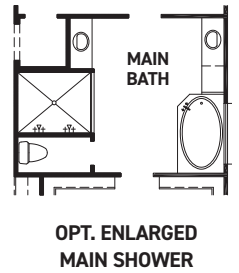
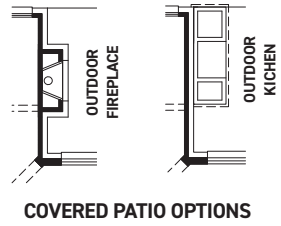
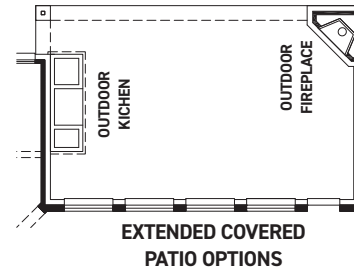
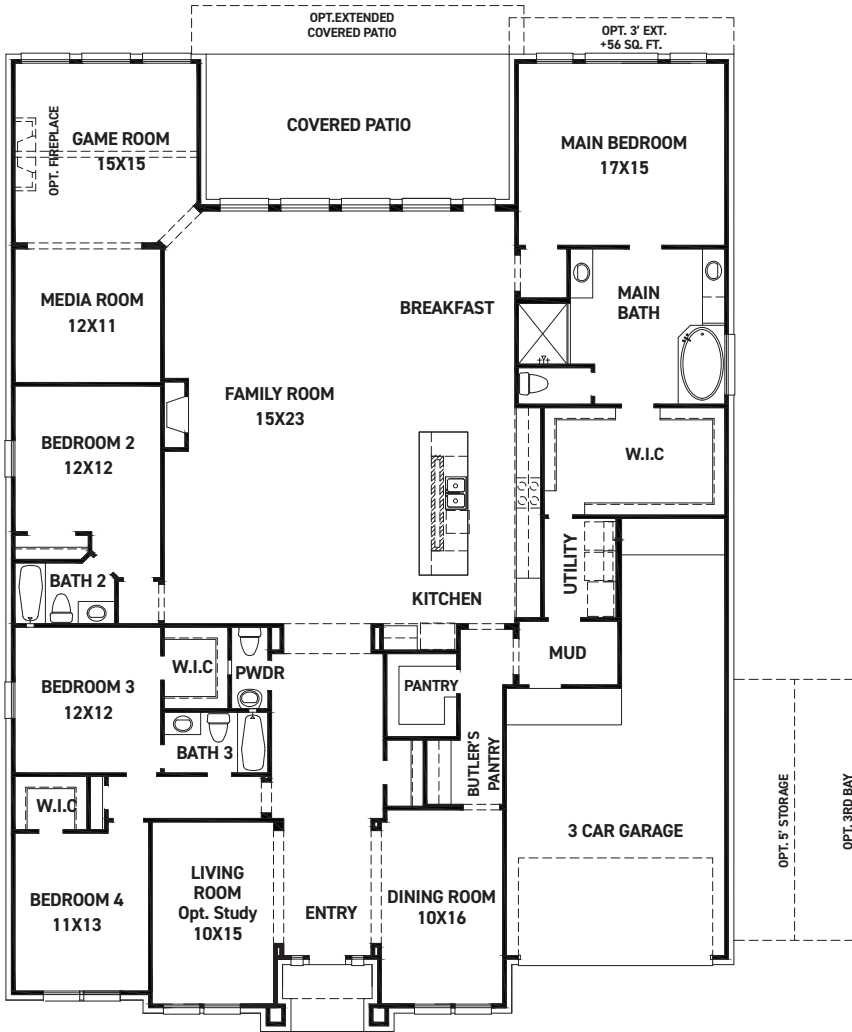
REV 04/24 (7)



These drawings are conceptual only and are for the convenience of reference. They should not be relied upon as representations, express or implied, of the final detail of the residences. The builder expressly reserves the right to make modifications, revisions, and changes it deems desirable in its sole and absolute discretion. Dimensions and square footages are approximate and may vary with actual construction. Due to design and footage requirements not all options/elevations are available in all locations.



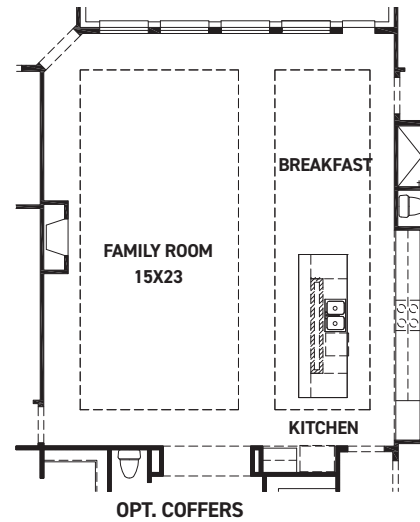
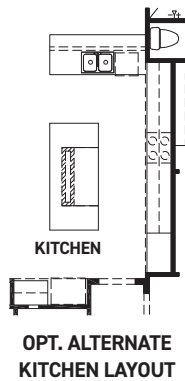
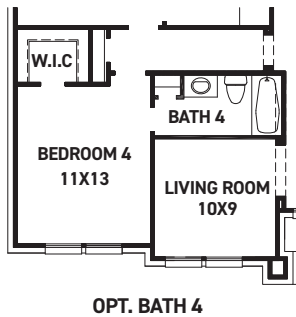
newmarkhomes.com



FIRST FLOOR PLAN

FEATURES:

- 3,768 SQUARE FT.
- 4 BEDROOM
- 3 1/2 BATHROOM
- 3 CAR GARAGE



REV 04/24 (70



These drawings are conceptual only and are for the convenience of reference. They should not be relied upon as representations, express or implied, of the final detail of the residences. The builder expressly reserves the right to make modifications, revisions, and changes it deems desirable in its sole and absolute discretion. Dimensions and square footages are approximate and may vary with actual construction. Due to design and footage requirements not all options/elevations are available in all locations.



newmarkhomes.com