



4502 Woodgate Court

Fulshear, TX 77441 | MLS #38363475
\$714,300

| Sq Ft | Beds | Baths | Stories | Garage |
|--------------|----------|------------|----------|----------|
| 3,713 | 5 | 5.5 | 2 | 3 |

Welcome to this classic SAN GERMAIN by NEWMARK HOMES; A 5-bedroom home with a split 3-car garage, offering both elegance and functionality. As you enter, you'll be greeted by a grand entryway with a winding staircase, setting the tone ... [READ MORE »](#)

Plan Your Visit

Fulbrook on Fulshear Creek 60' Model
Vicenza Plan
Ask Us About Our Up To 25k Flex Allowance!

5310 Lakeview Bend
Fulshear, TX 77441

MODEL HOME HOURS
Monday to Saturday: 10 a.m. - 6 p.m.
Sunday: 12 p.m. - 6 p.m.

Community Sales Manager
Rhonda Bastine
[\(713\) 582-0049](tel:(713)582-0049)
rbastine@newmarkhomes.com
Ed Vallejo
[\(713\) 898-6108](tel:(713)898-6108)
evallejo@newmarkhomes.com



ELEVATION 1



ELEVATION 3



ELEVATION 5



ELEVATION 6



ELEVATION 7



ELEVATION 8



ELEVATION 9

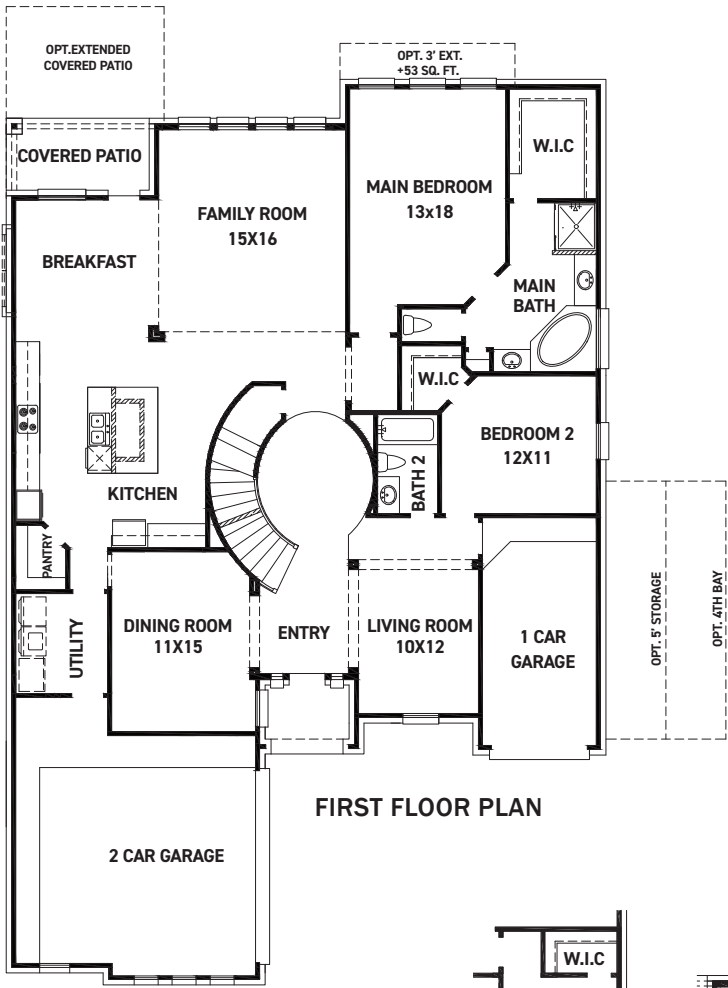
REV 04/24 (6)



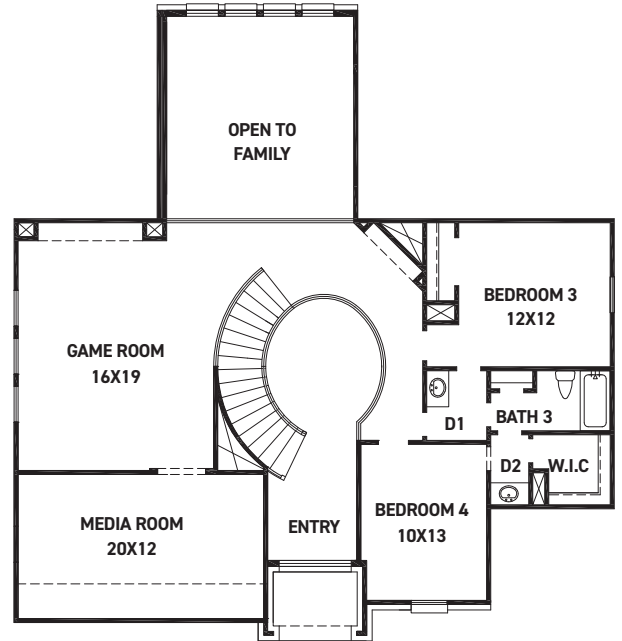
These drawings are conceptual only and are for the convenience of reference. They should not be relied upon as representations, express or implied, of the final detail of the residences. The builder expressly reserves the right to make modifications, revisions, and changes it deems desirable in its sole and absolute discretion. Dimensions and square footages are approximate and may vary with actual construction. Due to design and footage requirements not all options/elevations are available in all locations.



newmarkhomes.com



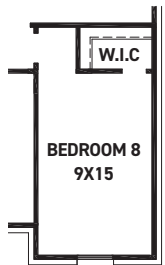
FIRST FLOOR PLAN



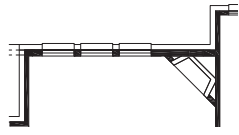
SECOND FLOOR PLAN

FEATURES:

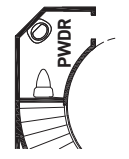
- 3,595 SQUARE FT.
- 4 BEDROOM
- 3 BATHROOM
- 3 CAR GARAGE



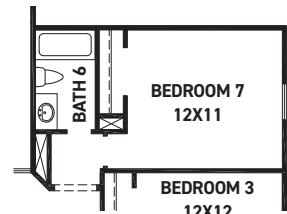
OPT. BEDROOM 8
+208 SQ. FT.



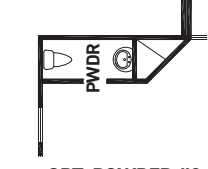
OPT. FIREPLACE



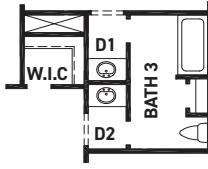
OPT. POWDER



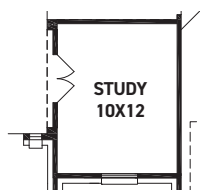
OPT. BEDROOM 7
W/ BATH 6
+263 SQ. FT.



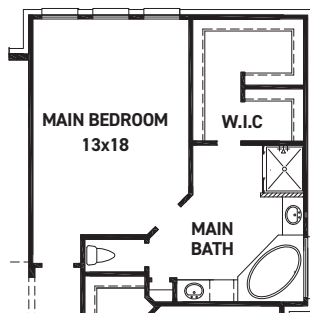
OPT. POWDER #2



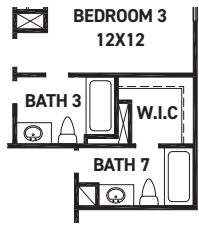
OPT. JACK & JILL
@ BATH 3



OPT. STUDY
@ LIVING



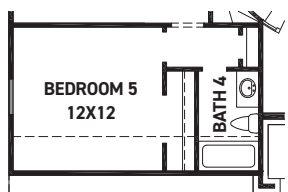
OPT. EXTENDED
MAIN BATH
+56 SQ. FT.



OPT. BATH 7



OPT. BEDROOM 6
W/ BATH 5
+270 SQ. FT.



OPT. BEDROOM 5
W/ BATH 4 ILO MEDIA

REV 04/24 (6)



These drawings are conceptual only and are for the convenience of reference. They should not be relied upon as representations, express or implied, of the final detail of the residences. The builder expressly reserves the right to make modifications, revisions, and changes it deems desirable in its sole and absolute discretion. Dimensions and square footages are approximate and may vary with actual construction. Due to design and footage requirements not all options/elevations are available in all locations.



newmarkhomes.com