



1206 Watermont Drive

Missouri City, TX 77459 | MLS #62591622
\$533,927

Sq Ft	Beds	Baths	Stories	Garage
2,228	4	3	2	2

Welcome to Newmark Homes Portrait Series in Sienna's new section in Crescent Spring The KENDALL Plan- Elev A- 4 bedroom (w/ 2 down) 3 full baths, 2 story family room, game room, media ,study nook up. Large island kitchen and breakfast... [READ MORE »](#)

Plan Your Visit

Sienna 45' Model
Duval Plan
2022 Ironwood Pass Drive
Missouri City, TX 77459

MODEL HOME HOURS
Monday to Saturday: 10 a.m. - 6 p.m.
Sunday: 12 p.m. - 6 p.m.

Community Sales Manager
Sharon Yu

(832) 818-4663
syu@newmarkhomes.com

Dora Mar
(832) 878-3672
dmar@newmarkhomes.com



ELEVATION A



ELEVATION B



ELEVATION C



ELEVATION D



ELEVATION E

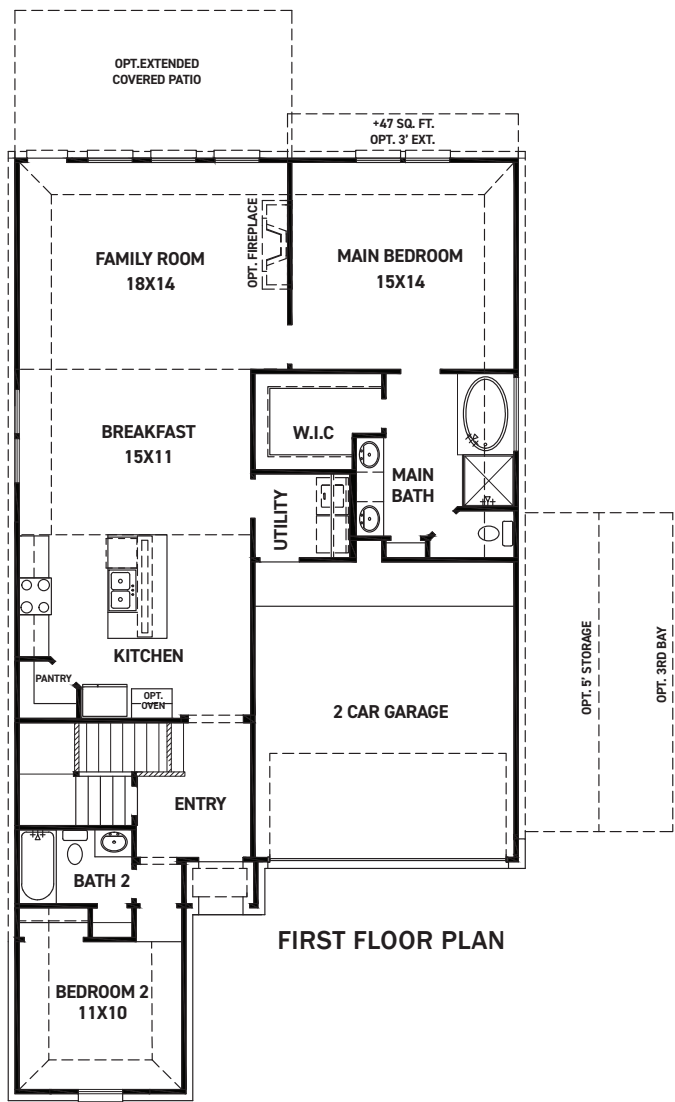
REV 04/24 (453K)



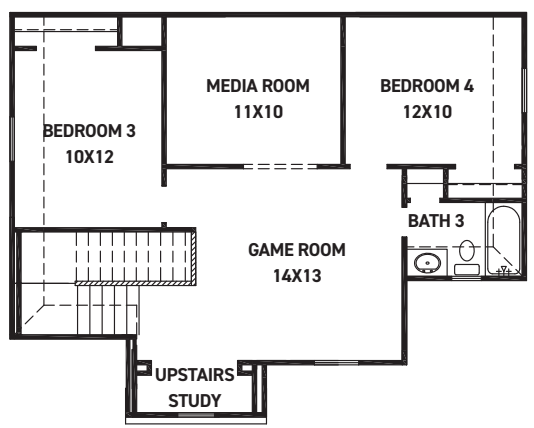
These drawings are conceptual only and are for the convenience of reference. They should not be relied upon as representations, express or implied, of the final detail of the residences. The builder expressly reserves the right to make modifications, revisions, and changes it deems desirable in its sole and absolute discretion. Dimensions and square footages are approximate and may vary with actual construction. Due to design and footage requirements not all options/elevations are available in all locations.



newmarkhomes.com

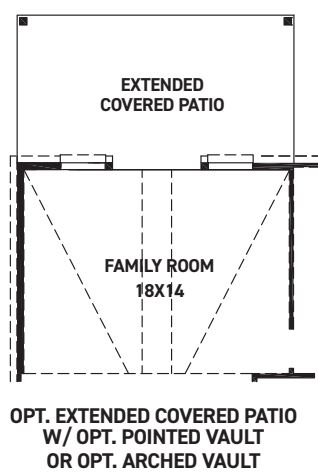
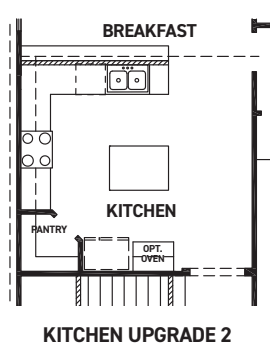
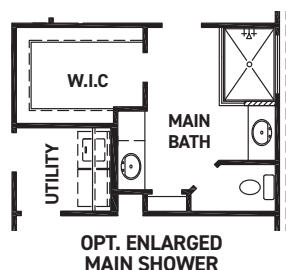


FIRST FLOOR PLAN



SECOND FLOOR PLAN

- FEATURES:**
- 2,228 SQUARE FT.
 - 4 BEDROOM
 - 3 BATHROOM
 - 2 CAR GARAGE



REV 04/24 (453K)



These drawings are conceptual only and are for the convenience of reference. They should not be relied upon as representations, express or implied, of the final detail of the residences. The builder expressly reserves the right to make modifications, revisions, and changes it deems desirable in its sole and absolute discretion. Dimensions and square footages are approximate and may vary with actual construction. Due to design and footage requirements not all options/elevations are available in all locations.



newmarkhomes.com