



# 24703 Celestial Lily Drive

Katy, TX 77493 | MLS #32819540  
\$943,227

Sq Ft	Beds	Baths	Stories	Garage
<b>4,354</b>	<b>5</b>	<b>5.5</b>	<b>2</b>	<b>3</b>

The MONTEREY by NEWMARK HOMES can't be fully appreciated without experiencing it yourself. The traditional elevation complete with front porch and impressive painted brick beckons you inside. The bright, airy entry with a generous stud... [READ MORE »](#)

## Plan Your Visit

Elyson 70' Model  
Cologne Plan  
Model Now Open!  
7307 Prairie Lakeshore Lane  
Katy, TX 77493

---

Community Sales Manager  
Stephen Bigelow  
(832) 671-8404  
[sbigelow@newmarkhomes.com](mailto:sbigelow@newmarkhomes.com)

---



**ELEVATION 1**



**ELEVATION 2**



**ELEVATION 3**



**ELEVATION 4**



**ELEVATION 5**

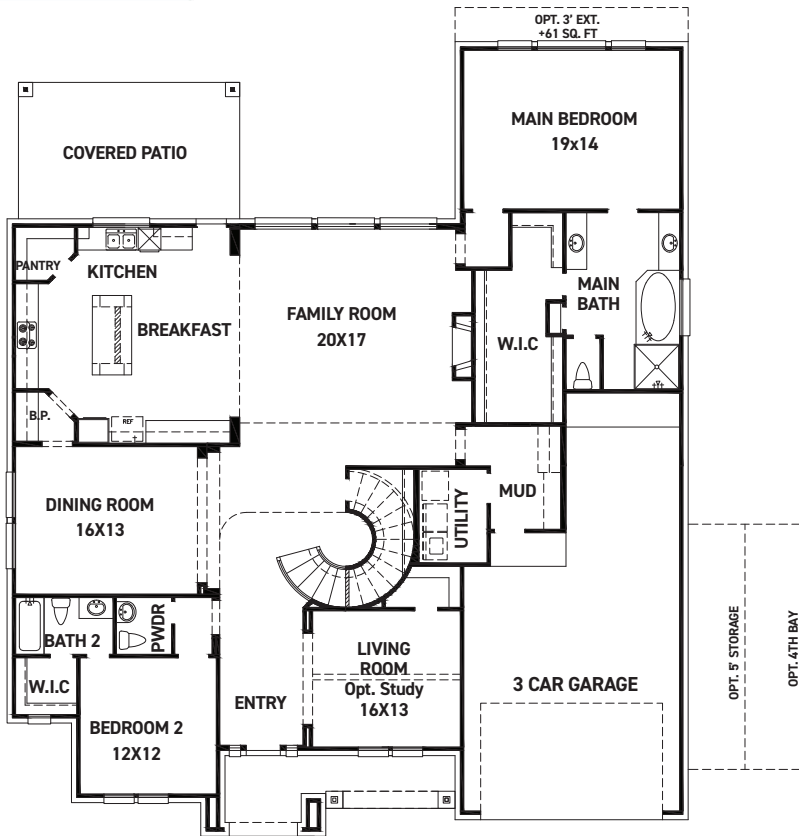
REV 06/24 (7022)



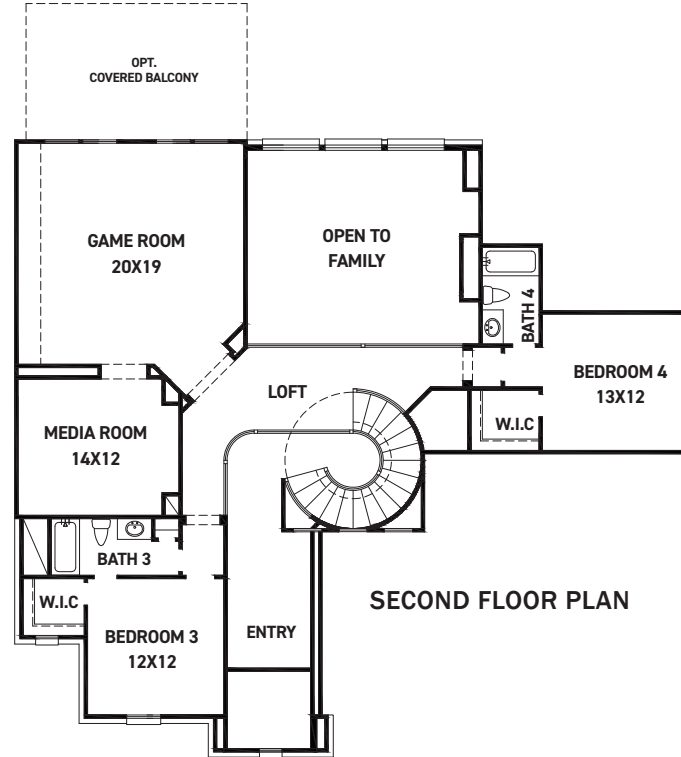
These drawings are conceptual only and are for the convenience of reference. They should not be relied upon as representations, express or implied, of the final detail of the residences. The builder expressly reserves the right to make modifications, revisions, and changes it deems desirable in its sole and absolute discretion. Dimensions and square footages are approximate and may vary with actual construction. Due to design and footage requirements not all options/elevations are available in all locations.



[newmarkhomes.com](http://newmarkhomes.com)



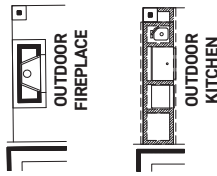
FIRST FLOOR PLAN



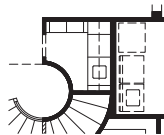
SECOND FLOOR PLAN

**FEATURES:**

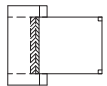
- 4,046 SQUARE FT.
- 4 BEDROOM
- 4 1/2 BATHROOM
- 3 CAR GARAGE



COVERED PATIO OPTIONS



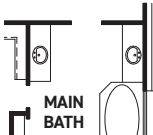
OPT. WINE GROTTO



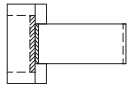
OPT. TABLE LEGS END



OPT. CORNER FIREPLACE



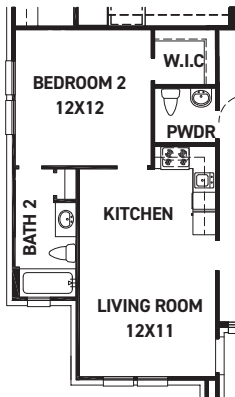
OPT. ENLARGED MAIN SHOWER



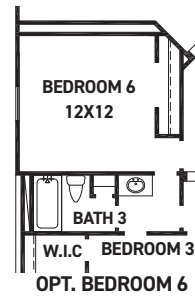
OPT. WATERFALL EDGE END



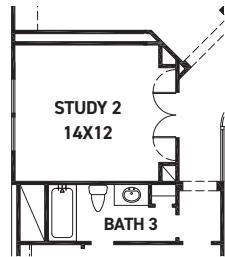
OPT. SECOND FLOOR W/CORNER FIREPLACE



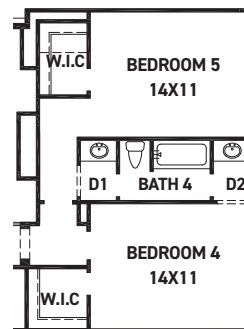
OPT. DUAL HOME



OPT. BEDROOM 6



OPT. STUDY 2



OPT. BEDROOM 5 +268 SQ. FT.



OPT. BEDROOM 5 W/ BATH 5 +268 SQ. FT.



These drawings are conceptual only and are for the convenience of reference. They should not be relied upon as representations, express or implied, of the final detail of the residences. The builder expressly reserves the right to make modifications, revisions, and changes it deems desirable in its sole and absolute discretion. Dimensions and square footages are approximate and may vary with actual construction. Due to design and footage requirements not all options/elevations are available in all locations.



[newmarkhomes.com](http://newmarkhomes.com)