



29818 Aaron River Trail

Fulshear, TX 77441

\$949,000

Sq Ft	Beds	Baths	Stories	Garage
3,768	4	3.5	1	3

Plan Your Visit

Cross Creek Ranch 70' Model

Amalfi Plan

Model Now Open

29818 Aaron River Trail

Fulshear, TX 77441

MODEL HOME HOURS

Monday to Saturday: 10 a.m. - 6 p.m.

Sunday: 12 p.m. - 6 p.m.

Community Sales Manager

Merri Turco

(281) 413-0216

mturco@newmarkhomes.com



ELEVATION 1



ELEVATION 2



ELEVATION 3



ELEVATION 4



ELEVATION 5



ELEVATION 6

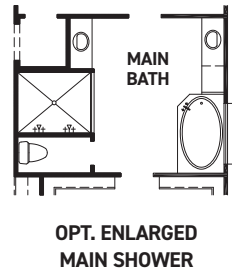
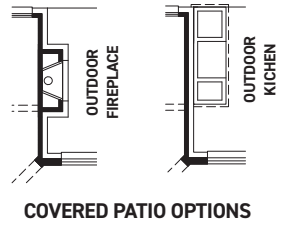
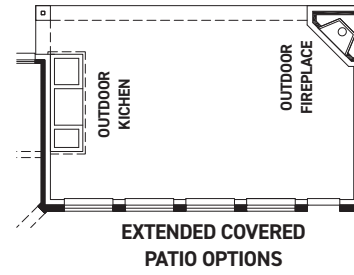
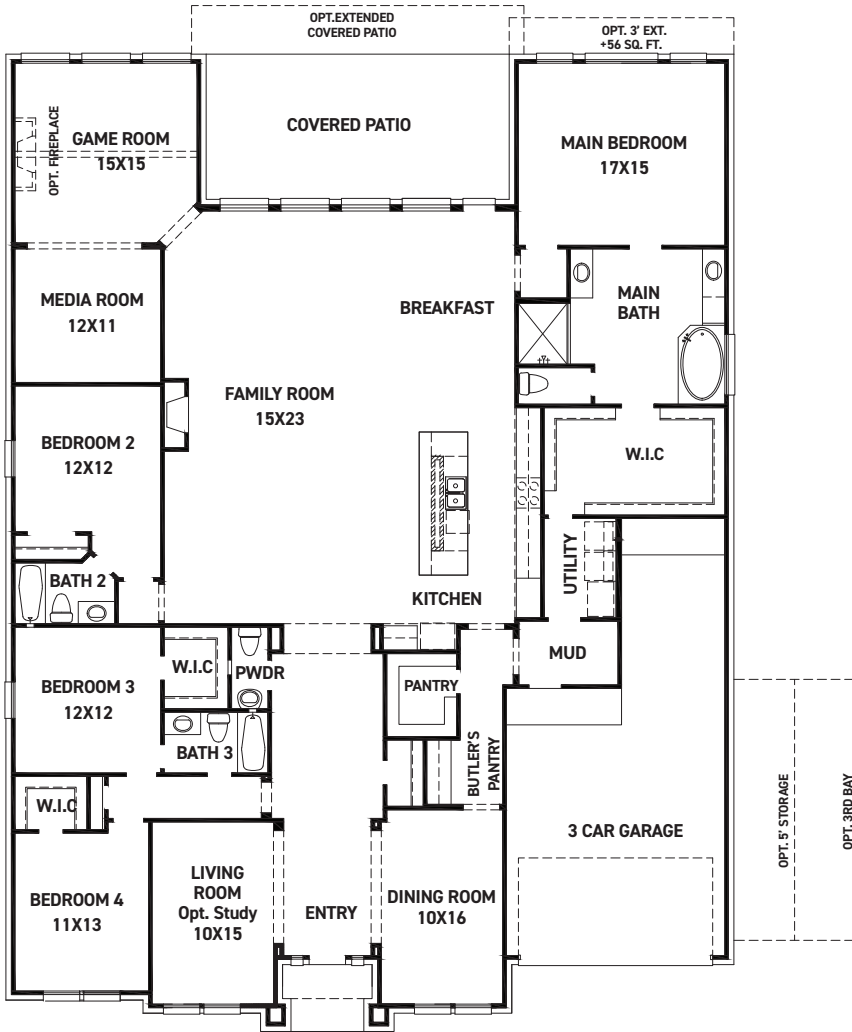
REV 04/24 (7)



These drawings are conceptual only and are for the convenience of reference. They should not be relied upon as representations, express or implied, of the final detail of the residences. The builder expressly reserves the right to make modifications, revisions, and changes it deems desirable in its sole and absolute discretion. Dimensions and square footages are approximate and may vary with actual construction. Due to design and footage requirements not all options/elevations are available in all locations.



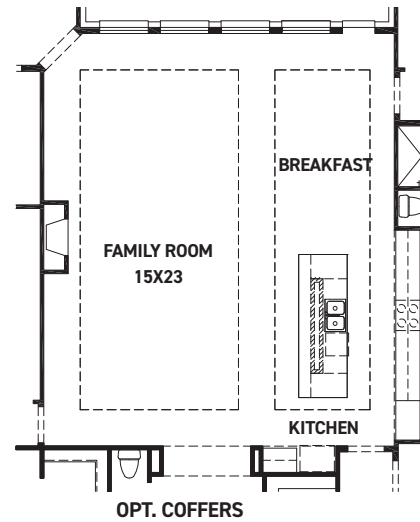
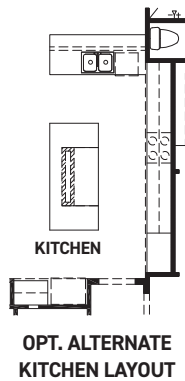
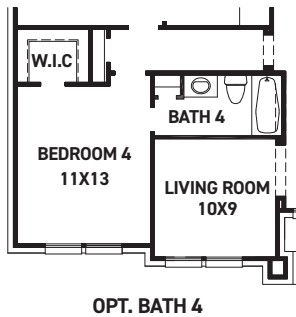
newmarkhomes.com



FIRST FLOOR PLAN

FEATURES:

- 3,768 SQUARE FT.
- 4 BEDROOM
- 3 1/2 BATHROOM
- 3 CAR GARAGE



REV 04/24 (70



These drawings are conceptual only and are for the convenience of reference. They should not be relied upon as representations, express or implied, of the final detail of the residences. The builder expressly reserves the right to make modifications, revisions, and changes it deems desirable in its sole and absolute discretion. Dimensions and square footages are approximate and may vary with actual construction. Due to design and footage requirements not all options/elevations are available in all locations.



newmarkhomes.com