



# 7911 Wild Iris Way

Katy, TX 77493  
\$583,283

Sq Ft	Beds	Baths	Stories	Garage
<b>2,617</b>	<b>4</b>	<b>3</b>	<b>2</b>	<b>2</b>

## Plan Your Visit

Elyson 45' Model  
Donley Plan  
Ask Us About Our Up To 25k Flex  
Allowance!

Hablo español  
7326 Prairie Lakeshore Lane  
Katy, TX 77493

---

Community Sales Manager  
Isabel Rodriguez  
[832-929-8907](tel:832-929-8907)  
[Irodriguez@newmarkhomes.com](mailto:Irodriguez@newmarkhomes.com)  
Karen Schewe  
[\(713\) 502-8465](tel:(713)502-8465)  
[kschewe@newmarkhomes.com](mailto:kschewe@newmarkhomes.com)

---



**ELEVATION A**



**ELEVATION B**



**ELEVATION C**



**ELEVATION D**



**ELEVATION E**



**ELEVATION F**

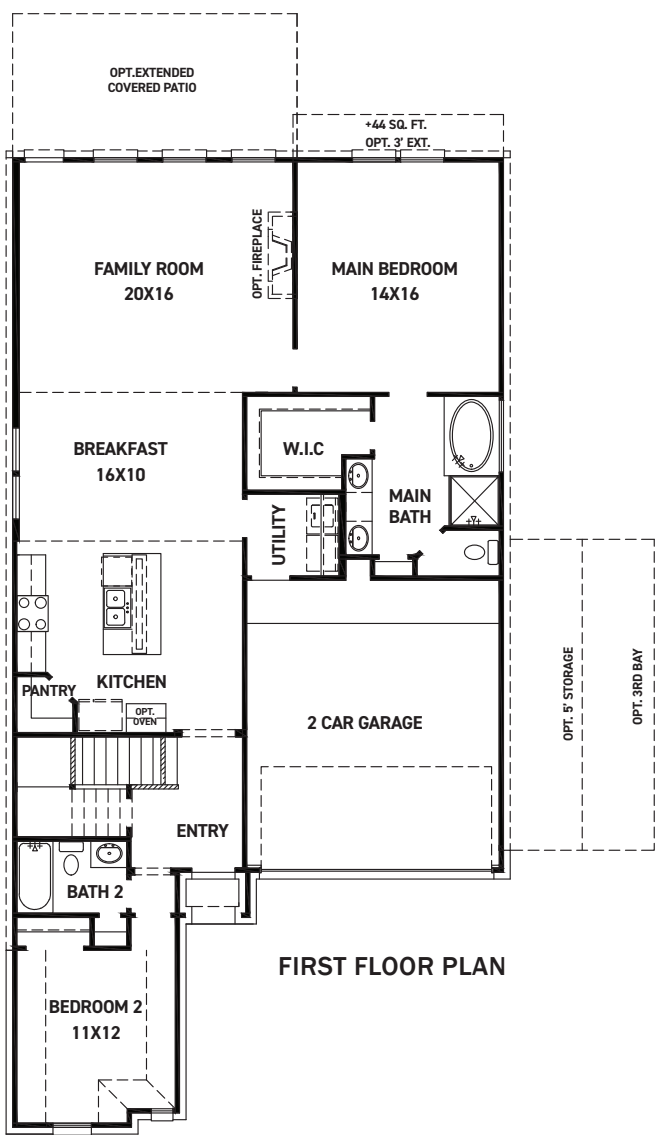
REV 04/24 (452)



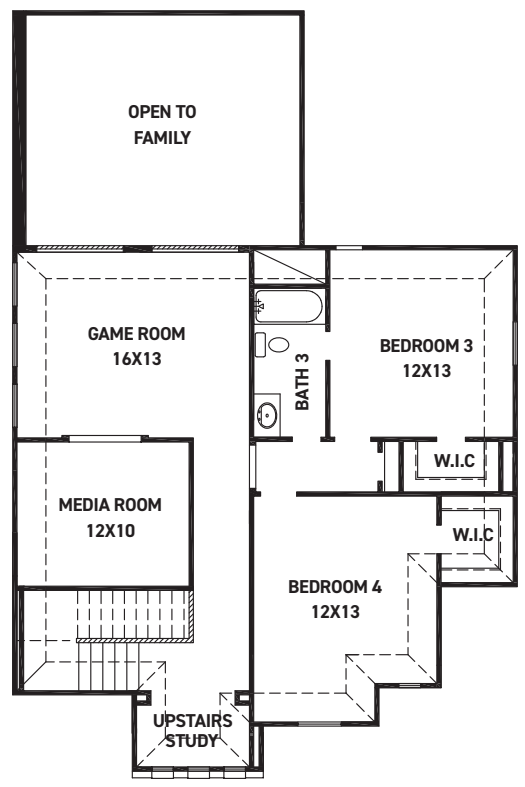
These drawings are conceptual only and are for the convenience of reference. They should not be relied upon as representations, express or implied, of the final detail of the residences. The builder expressly reserves the right to make modifications, revisions, and changes it deems desirable in its sole and absolute discretion. Dimensions and square footages are approximate and may vary with actual construction. Due to design and footage requirements not all options/elevations are available in all locations.



[newmarkhomes.com](http://newmarkhomes.com)



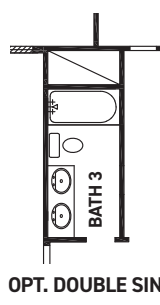
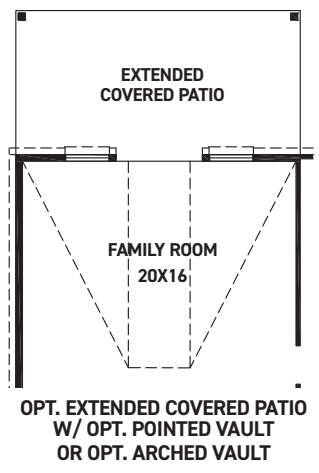
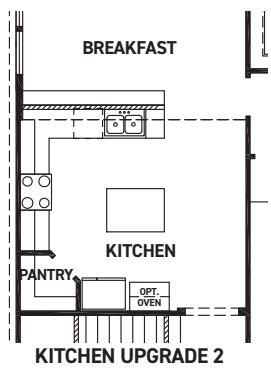
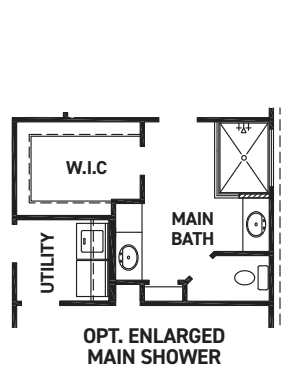
FIRST FLOOR PLAN



SECOND FLOOR PLAN

### FEATURES:

- 2,617 SQUARE FT.
- 4 BEDROOM
- 3 BATHROOM
- 2 CAR GARAGE



REV 04/24 (4520)



These drawings are conceptual only and are for the convenience of reference. They should not be relied upon as representations, express or implied, of the final detail of the residences. The builder expressly reserves the right to make modifications, revisions, and changes it deems desirable in its sole and absolute discretion. Dimensions and square footages are approximate and may vary with actual construction. Due to design and footage requirements not all options/elevations are available in all locations.



[newmarkhomes.com](http://newmarkhomes.com)