



4411 Heather Crossing Rd

Fulshear, TX 77441

\$660,400

Sq Ft	Beds	Baths	Stories	Garage
3,017	4	3	1	3

Plan Your Visit

Fulbrook on Fulshear Creek 60' Model
Vicenza Plan
Ask Us About Our Up To 25k Flex Allowance!

5310 Lakeview Bend
Fulshear, TX 77441

MODEL HOME HOURS

Monday to Saturday: 10 a.m. - 6 p.m.

Sunday: 12 p.m. - 6 p.m.

Community Sales Manager

Rhonda Bastine

(713) 582-0049

rbastine@newmarkhomes.com

Ed Vallejo

(713) 898-6108

evallejo@newmarkhomes.com



ELEVATION 1



ELEVATION 2



ELEVATION 3



ELEVATION 4



ELEVATION 5



ELEVATION 6

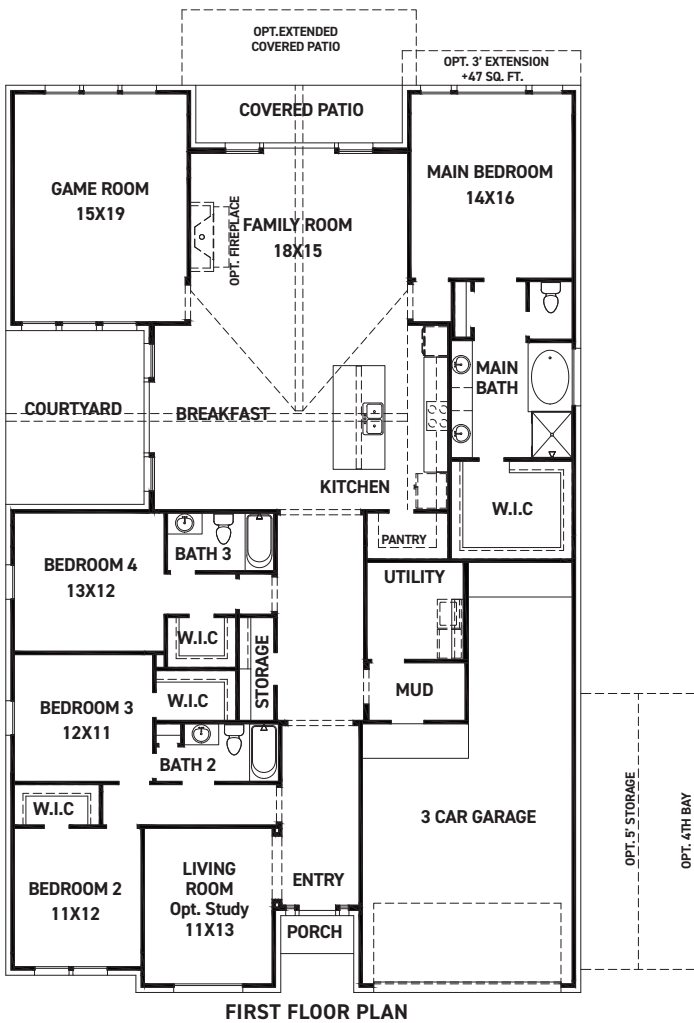
REV 05/24 (6)



These drawings are conceptual only and are for the convenience of reference. They should not be relied upon as representations, express or implied, of the final detail of the residences. The builder expressly reserves the right to make modifications, revisions, and changes it deems desirable in its sole and absolute discretion. Dimensions and square footages are approximate and may vary with actual construction. Due to design and footage requirements not all options/elevations are available in all locations.

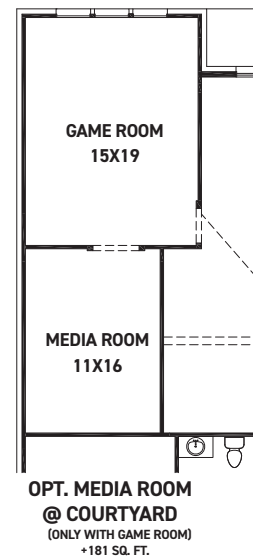
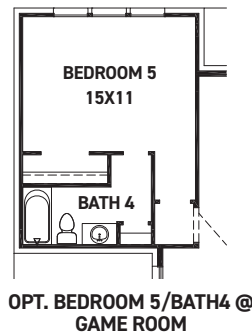
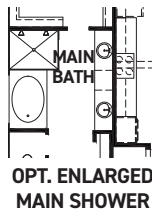
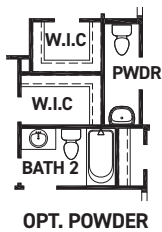


newmarkhomes.com



FEATURES:

- 3017 SQUARE FT.
- 4 BEDROOM
- 3 BATHROOM
- 3 CAR GARAGE



REV 05/24(60)



These drawings are conceptual only and are for the convenience of reference. They should not be relied upon as representations, express or implied, of the final detail of the residences. The builder expressly reserves the right to make modifications, revisions, and changes it deems desirable in its sole and absolute discretion. Dimensions and square footages are approximate and may vary with actual construction. Due to design and footage requirements not all options/elevations are available in all locations.



newmarkhomes.com