



# 1439 Watermont Drive

Missouri City, TX 77459 | MLS #69105763  
\$658,980

Sq Ft	Beds	Baths	Stories	Garage
<b>2,987</b>	<b>4</b>	<b>3.5</b>	<b>2</b>	<b>3</b>

BRAND NEW NEWMARK HOME in Sienna! The KOBLENZ is our model floor plan and defines open-concept living. Modern elevation with stunning stucco and brick. Soaring ceilings in family room with lots of natural light. Open island kitchen wit... [READ MORE »](#)

## Plan Your Visit

Sienna 50' Model  
Koblenz Plan  
2006 Ironwood Pass Drive  
Missouri City, TX 77459

---

MODEL HOME HOURS  
Monday to Saturday: 10 a.m. - 6 p.m.  
Sunday: 12 p.m. - 6 p.m.

---

Community Sales Manager  
Sharon Yu  
[\(832\) 818-4663](tel:(832)818-4663)  
[syu@newmarkhomes.com](mailto:syu@newmarkhomes.com)  
Dora Mar  
[\(832\) 878-3672](tel:(832)878-3672)  
[dmar@newmarkhomes.com](mailto:dmar@newmarkhomes.com)

---



**ELEVATION 1**



**ELEVATION 2**



**ELEVATION 3**



**ELEVATION 4**



**ELEVATION 12**



**ELEVATION 13**



**ELEVATION 14**



**ELEVATION 15**

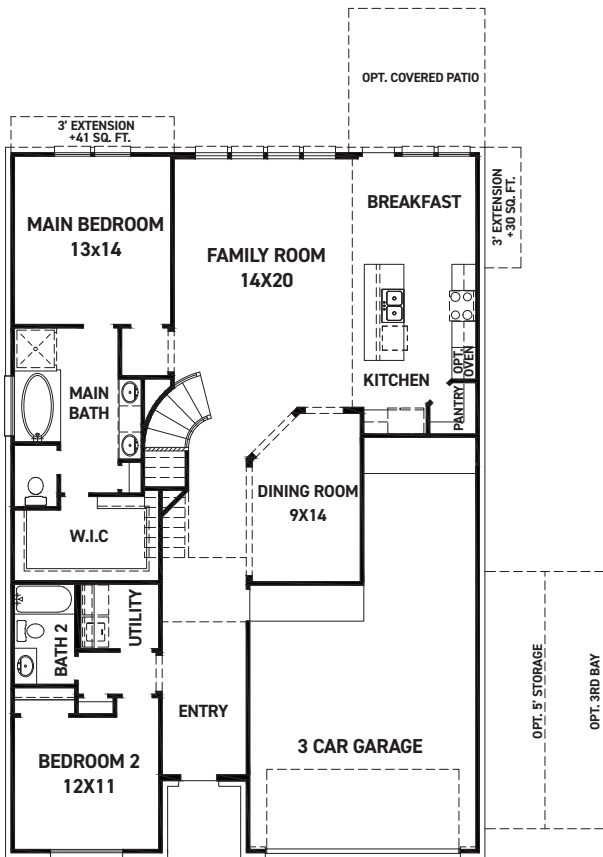
REV 06/24 (5)



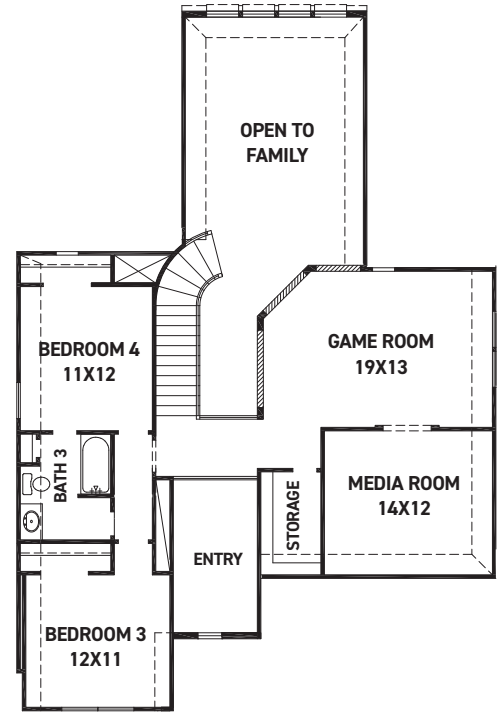
These drawings are conceptual only and are for the convenience of reference. They should not be relied upon as representations, express or implied, of the final detail of the residences. The builder expressly reserves the right to make modifications, revisions, and changes it deems desirable in its sole and absolute discretion. Dimensions and square footages are approximate and may vary with actual construction. Due to design and footage requirements not all options/elevations are available in all locations.



[newmarkhomes.com](http://newmarkhomes.com)



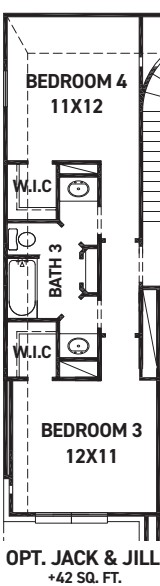
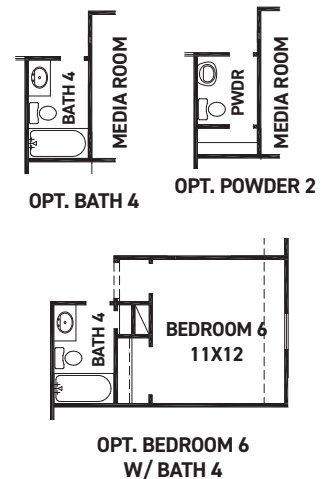
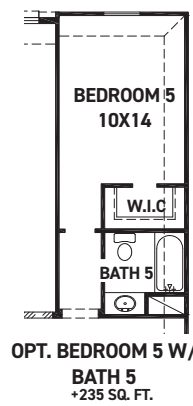
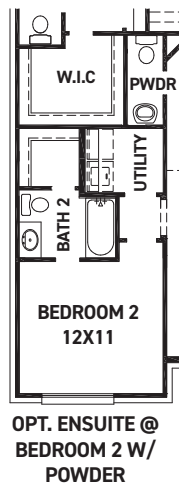
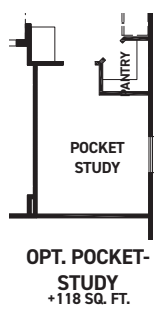
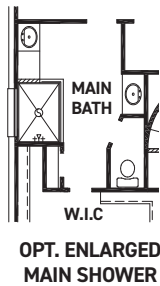
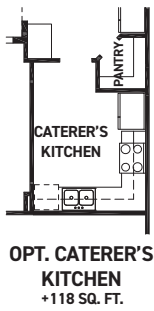
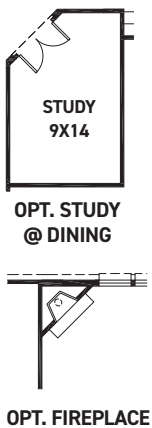
FIRST FLOOR PLAN



SECOND FLOOR PLAN

## FEATURES:

- 2,762 SQUARE FT.
- 4 BEDROOM
- 3 BATHROOM
- 3 CAR GARAGE



REV 06/24 (5016)



These drawings are conceptual only and are for the convenience of reference. They should not be relied upon as representations, express or implied, of the final detail of the residences. The builder expressly reserves the right to make modifications, revisions, and changes it deems desirable in its sole and absolute discretion. Dimensions and square footages are approximate and may vary with actual construction. Due to design and footage requirements not all options/elevations are available in all locations.



[newmarkhomes.com](http://newmarkhomes.com)