



1118 Watermont Drive

Missouri City, TX 77459 | MLS #44361439
\$551,833

Sq Ft	Beds	Baths	Stories	Garage
2,459	5	4	2	2

Newmark's Maverick plan in Sienna- Amazing 2 story 5 Bed (2 down) and 4 Full baths, Study room, Game room. Popular open concept with ideal living space and dramatic architectural design. Plenty of natural light with soaring pointed va... [READ MORE »](#)

Plan Your Visit

Sienna 45' Model
Duval Plan
2022 Ironwood Pass Drive
Missouri City, TX 77459

MODEL HOME HOURS
Monday to Saturday: 10 a.m. - 6 p.m.
Sunday: 12 p.m. - 6 p.m.

Community Sales Manager

Dora Mar

(832) 878-3672

dmar@newmarkhomes.com

Sharon Yu

(832) 818-4663

syu@newmarkhomes.com



Maverick



ELEVATION A



ELEVATION B



ELEVATION C



ELEVATION D



ELEVATION E

REV 04/24 (452M)



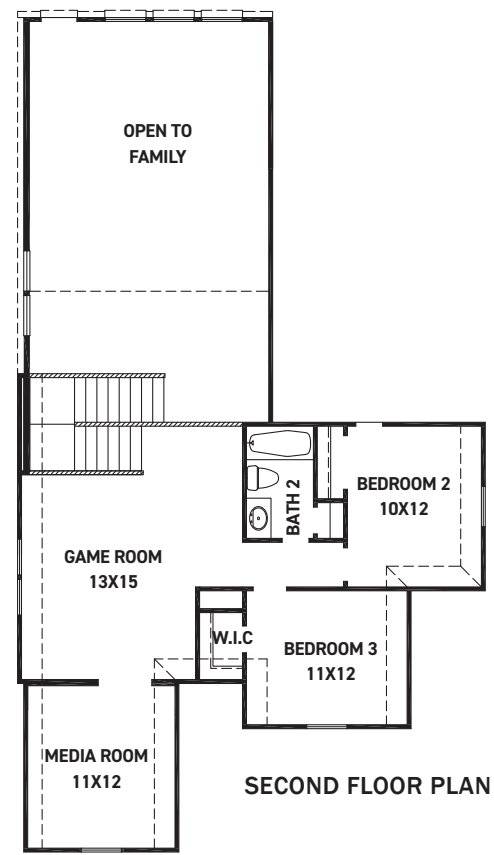
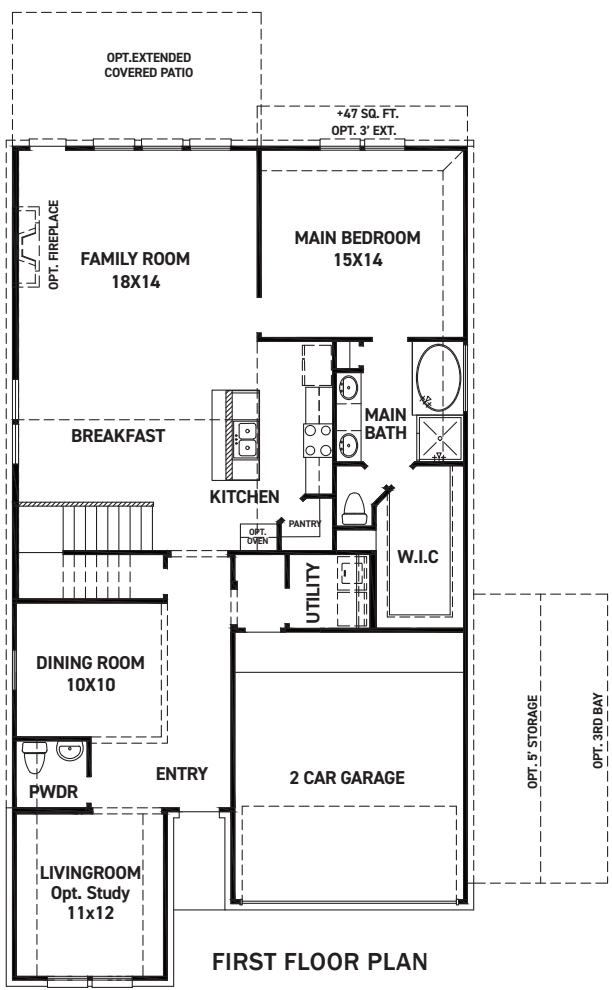
These drawings are conceptual only and are for the convenience of reference. They should not be relied upon as representations, express or implied, of the final detail of the residences. The builder expressly reserves the right to make modifications, revisions, and changes it deems desirable in its sole and absolute discretion. Dimensions and square footages are approximate and may vary with actual construction. Due to design and footage requirements not all options/elevations are available in all locations.



newmarkhomes.com

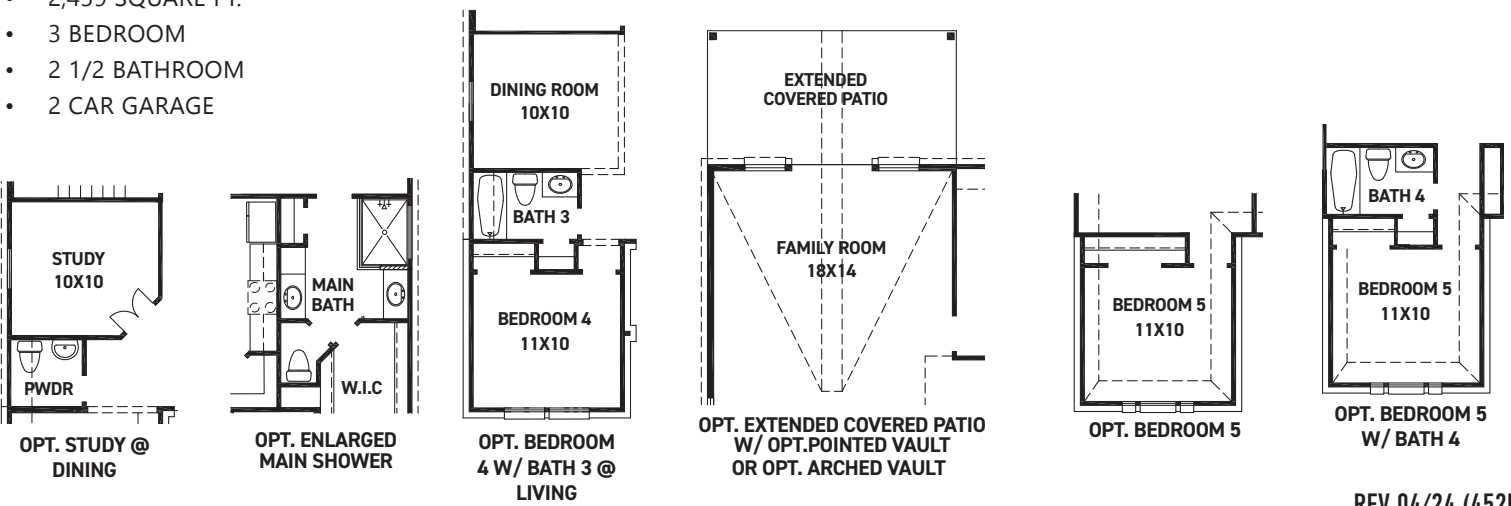


Maverick



FEATURES:

- 2,459 SQUARE FT.
- 3 BEDROOM
- 2 1/2 BATHROOM
- 2 CAR GARAGE



REV 04/24 (452M)



These drawings are conceptual only and are for the convenience of reference. They should not be relied upon as representations, express or implied, of the final detail of the residences. The builder expressly reserves the right to make modifications, revisions, and changes it deems desirable in its sole and absolute discretion. Dimensions and square footages are approximate and may vary with actual construction. Due to design and footage requirements not all options/elevations are available in all locations.



newmarkhomes.com