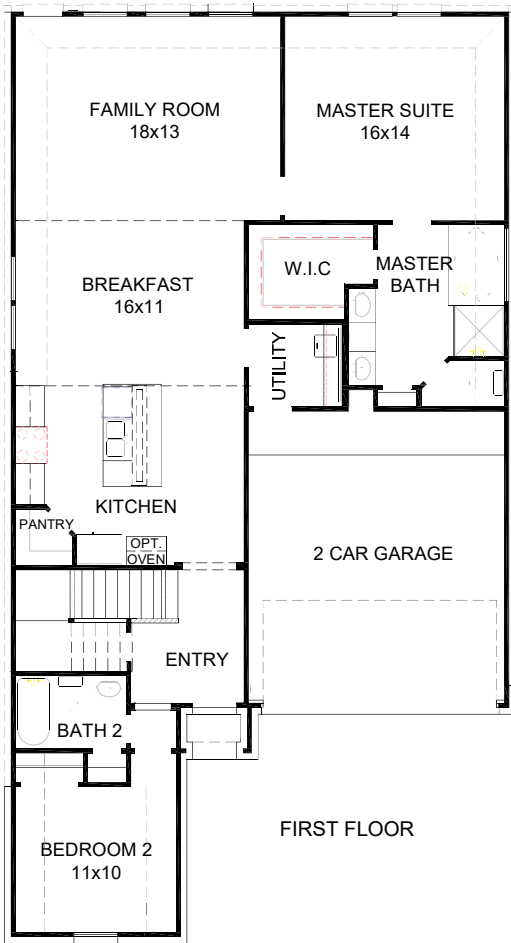
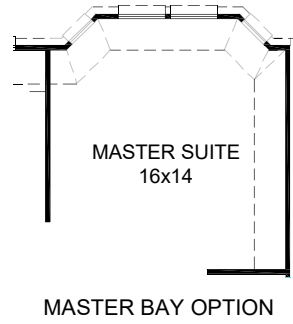


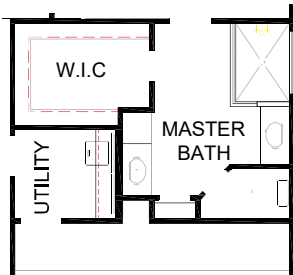
KIMBLE



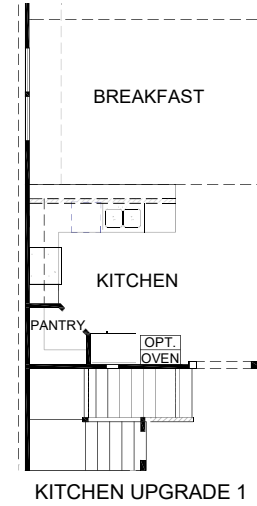
FIRST FLOOR



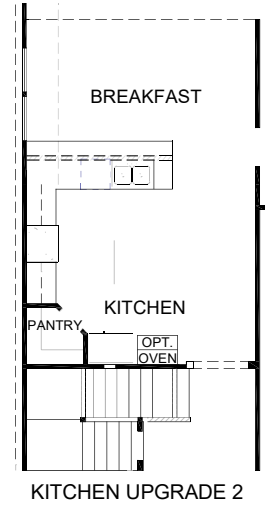
MASTER BAY OPTION



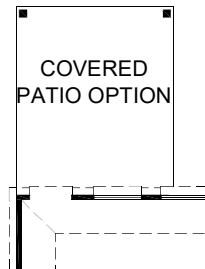
ENLARGED MASTER SHOWER OPTION



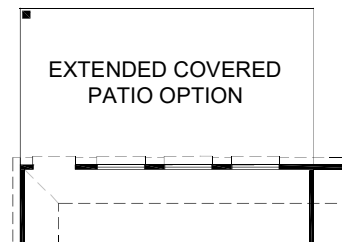
KITCHEN UPGRADE 1



KITCHEN UPGRADE 2



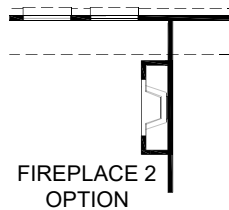
COVERED PATIO OPTION



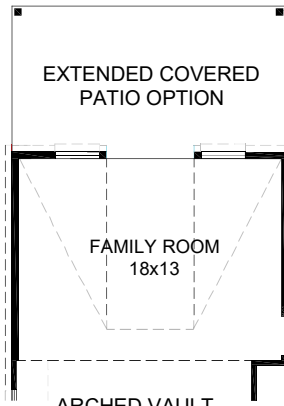
EXTENDED COVERED PATIO OPTION

FEATURES:

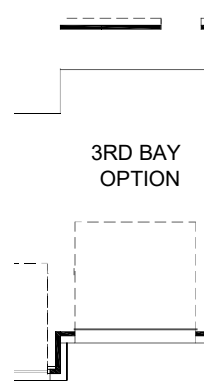
- 1,962 SQUARE FT.
- 4 BEDROOM
- 3 BATHROOM
- 2 CAR GARAGE



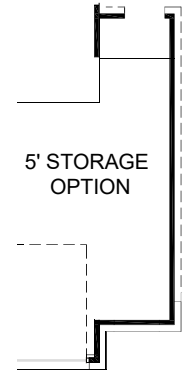
FIREPLACE 2 OPTION



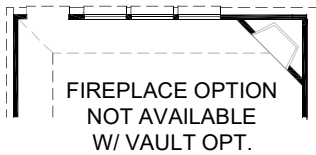
ARCHED VAULT COVERED PATIO OPTION



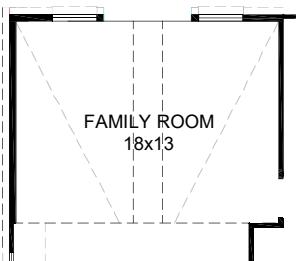
3RD BAY OPTION



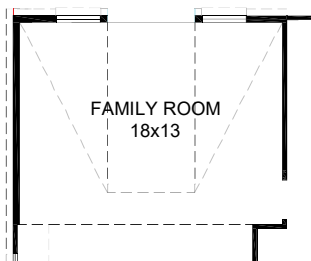
5' STORAGE OPTION



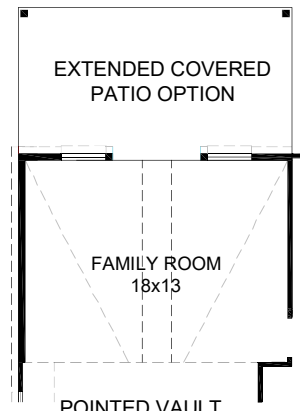
FIREPLACE OPTION NOT AVAILABLE W/ VAULT OPT.



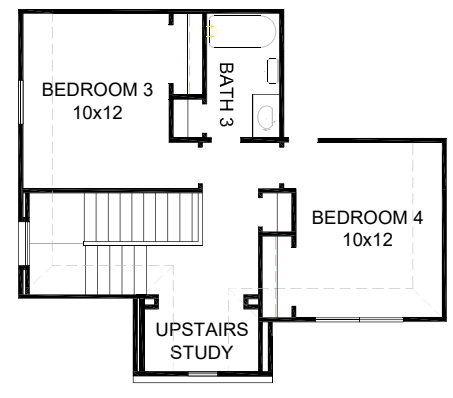
POINTED VAULT OPTION



ARCHED VAULT OPTION



POINTED VAULT COVERED PATIO OPTION



SECOND FLOOR

These drawings are conceptual only and are for the convenience of reference. They should not be relied upon as representations, express or implied, of the final detail of the residences. The builder expressly reserves the right to make modifications, revisions, and changes it deems desirable in its sole and absolute discretion. Dimensions and square footages are approximate and may vary with actual construction.

rev 08/19 (451K)



KIMBLE



ELEVATION A



ELEVATION B



ELEVATION C