



Archer



ELEVATION A



ELEVATION B



ELEVATION C



ELEVATION D



ELEVATION E

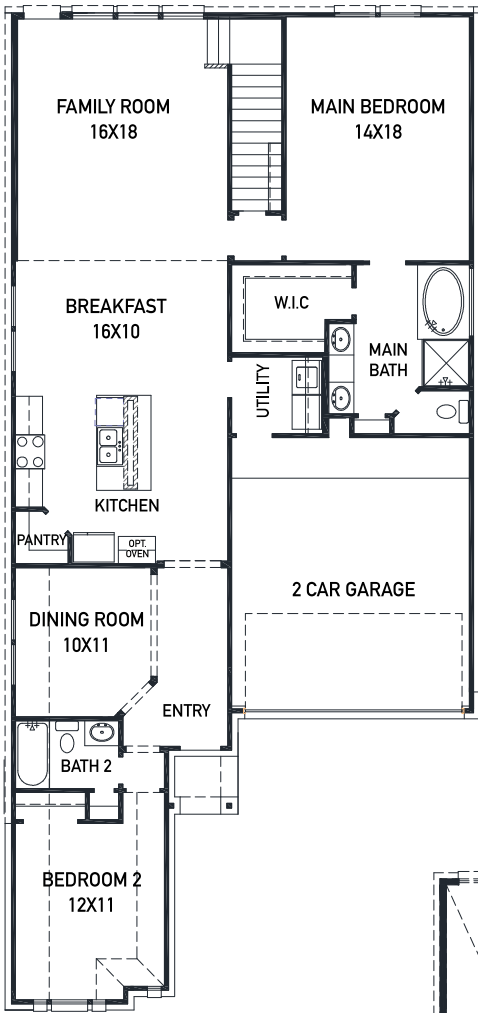
REV 8/20 (451A)



These drawings are conceptual only and are for the convenience of reference. They should not be relied upon as representations, express or implied, of the final detail of the residences. The builder expressly reserves the right to make modifications, revisions, and changes it deems desirable in its sole and absolute discretion. Dimensions and square footages are approximate and may vary with actual construction.



newmarkhomes.com



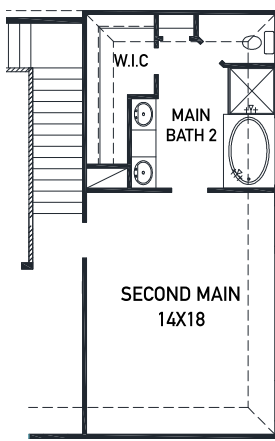
FIRST FLOOR PLAN

FEATURES:

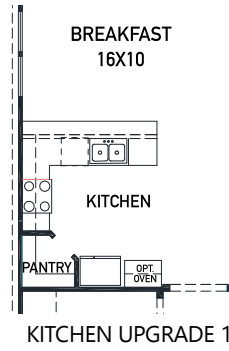
- 2,481 SQUARE FT.
- 4 BEDROOM
- 3 BATHROOM
- 2 CAR GARAGE



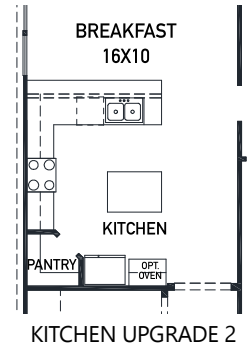
OPT. MAIN BEDROOM BAY



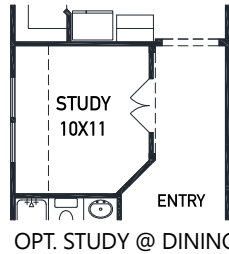
OPT. SECOND MAIN BATH



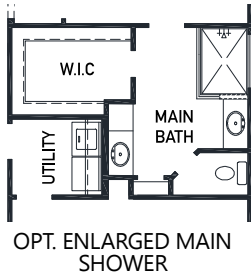
KITCHEN UPGRADE 1



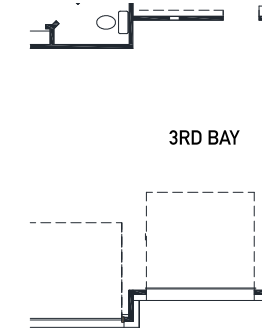
KITCHEN UPGRADE 2



OPT. STUDY @ DINING

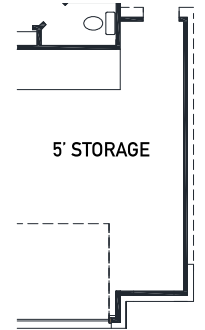


OPT. ENLARGED MAIN SHOWER



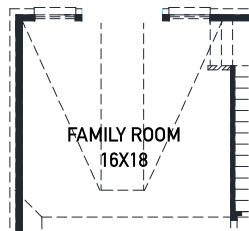
3RD BAY

OPT. 3RD BAY

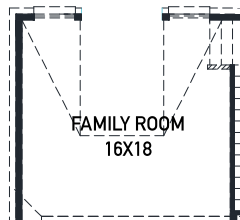


5' STORAGE

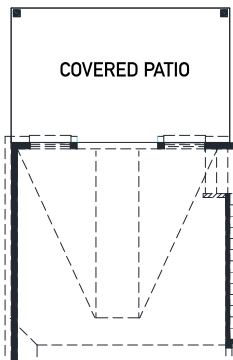
OPT. 5FT STORAGE



OPT. POINTED VAULT

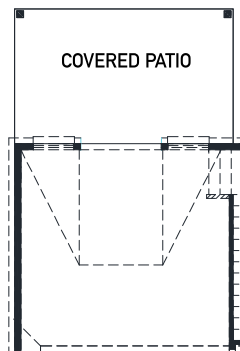


OPT. ARCHED VAULT



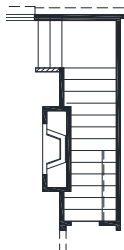
COVERED PATIO

OPT. COVERED PATIO W/
POINTED VAULT

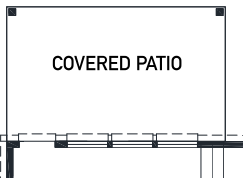


COVERED PATIO

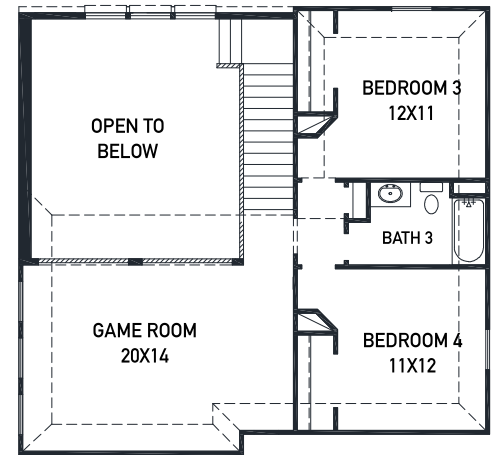
OPT. COVERED PATIO W/
ARCHED VAULT



OPT. FIREPLACE



OPT. COVERED PATIO



SECOND FLOOR PLAN

REV 8/20 (451A)



These drawings are conceptual only and are for the convenience of reference. They should not be relied upon as representations, express or implied, of the final detail of the residences. The builder expressly reserves the right to make modifications, revisions, and changes it deems desirable in its sole and absolute discretion. Dimensions and square footages are approximate and may vary with actual construction.