



# Charisma



**ELEVATION 1**



**ELEVATION 2**



**ELEVATION 3**

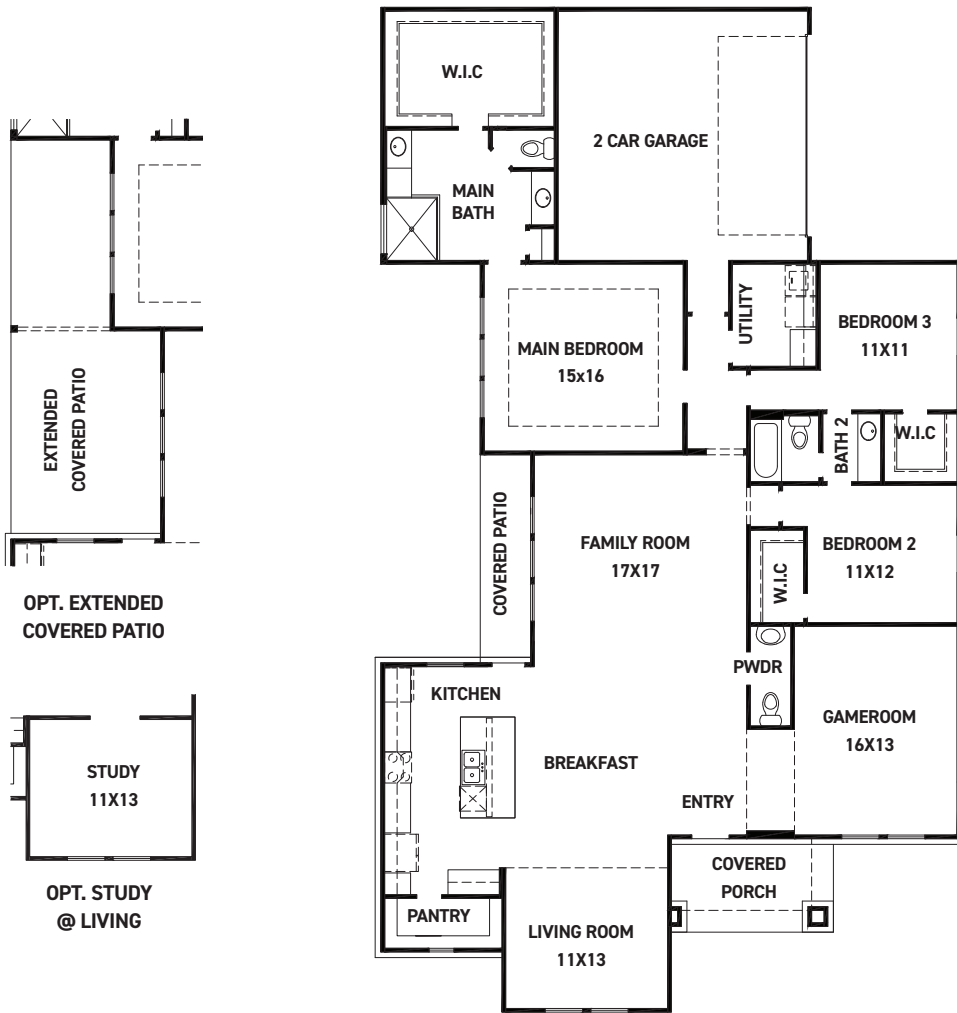
REV 08/24 (Q60A)



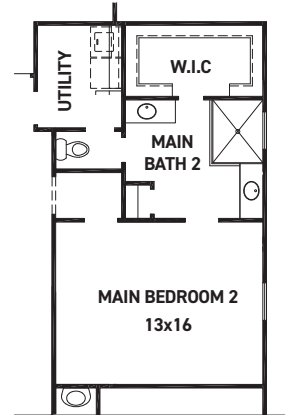
These drawings are conceptual only and are for the convenience of reference. They should not be relied upon as representations, express or implied, of the final detail of the residences. The builder expressly reserves the right to make modifications, revisions, and changes it deems desirable in its sole and absolute discretion. Dimensions and square footages are approximate and may vary with actual construction.



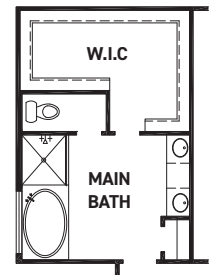
[newmarkhomes.com](http://newmarkhomes.com)



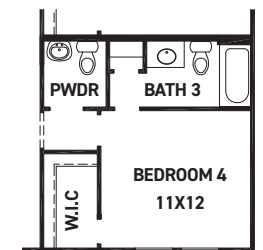
FIRST FLOOR PLAN



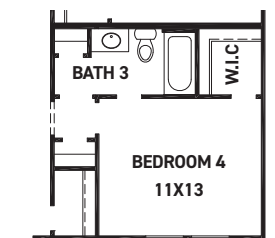
OPT. 2ND MAIN BEDROOM W/ MAIN BATH 2



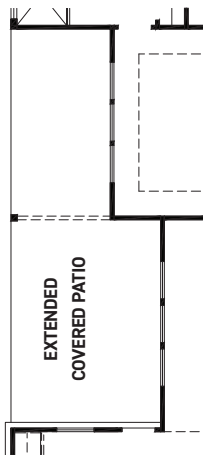
OPT. TUB @ MAIN BATH



OPT. BEDROOM 4, BATH 3, & POWDER



OPT. BEDROOM 4 W/ BATH 3 ILO GAME ROOM



OPT. EXTENDED COVERED PATIO



OPT. STUDY @ LIVING

FEATURES:

- 2,386 SQUARE FT.
- 3 BEDROOM
- 2 1/2 BATHROOM
- 2 CAR GARAGE

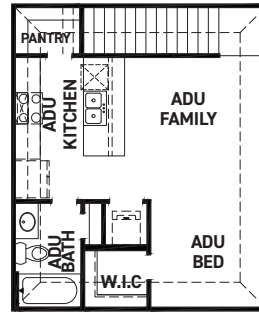
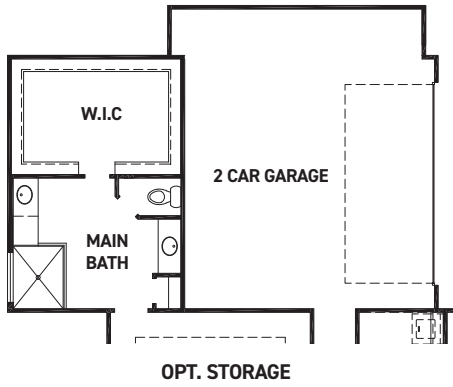
REV 08/24 (Q60A)



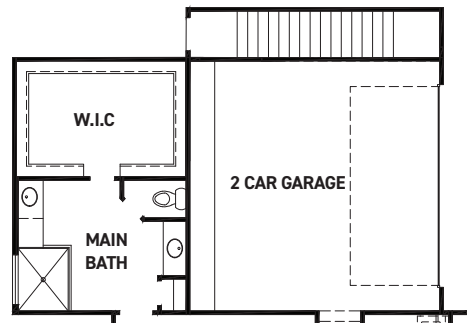
These drawings are conceptual only and are for the convenience of reference. They should not be relied upon as representations, express or implied, of the final detail of the residences. The builder expressly reserves the right to make modifications, revisions, and changes it deems desirable in its sole and absolute discretion. Dimensions and square footages are approximate and may vary with actual construction.



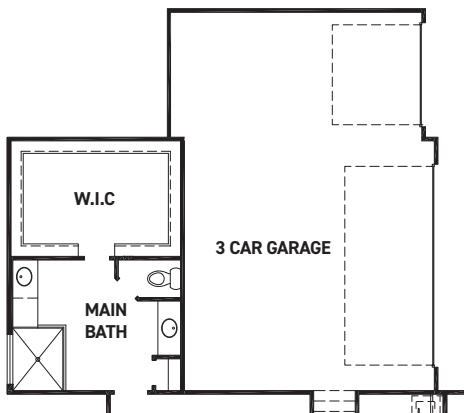
# Charisma



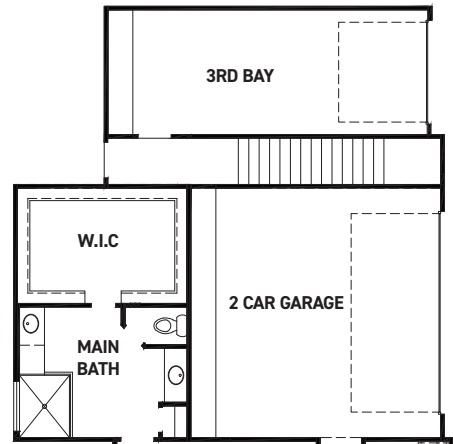
OPT. A.D.U  
+506 SQ. FT.



OPT. FIRST FLOOR W/ A.D.U



OPT. 3RD BAY



OPT. FIRST FLOOR W/ A.D.U  
& 3RD BAY

REV 08/24 (Q60A)



These drawings are conceptual only and are for the convenience of reference. They should not be relied upon as representations, express or implied, of the final detail of the residences. The builder expressly reserves the right to make modifications, revisions, and changes it deems desirable in its sole and absolute discretion. Dimensions and square footages are approximate and may vary with actual construction.



[newmarkhomes.com](http://newmarkhomes.com)



# Charisma



REV 08/24 (Q60A)



These drawings are conceptual only and are for the convenience of reference. They should not be relied upon as representations, express or implied, of the final detail of the residences. The builder expressly reserves the right to make modifications, revisions, and changes it deems desirable in its sole and absolute discretion. Dimensions and square footages are approximate and may vary with actual construction.



[newmarkhomes.com](http://newmarkhomes.com)