



# Finesse



**ELEVATION 1**



**ELEVATION 2**



**ELEVATION 3**

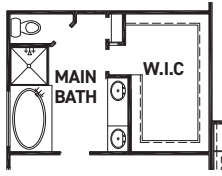
REV 07/23 (Q60B)



These drawings are conceptual only and are for the convenience of reference. They should not be relied upon as representations, express or implied, of the final detail of the residences. The builder expressly reserves the right to make modifications, revisions, and changes it deems desirable in its sole and absolute discretion. Dimensions and square footages are approximate and may vary with actual construction.



[newmarkhomes.com](http://newmarkhomes.com)



OPT. TUB @ MAIN BATH



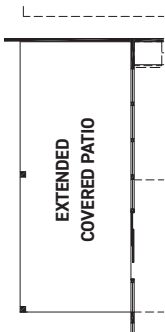
OPT. SLIDING DOOR @ MAIN BEDROOM



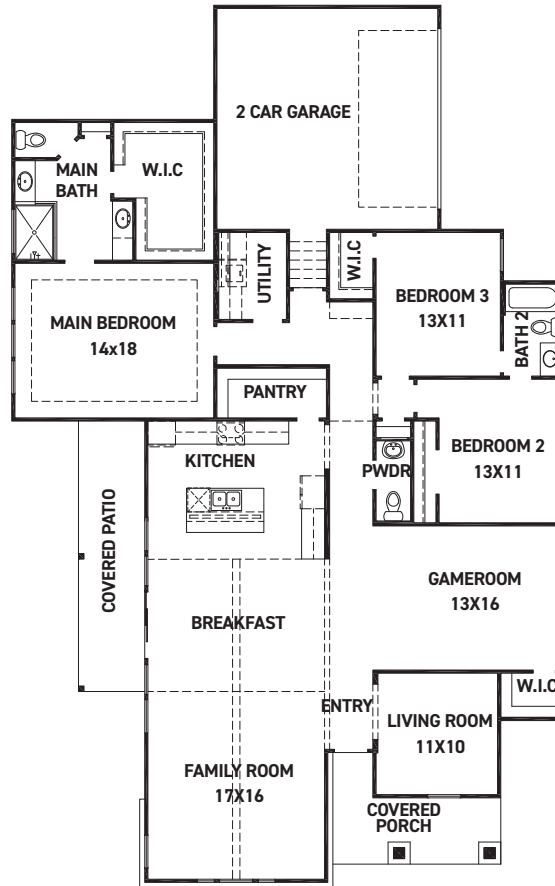
OPT. SLIDING DOOR @ KITCHEN



OPT. 12FT SLIDING DOOR @ BREAKFAST



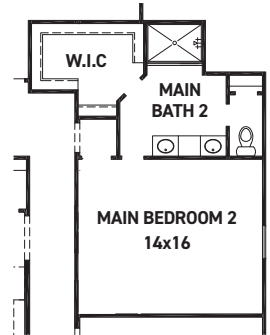
OPT. EXTENDED COVERED PATIO



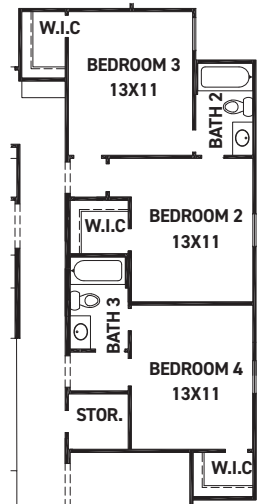
FIRST FLOOR PLAN

**FEATURES:**

- 2,377 SQUARE FT.
- 3 BEDROOM
- 2 1/2 BATHROOM
- 2 CAR GARAGE



OPT. 2ND MAIN BEDROOM W/ MAIN BATH 2



OPT. BEDROOM 4 W/ BATH 3 ILO GAME ROOM



OPT. BEDROOM 4, BATH 3, & POWDER ILO STORAGE



OPT. STUDY @ LIVING

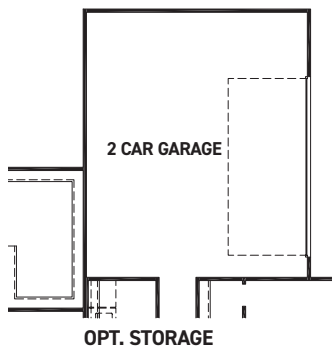
REV 07/23 (Q60B)



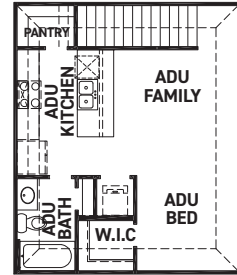
These drawings are conceptual only and are for the convenience of reference. They should not be relied upon as representations, express or implied, of the final detail of the residences. The builder expressly reserves the right to make modifications, revisions, and changes it deems desirable in its sole and absolute discretion. Dimensions and square footages are approximate and may vary with actual construction.



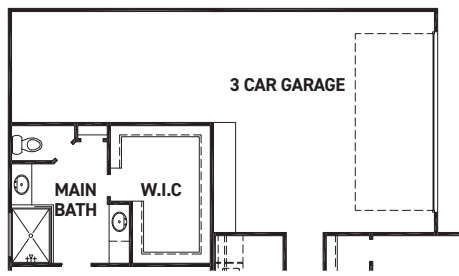
# Finesse



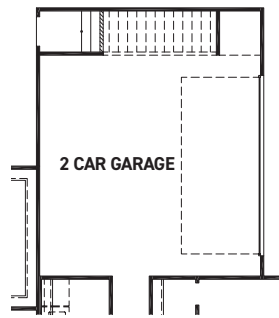
OPT. STORAGE



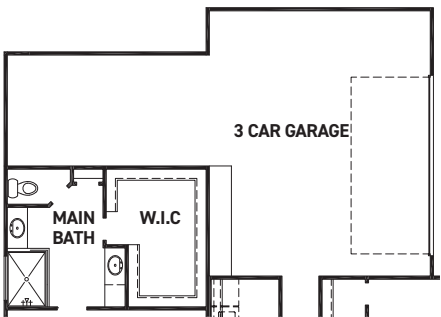
OPT. A.D.U.  
+506 SQ. FT.



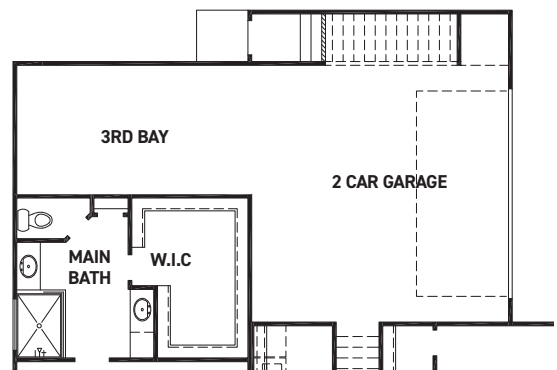
OPT. 3RD BAY



OPT. FIRST FLOOR W/ A.D.U



OPT. 3RD BAY W/ STORAGE



OPT. FIRST FLOOR W/ A.D.U  
& 3RD BAY

REV 07/23 (Q60B)



These drawings are conceptual only and are for the convenience of reference. They should not be relied upon as representations, express or implied, of the final detail of the residences. The builder expressly reserves the right to make modifications, revisions, and changes it deems desirable in its sole and absolute discretion. Dimensions and square footages are approximate and may vary with actual construction.



[newmarkhomes.com](http://newmarkhomes.com)



# Finesse



REV 07/23 (Q60B)



These drawings are conceptual only and are for the convenience of reference. They should not be relied upon as representations, express or implied, of the final detail of the residences. The builder expressly reserves the right to make modifications, revisions, and changes it deems desirable in its sole and absolute discretion. Dimensions and square footages are approximate and may vary with actual construction.



[newmarkhomes.com](http://newmarkhomes.com)