



Headwaters

Shiplap



ELEVATION 2



ELEVATION 7



ELEVATION 8

REV 07/23 (5032)A



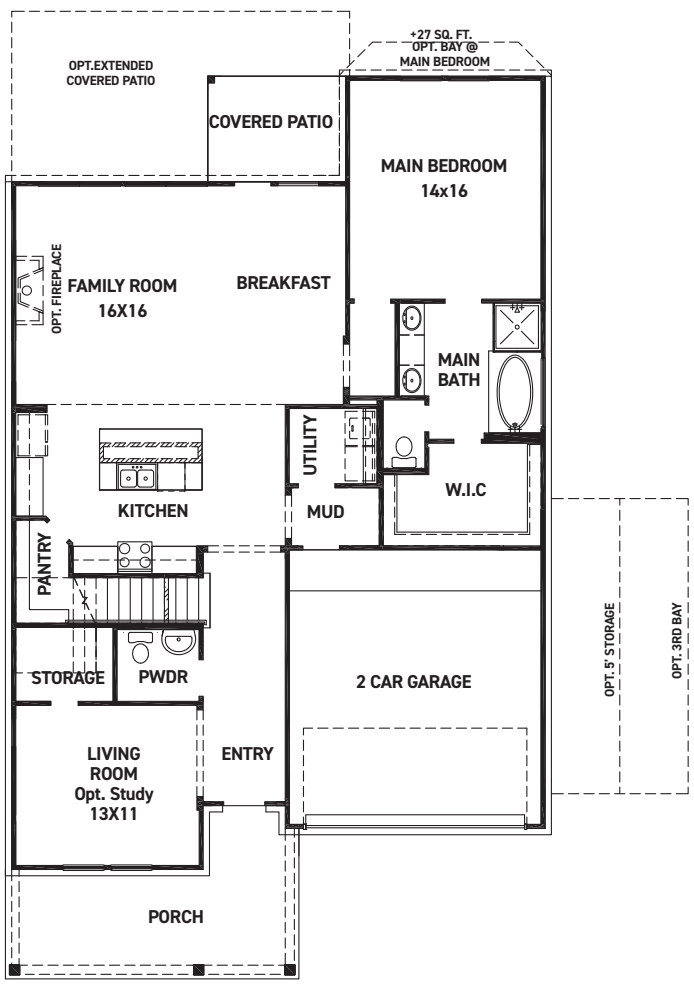
These drawings are conceptual only and are for the convenience of reference. They should not be relied upon as representations, express or implied, of the final detail of the residences. The builder expressly reserves the right to make modifications, revisions, and changes it deems desirable in its sole and absolute discretion. Dimensions and square footages are approximate and may vary with actual construction. Due to design and footage requirements not all options/elevations are available in all locations.



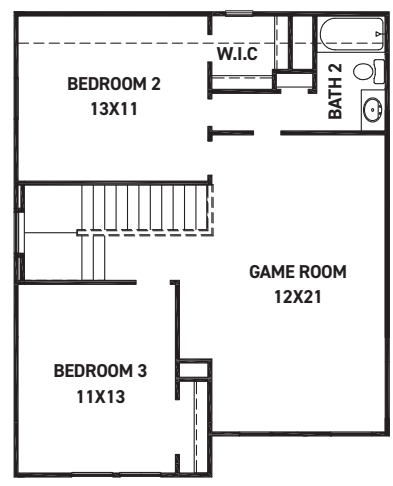
newmarkhomes.com



Shiplap



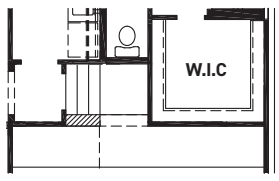
FIRST FLOOR PLAN



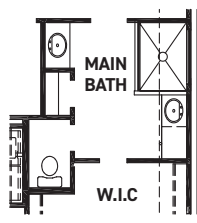
SECOND FLOOR PLAN

FEATURES:

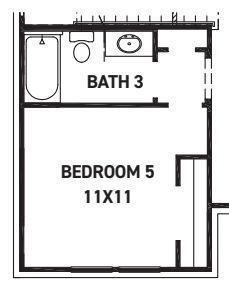
- 2,454 SQUARE FT.
- 3 BEDROOM
- 2 1/2 BATHROOM
- 2 CAR GARAGE



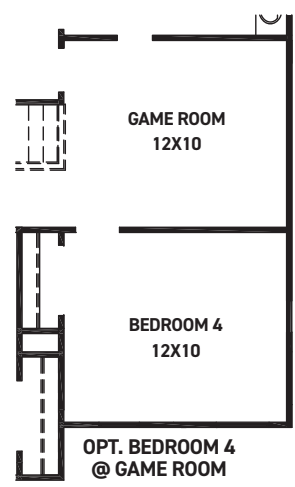
STAIRS FOR DROP GARAGE OPT.



OPT. ENLARGED MAIN SHOWER



OPT. BEDROOM 5 W/ BATH 3 @ LIVING



OPT. BEDROOM 4 @ GAME ROOM

REV 07/23(5032)A



These drawings are conceptual only and are for the convenience of reference. They should not be relied upon as representations, express or implied, of the final detail of the residences. The builder expressly reserves the right to make modifications, revisions, and changes it deems desirable in its sole and absolute discretion. Dimensions and square footages are approximate and may vary with actual construction. Due to design and footage requirements not all options/elevations are available in all locations.



newmarkhomes.com