

# N

## PROVENCE

# Vanilla Bean



ELEVATION D

REV 3/20 (5030)



These drawings are conceptual only and are for the convenience of reference. They should not be relied upon as representations, express or implied, of the final detail of the residences. The builder expressly reserves the right to make modifications, revisions, and changes it deems desirable in its sole and absolute discretion. Dimensions and square footages are approximate and may vary with actual construction.

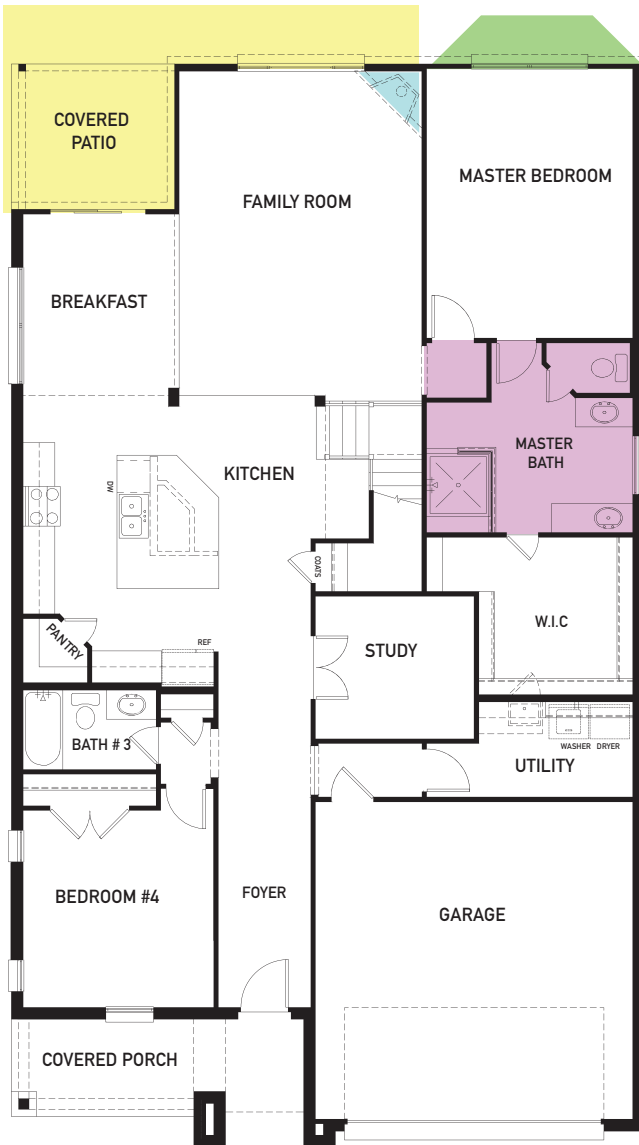
**NEW MARK**  
HOMES

[newmarkhomes.com](http://newmarkhomes.com)

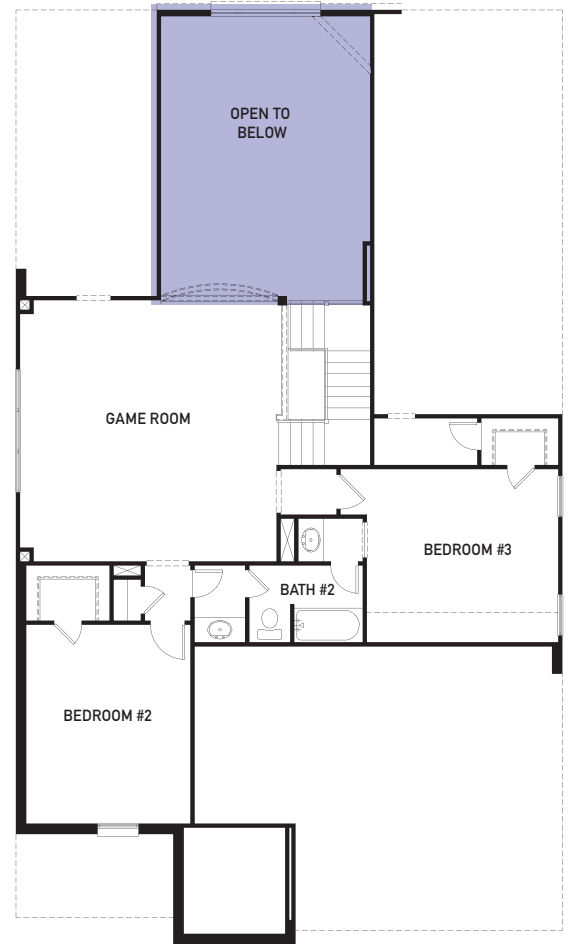
# N

# PROVENCE

# Vanilla Bean



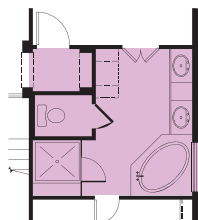
FIRST FLOOR PLAN



SECOND FLOOR PLAN

## FEATURES:

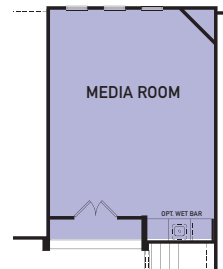
3,020 SQ. FT.  
4 BEDROOM  
3 BATHROOM  
2 CAR GARAGE



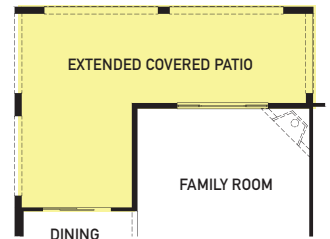
OPTIONAL  
MASTER BATH



OPTIONAL  
BAY WINDOW



OPTIONAL  
MEDIA ROOM



OPTIONAL EXTENDED  
COVERED PATIO

REV 3/20 (5030)



These drawings are conceptual only and are for the convenience of reference. They should not be relied upon as representations, express or implied, of the final detail of the residences. The builder expressly reserves the right to make modifications, revisions, and changes it deems desirable in its sole and absolute discretion. Dimensions and square footages are approximate and may vary with actual construction.

**NEWMARK**  
HOMES

[newmarkhomes.com](http://newmarkhomes.com)