



Provence

Vanilla Bean



ELEVATION A



ELEVATION C



ELEVATION D

REV 8/21 (5030)



These drawings are conceptual only and are for the convenience of reference. They should not be relied upon as representations, express or implied, of the final detail of the residences. The builder expressly reserves the right to make modifications, revisions, and changes it deems desirable in its sole and absolute discretion. Dimensions and square footages are approximate and may vary with actual construction.

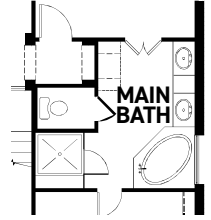
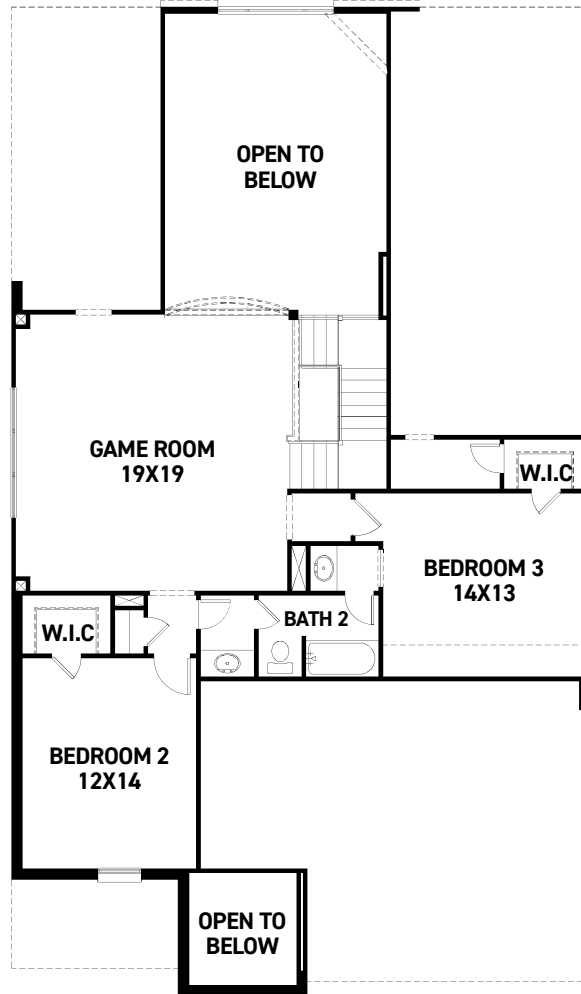
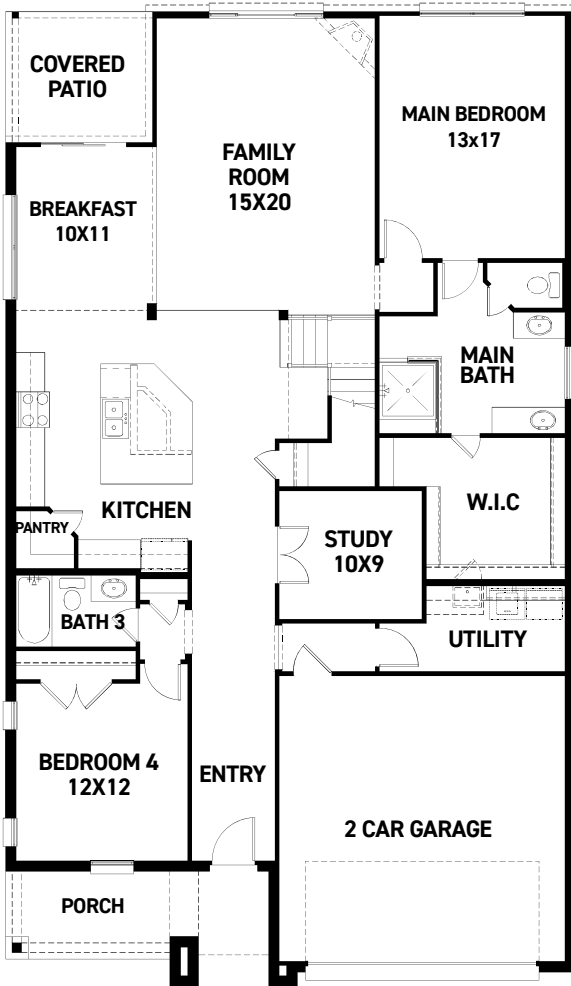


newmarkhomes.com

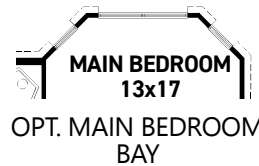
N

Provence

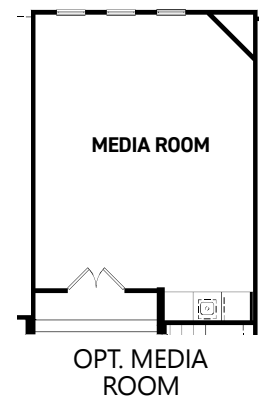
Vanilla Bean



OPT. ENLARGED
MAIN BATH



OPT. MAIN BEDROOM
BAY



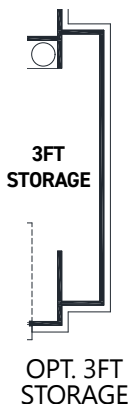
OPT. MEDIA
ROOM

FIRST FLOOR PLAN

SECOND FLOOR PLAN

FEATURES:

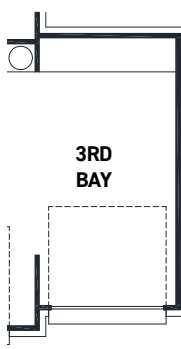
- 3,020 SQUARE FT.
- 4 BEDROOM
- 3 BATHROOM
- 2 CAR GARAGE



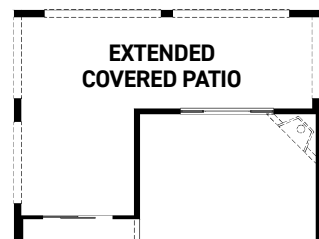
OPT. 3FT
STORAGE



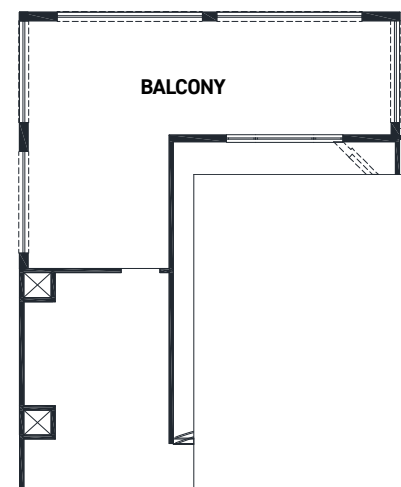
OPT. 5FT
STORAGE



OPT. 3RD BAY



OPT. EXTENDED
COVERED PATIO



OPT. BALCONY

REV 8/21 (5030)



These drawings are conceptual only and are for the convenience of reference. They should not be relied upon as representations, express or implied, of the final detail of the residences. The builder expressly reserves the right to make modifications, revisions, and changes it deems desirable in its sole and absolute discretion. Dimensions and square footages are approximate and may vary with actual construction.

NEWMARK
HOMES

newmarkhomes.com