

# N

# PROVENCE

# Zilker



**ELEVATION 3**



**ELEVATION 4**



**ELEVATION 6**

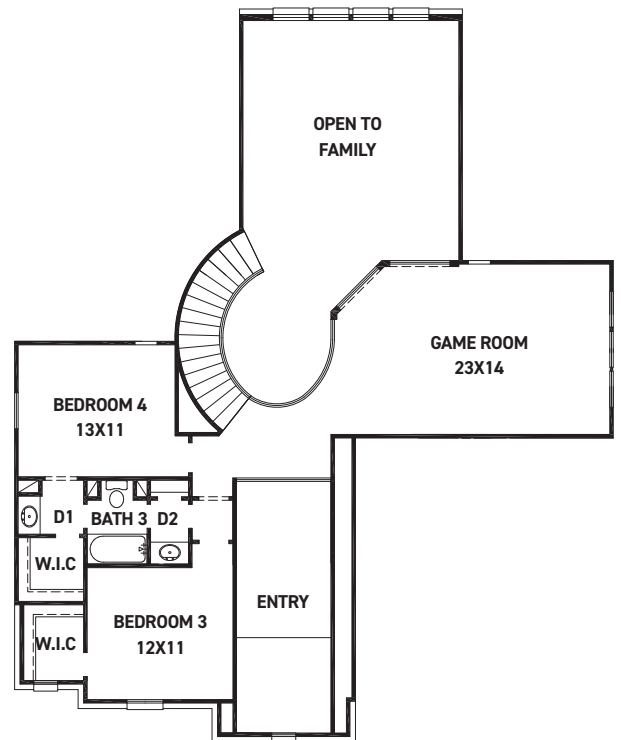
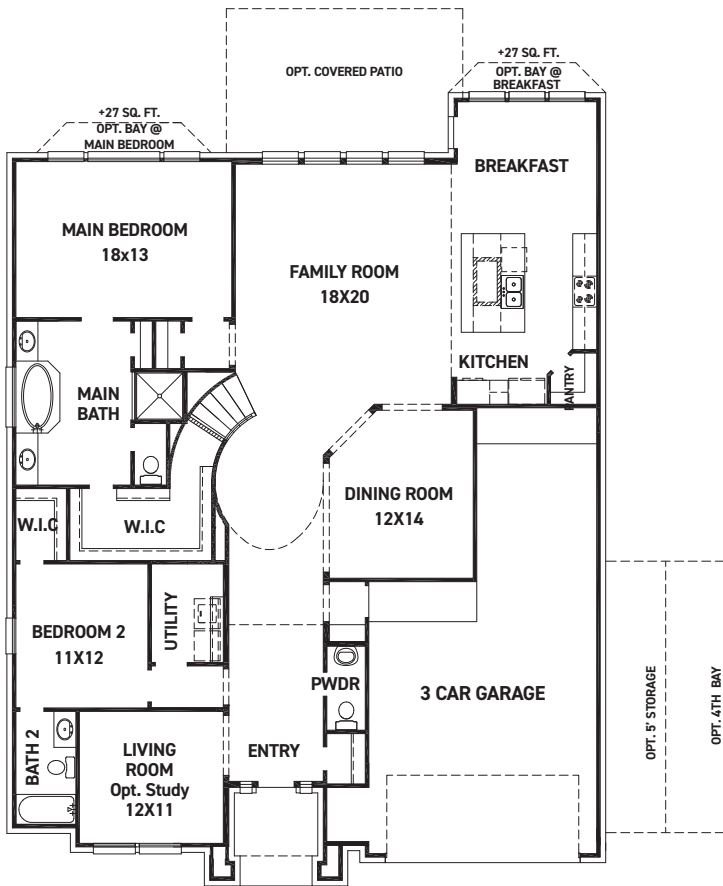
REV 07/23 (6028)



These drawings are conceptual only and are for the convenience of reference. They should not be relied upon as representations, express or implied, of the final detail of the residences. The builder expressly reserves the right to make modifications, revisions, and changes it deems desirable in its sole and absolute discretion. Dimensions and square footages are approximate and may vary with actual construction.

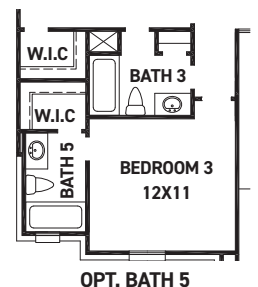
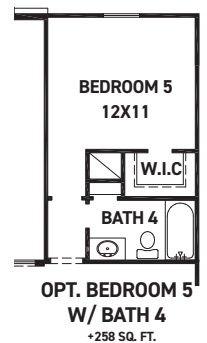
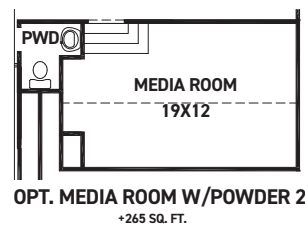
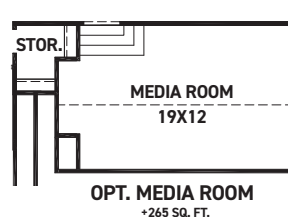
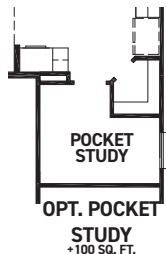
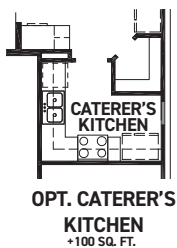
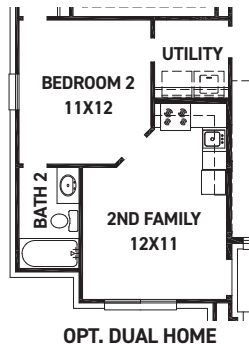
**NEW MARK**  
HOMES

[newmarkhomes.com](http://newmarkhomes.com)



## FEATURES:

- 3,221 SQUARE FT.
- 4 BEDROOM
- 3 1/2 BATHROOM
- 3 CAR GARAGE



REV 07/23 2(6028)



These drawings are conceptual only and are for the convenience of reference. They should not be relied upon as representations, express or implied, of the final detail of the residences. The builder expressly reserves the right to make modifications, revisions, and changes it deems desirable in its sole and absolute discretion. Dimensions and square footages are approximate and may vary with actual construction.