



**ELEVATION 3**



**ELEVATION 5**



**ELEVATION 6**



**ELEVATION 7**



**ELEVATION 11**



**ELEVATION 12**



**ELEVATION 13**

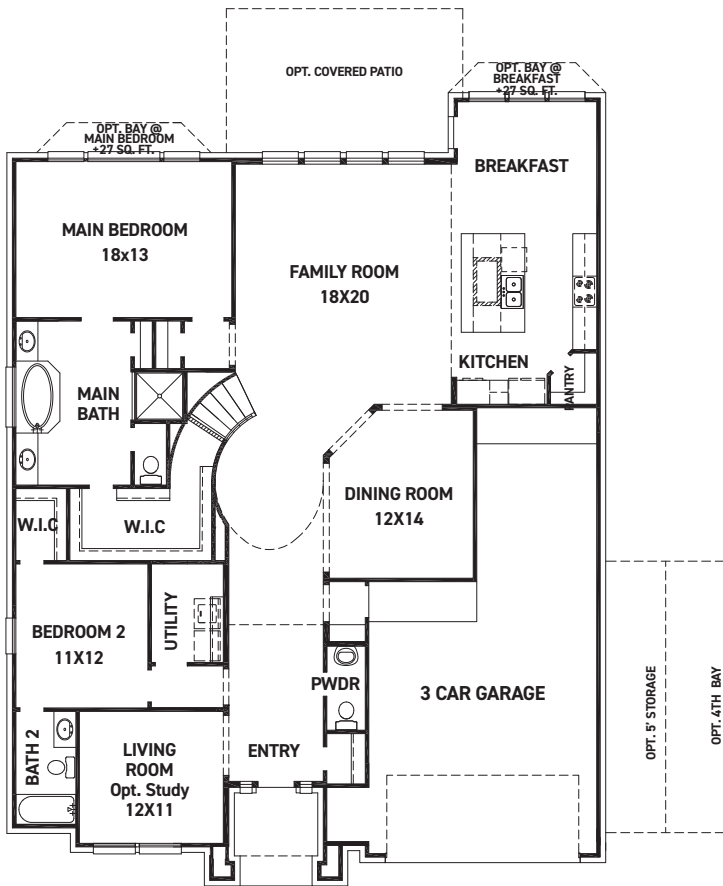
REV 10/23 (6028)



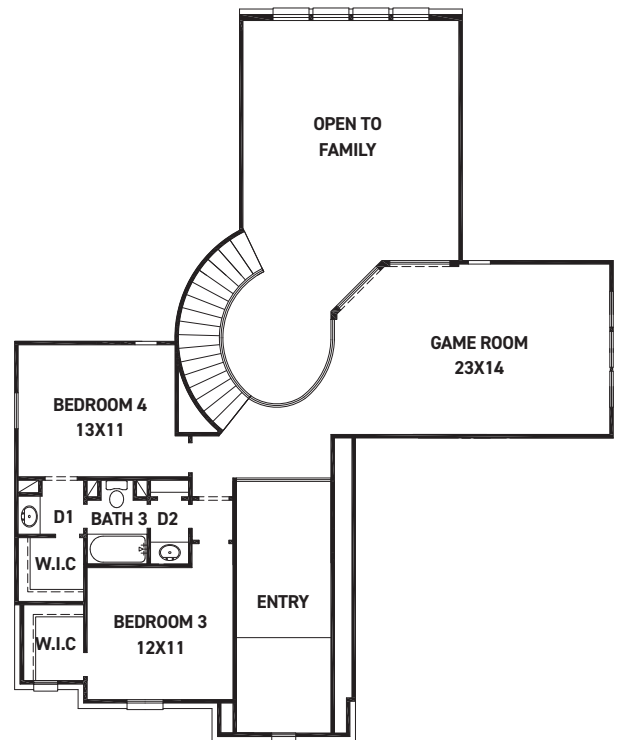
These drawings are conceptual only and are for the convenience of reference. They should not be relied upon as representations, express or implied, of the final detail of the residences. The builder expressly reserves the right to make modifications, revisions, and changes it deems desirable in its sole and absolute discretion. Dimensions and square footages are approximate and may vary with actual construction. Due to design and footage requirements not all options/elevations are available in all locations.



[newmarkhomes.com](http://newmarkhomes.com)



FIRST FLOOR PLAN



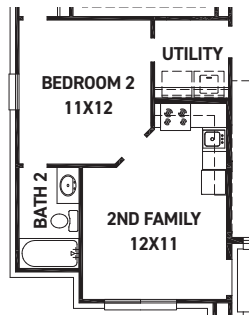
SECOND FLOOR PLAN

## FEATURES:

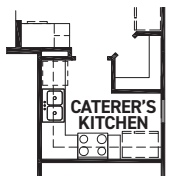
- 3,221 SQUARE FT.
- 4 BEDROOM
- 3 1/2 BATHROOM
- 3 CAR GARAGE



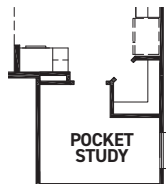
OPT. FIREPLACE



OPT. DUAL HOME



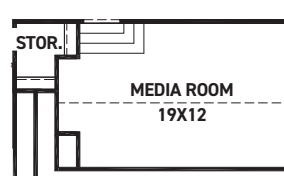
OPT. CATERER'S KITCHEN +100 SQ. FT.



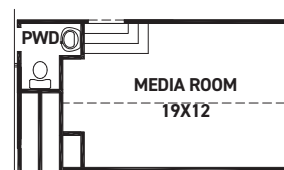
OPT. POCKET STUDY +100 SQ. FT.



OPT. POWDER 2



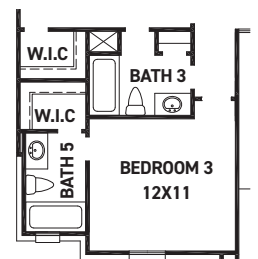
OPT. MEDIA ROOM +265 SQ. FT.



OPT. MEDIA ROOM W/POWDER 2 +265 SQ. FT.



OPT. BEDROOM 5 W/ BATH 4 +258 SQ. FT.



OPT. BATH 5

REV 10/23 2(6028)



These drawings are conceptual only and are for the convenience of reference. They should not be relied upon as representations, express or implied, of the final detail of the residences. The builder expressly reserves the right to make modifications, revisions, and changes it deems desirable in its sole and absolute discretion. Dimensions and square footages are approximate and may vary with actual construction. Due to design and footage requirements not all options/elevations are available in all locations.