



# Chesterfield



**ELEVATION 1**



**ELEVATION 2**



**ELEVATION 3**



**ELEVATION 4**

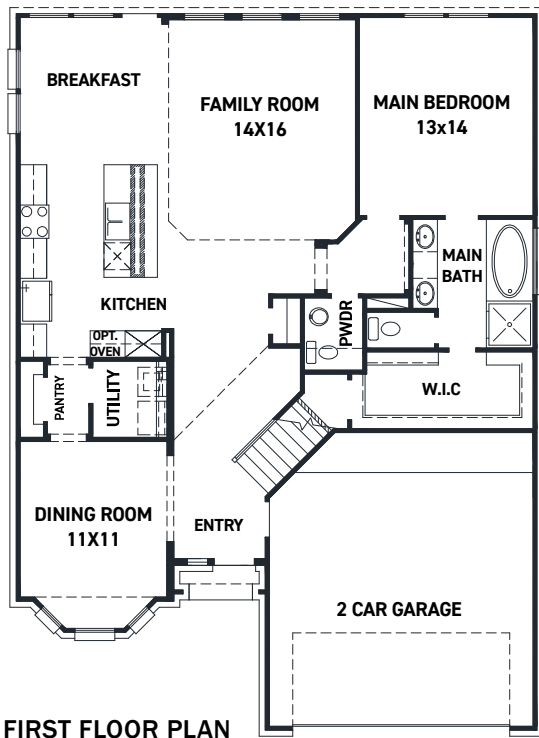
REV 3/21 (5012)



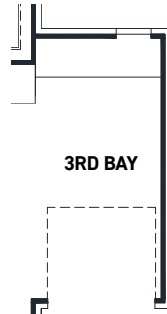
These drawings are conceptual only and are for the convenience of reference. They should not be relied upon as representations, express or implied, of the final detail of the residences. The builder expressly reserves the right to make modifications, revisions, and changes it deems desirable in its sole and absolute discretion. Dimensions and square footages are approximate and may vary with actual construction.



[newmarkhomes.com](http://newmarkhomes.com)



FIRST FLOOR PLAN



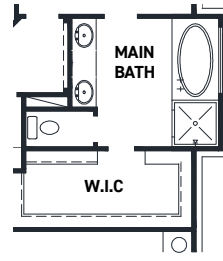
3RD BAY

OPT. 3RD BAY

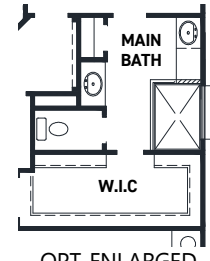


5' STORAGE

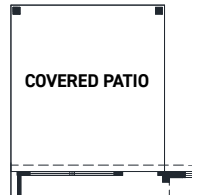
OPT. 5FT STORAGE



OPT. EXTENDED MAIN BATH



OPT. ENLARGED MAIN SHOWER  
\*NOT AVAIL. W/ EXTENDED MAIN BATH



OPT. COVERED PATIO



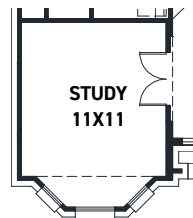
OPT. BAY @ FAMILY



OPT. BAY @ FAMILY W/ FIREPLACE



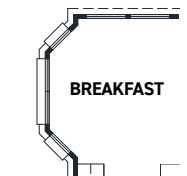
OPT. MAIN BEDROOM BAY



OPT. STUDY @ DINING



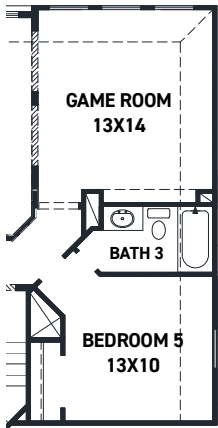
OPT. FIREPLACE



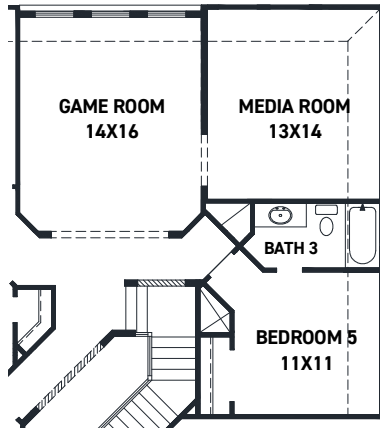
OPT. BREAKFAST BAY

## FEATURES:

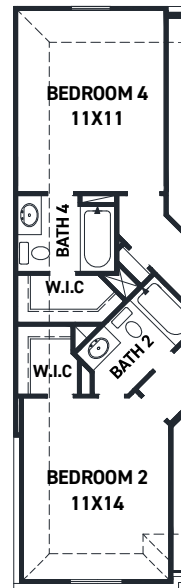
- 2,627 SQUARE FT.
- 4 BEDROOM
- 2 1/2 BATHROOM
- 2 CAR GARAGE



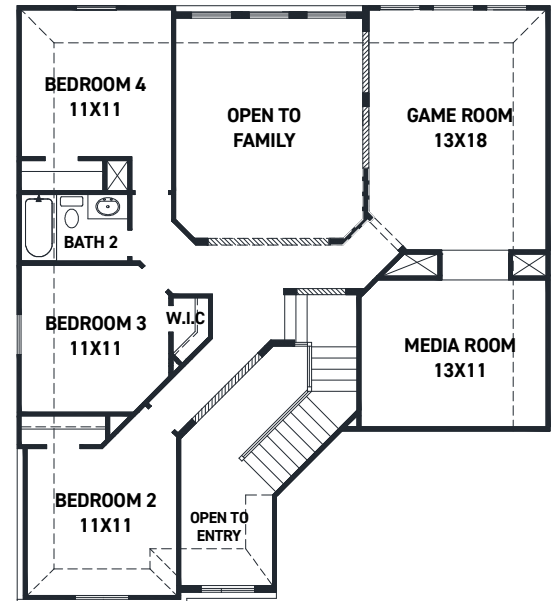
OPT. BEDROOM 5 W/ BATH 3



OPT. BEDROOM 5 W/ BATH 3 & GAMEROM/MEDIA



OPT. ENLARGED BEDROOMS 2 & 4 W/ BATH 4 OPTION



SECOND FLOOR PLAN

REV 3/21 (5012)



These drawings are conceptual only and are for the convenience of reference. They should not be relied upon as representations, express or implied, of the final detail of the residences. The builder expressly reserves the right to make modifications, revisions, and changes it deems desirable in its sole and absolute discretion. Dimensions and square footages are approximate and may vary with actual construction.