



# Classic



**ELEVATION 1**



**ELEVATION 2**



**ELEVATION 3**

REV 09/24(Q45E)



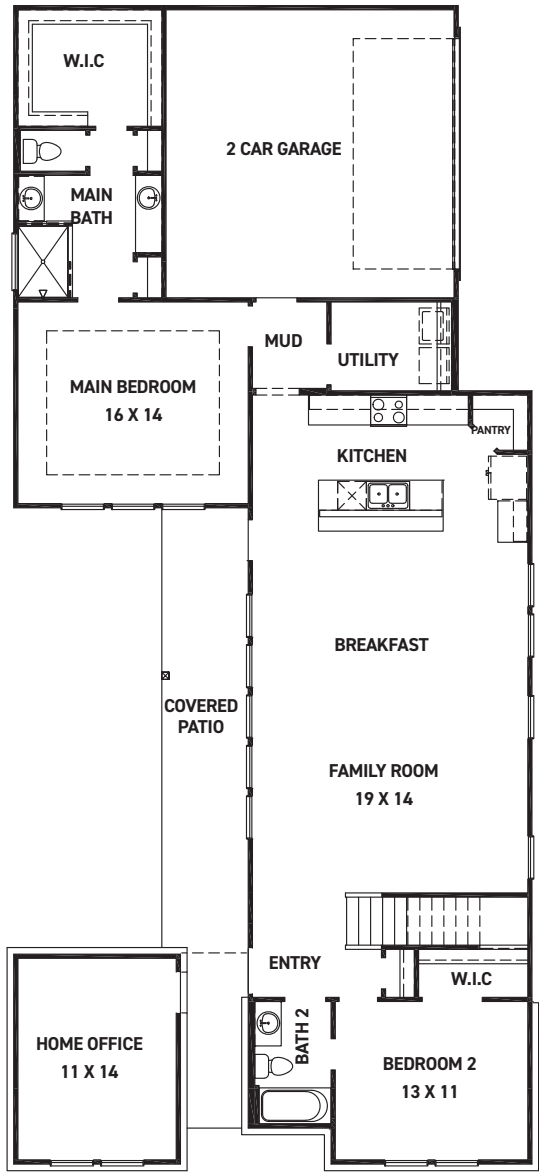
These drawings are conceptual only and are for the convenience of reference. They should not be relied upon as representations, express or implied, of the final detail of the residences. The builder expressly reserves the right to make modifications, revisions, and changes it deems desirable in its sole and absolute discretion. Dimensions and square footages are approximate and may vary with actual construction. Due to design and footage requirements not all options/elevations are available in all locations.



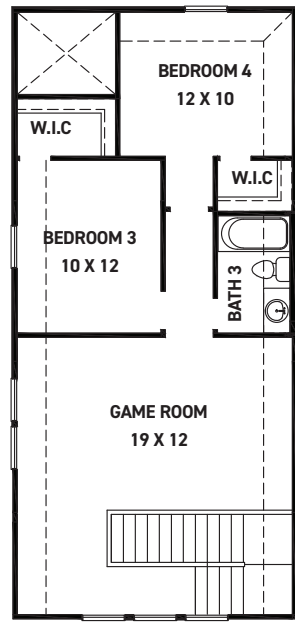
[newmarkhomes.com](http://newmarkhomes.com)



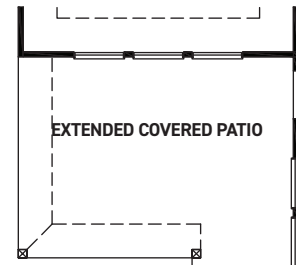
# Classic



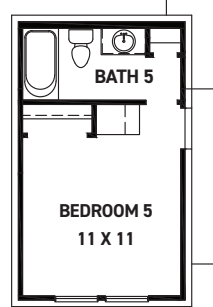
FIRST FLOOR PLAN



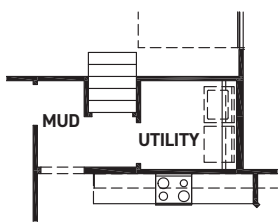
SECOND FLOOR PLAN



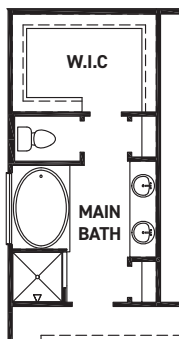
OPT. EXTENDED COVERED PATIO



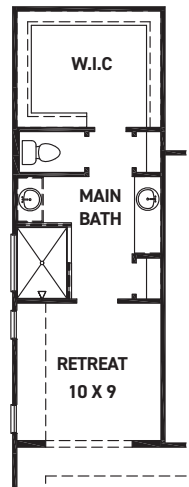
OPT. BEDROOM 5 BATH 5 +54 SQ. FT.



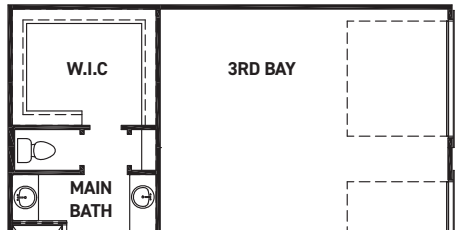
OPT. 3' DROPPED GARAGE



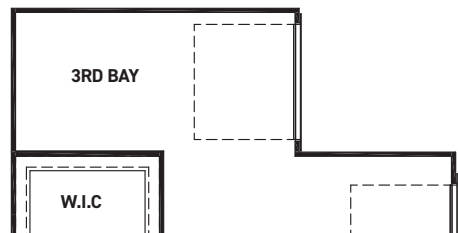
OPT. TUB MAIN BATH



OPT. RETREAT @ MAIN BEDROOM +106 SQ. FT.



OPT. 3RD BAY W/ RETREAT @ MAIN BEDROOM



OPT. 3RD BAY

## FEATURES:

- 2466 SQUARE FT.
- 4 BEDROOM
- 3 BATHROOM
- 2 CAR GARAGE

REV 09/24 (Q45E)



These drawings are conceptual only and are for the convenience of reference. They should not be relied upon as representations, express or implied, of the final detail of the residences. The builder expressly reserves the right to make modifications, revisions, and changes it deems desirable in its sole and absolute discretion. Dimensions and square footages are approximate and may vary with actual construction. Due to design and footage requirements not all options/elevations are available in all locations.



[newmarkhomes.com](http://newmarkhomes.com)