



# Grand Villa Messina



**ELEVATION 1**



**ELEVATION 2**



**ELEVATION 3**



**ELEVATION 4**



**ELEVATION 5**



**ELEVATION 6**

REV 06/24 (100B)



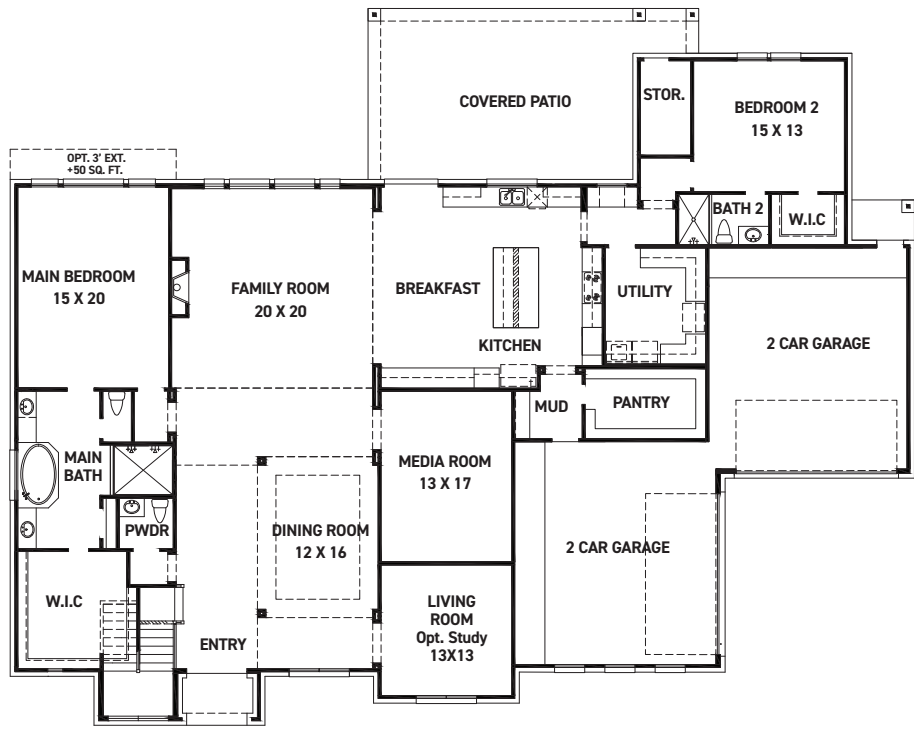
These drawings are conceptual only and are for the convenience of reference. They should not be relied upon as representations, express or implied, of the final detail of the residences. The builder expressly reserves the right to make modifications, revisions, and changes it deems desirable in its sole and absolute discretion. Dimensions and square footages are approximate and may vary with actual construction. Due to design and footage requirements not all options/elevations are available in all locations.



**FEDRICK HARRIS**  
ESTATE HOMES



# Grand Villa Messina



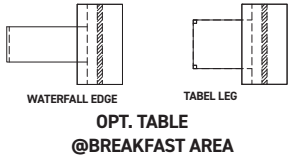
FIRST FLOOR PLAN



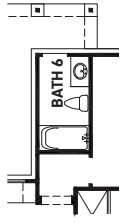
SECOND FLOOR PLAN

### FEATURES:

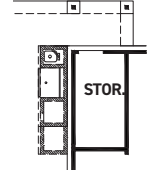
- 4,959 SQUARE FT.
- 5 BEDROOM
- 5 1/2 BATHROOM
- 4 CAR SPLIT GARAGE



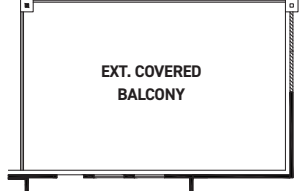
OPT. TABLE @ BREAKFAST AREA



OPT. BATH 6 +58 SQ. FT.



OPT. OUTDOOR KITCHEN



OPT. EXTENDED COVERED BALCONY

REV 06/24 (100B)



These drawings are conceptual only and are for the convenience of reference. They should not be relied upon as representations, express or implied, of the final detail of the residences. The builder expressly reserves the right to make modifications, revisions, and changes it deems desirable in its sole and absolute discretion. Dimensions and square footages are approximate and may vary with actual construction. Due to design and footage requirements not all options/elevations are available in all locations.



FEDRICK HARRIS ESTATE HOMES