



# Grayson



**ELEVATION A**



**ELEVATION B**



**ELEVATION C**



**ELEVATION D**



**ELEVATION E**

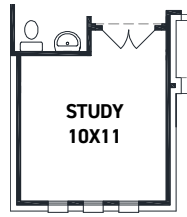
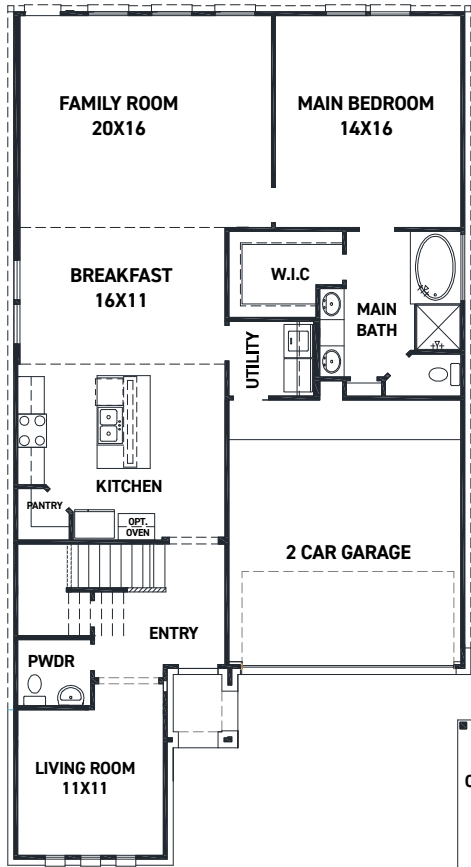
REV 01/21 (451G)



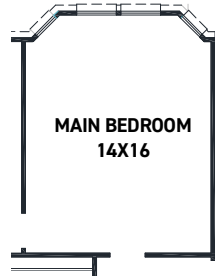
These drawings are conceptual only and are for the convenience of reference. They should not be relied upon as representations, express or implied, of the final detail of the residences. The builder expressly reserves the right to make modifications, revisions, and changes it deems desirable in its sole and absolute discretion. Dimensions and square footages are approximate and may vary with actual construction.



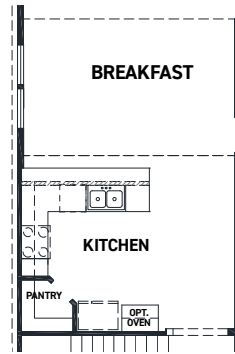
[newmarkhomes.com](http://newmarkhomes.com)



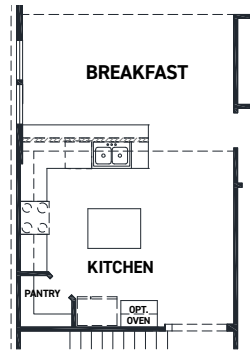
OPT. STUDY @ LIVING



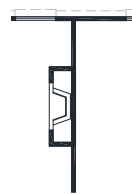
OPT. MAIN BEDROOM BAY



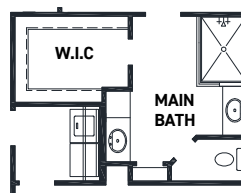
KITCHEN UPGRADE 1



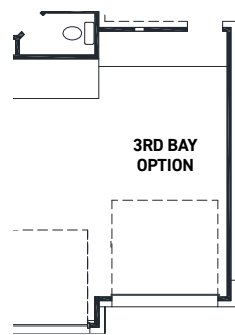
KITCHEN UPGRADE 2



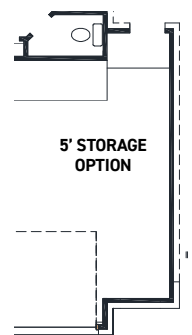
OPT. FIREPLACE



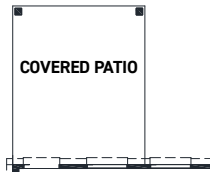
OPT. ENLARGED MAIN SHOWER



3RD BAY OPTION

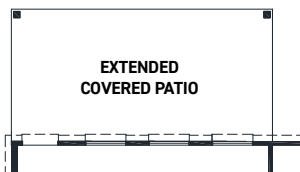


5' STORAGE OPTION



COVERED PATIO

OPT. COVERED PATIO



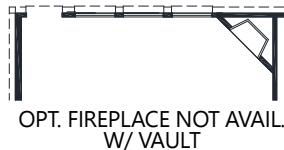
EXTENDED COVERED PATIO

OPT. EXTENDED COVERED PATIO

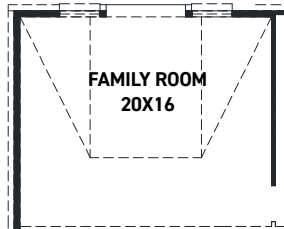
**FIRST FLOOR PLAN**

**FEATURES:**

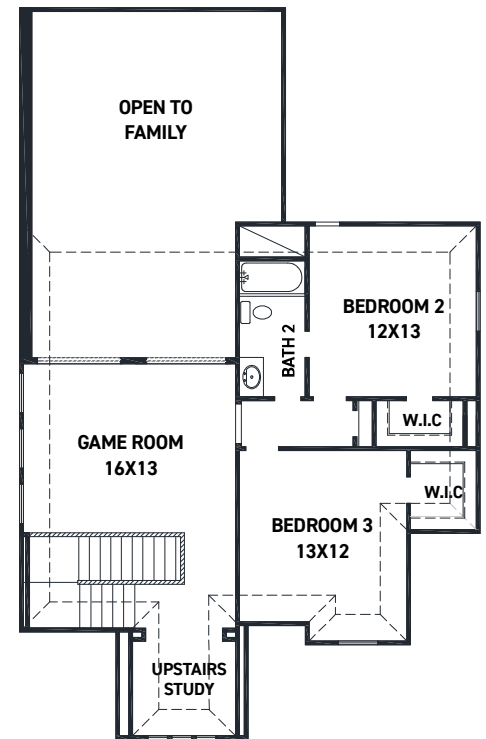
- 2,421 SQUARE FT.
- 3 BEDROOM
- 2 1/2 BATHROOM
- 2 CAR GARAGE



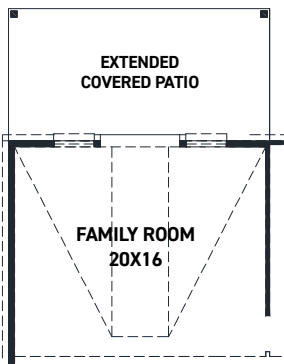
OPT. FIREPLACE NOT AVAIL. W/ VAULT



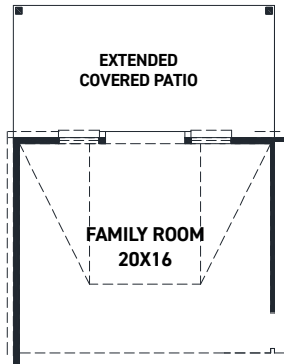
OPT. ARCHED VAULT



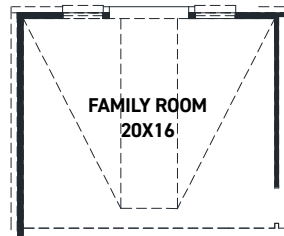
**SECOND FLOOR PLAN**



OPT. EXTENDED COVERED PATIO W/ POINTED VAULT



OPT. EXTENDED COVERED PATIO W/ ARCHED VAULT



OPT. POINTED VAULT

REV 01/21 (451G)



These drawings are conceptual only and are for the convenience of reference. They should not be relied upon as representations, express or implied, of the final detail of the residences. The builder expressly reserves the right to make modifications, revisions, and changes it deems desirable in its sole and absolute discretion. Dimensions and square footages are approximate and may vary with actual construction.