



Villa Greenwich



ELEVATION 6



ELEVATION 7



ELEVATION 8



ELEVATION 9

REV 02/23 (9017)



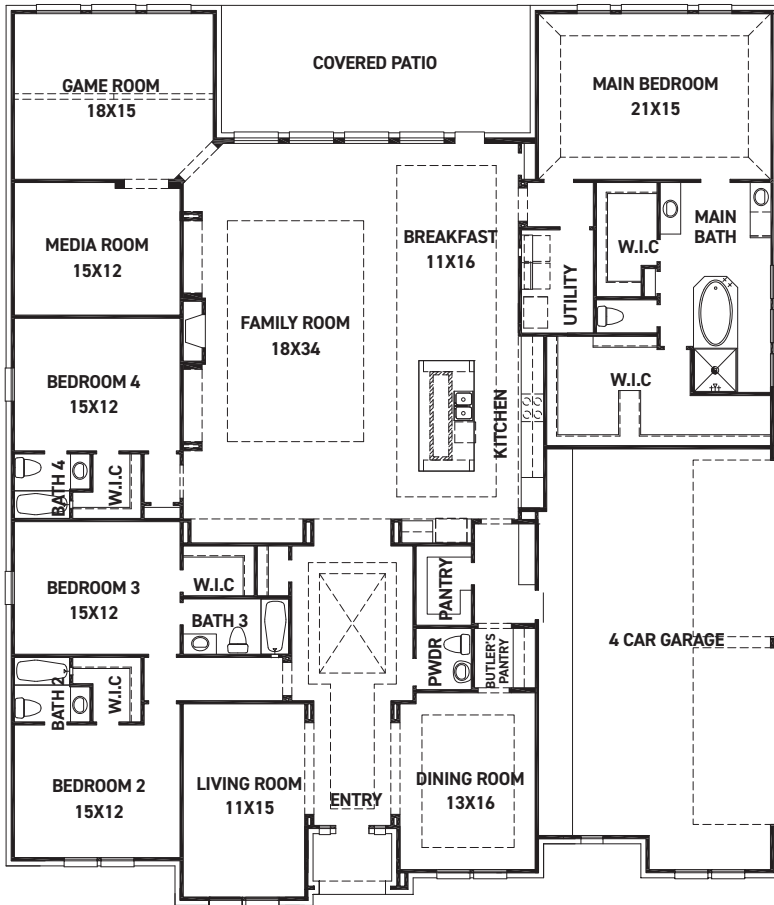
These drawings are conceptual only and are for the convenience of reference. They should not be relied upon as representations, express or implied, of the final detail of the residences. The builder expressly reserves the right to make modifications, revisions, and changes it deems desirable in its sole and absolute discretion. Dimensions and square footages are approximate and may vary with actual construction.



FEDRICK HARRIS
ESTATE HOMES



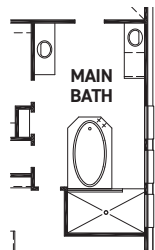
Villa Greenwich



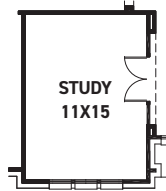
FIRST FLOOR PLAN

FEATURES:

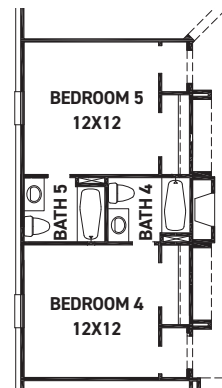
- 4,355 SQUARE FT.
- 4 BEDROOM
- 4 1/2 BATHROOM
- 4 CAR GARAGE



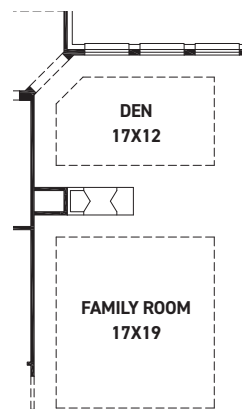
OPT. ENLARGED
MAIN SHOWER



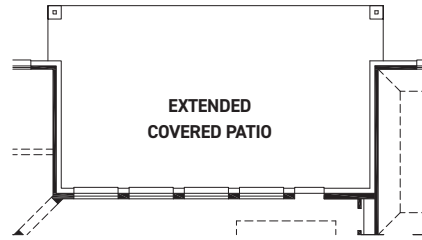
OPT. STUDY
@ LIVING



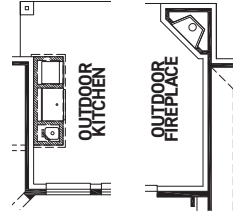
OPT. BEDROOM 5
W/ BATH 5



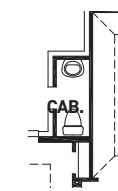
OPT. DEN W/
FIREPLACE



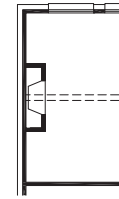
OPT. EXTENDED
COVERED PATIO



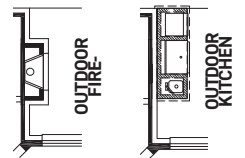
EXTENDED COVERED
PATIO OPTIONS



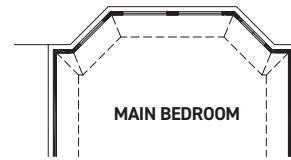
OPT. CABANA
BATH



OPT. GAMEROOM
FIREPLACE



COVERED PATIO OPTIONS



OPT. MAIN BEDROOM BAY



These drawings are conceptual only and are for the convenience of reference. They should not be relied upon as representations, express or implied, of the final detail of the residences. The builder expressly reserves the right to make modifications, revisions, and changes it deems desirable in its sole and absolute discretion. Dimensions and square footages are approximate and may vary with actual construction.



FEDRICK HARRIS
ESTATE HOMES

REV 02/23 (9017)