



Villa Greenwich



ELEVATION 6



ELEVATION 7



ELEVATION 8



ELEVATION 9

REV 2/22 (9017)



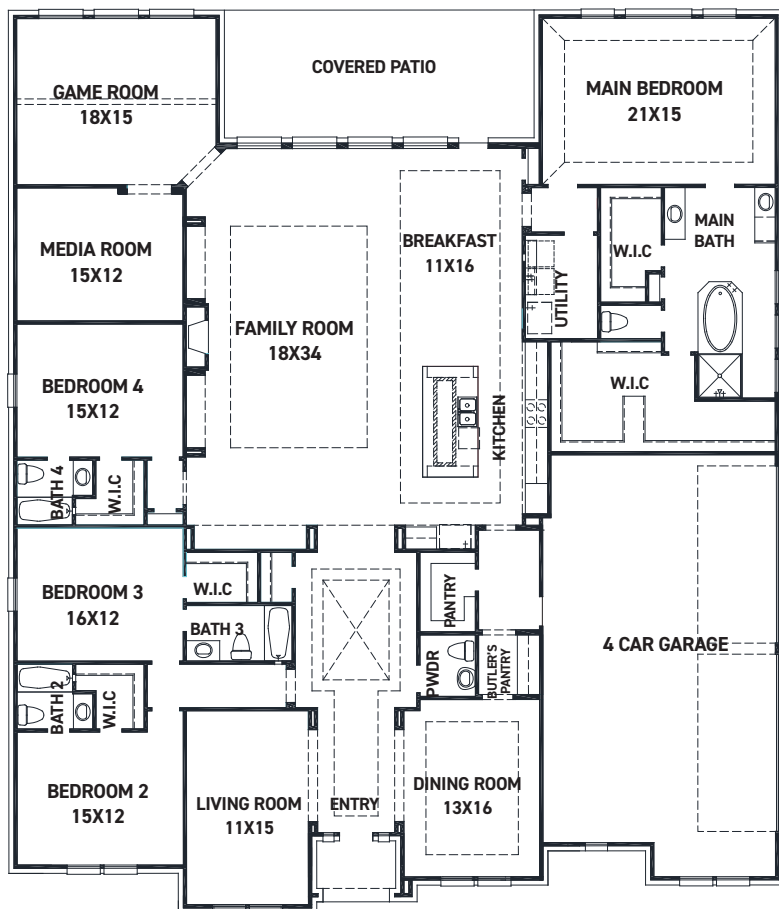
These drawings are conceptual only and are for the convenience of reference. They should not be relied upon as representations, express or implied, of the final detail of the residences. The builder expressly reserves the right to make modifications, revisions, and changes it deems desirable in its sole and absolute discretion. Dimensions and square footages are approximate and may vary with actual construction.



FEDRICK HARRIS
ESTATE HOMES



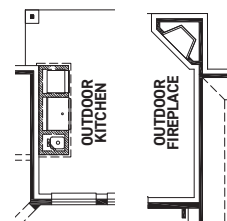
Villa Greenwich



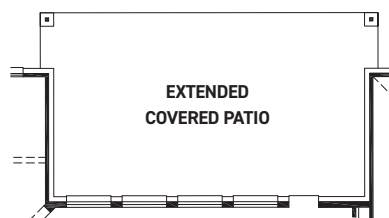
FIRST FLOOR PLAN

FEATURES:

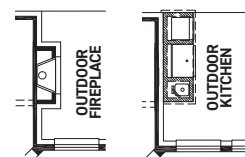
- 4,355 SQUARE FT.
- 4 BEDROOM
- 4 1/2 BATHROOM
- 4 CAR GARAGE



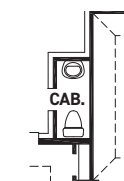
EXTENDED COVERED PATIO OPTIONS



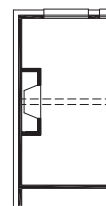
OPT. EXTENDED COVERED PATIO



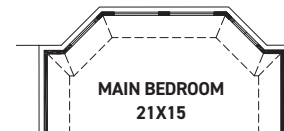
COVERED PATIO OPTIONS



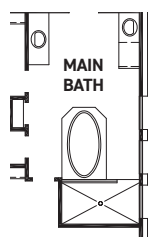
OPT. CABANA BATH



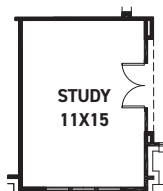
OPT. GAMEROOM FIREPLACE



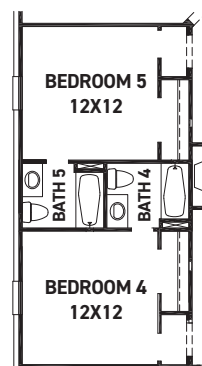
OPT. MAIN BEDROOM BAY



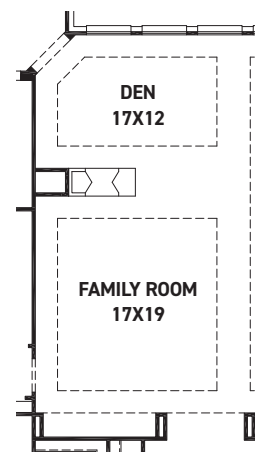
OPT. ENLARGED MAIN SHOWER



OPT. STUDY @ LIVING



OPT. BEDROOM 5 W/ BATH 5



OPT. DEN W/ FIREPLACE

REV 2/22 (9017)



These drawings are conceptual only and are for the convenience of reference. They should not be relied upon as representations, express or implied, of the final detail of the residences. The builder expressly reserves the right to make modifications, revisions, and changes it deems desirable in its sole and absolute discretion. Dimensions and square footages are approximate and may vary with actual construction.



FEDRICK HARRIS
ESTATE HOMES