



Koblenz



ELEVATION 1



ELEVATION 2



ELEVATION 3



ELEVATION 4



ELEVATION 5

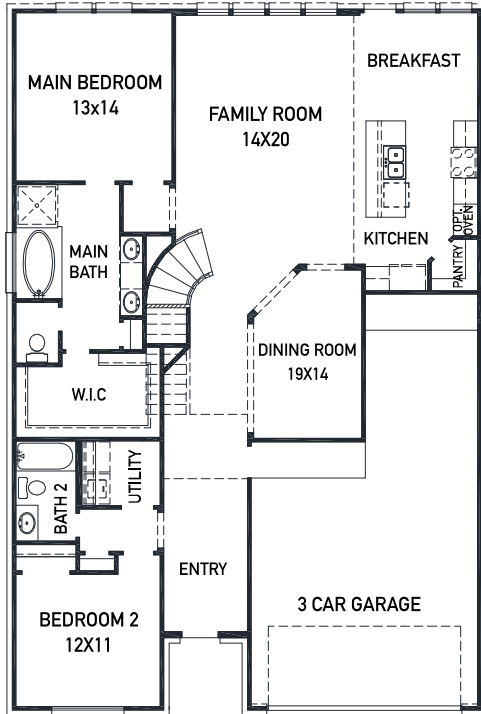
REV 8/20 (5016)



These drawings are conceptual only and are for the convenience of reference. They should not be relied upon as representations, express or implied, of the final detail of the residences. The builder expressly reserves the right to make modifications, revisions, and changes it deems desirable in its sole and absolute discretion. Dimensions and square footages are approximate and may vary with actual construction.



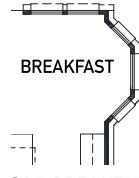
newmarkhomes.com



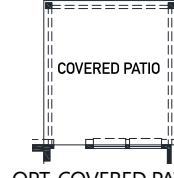
FIRST FLOOR PLAN



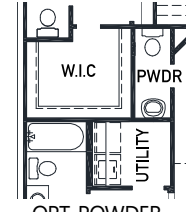
OPT. MAIN BAY



OPT. BREAKFAST BAY



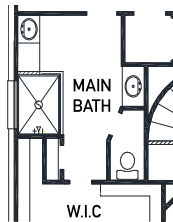
OPT. COVERED PATIO



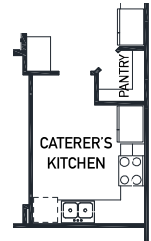
OPT. POWDER



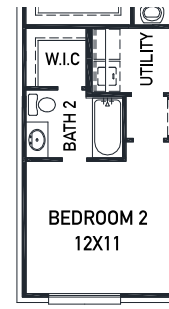
OPT. STUDY @ DINING



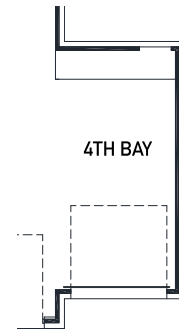
OPT. ENLARGED MAIN SHOWER
*NOT AVAIL W/ EXTENDED MAIN BATH



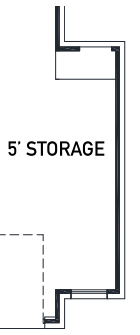
OPT. CATERER'S KITCHEN



OPT. ENSUITE @ BEDROOM 2 W/ POWDER



OPT. 4TH BAY



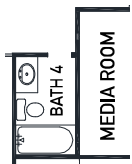
OPT. 5FT STORAGE

FEATURES:

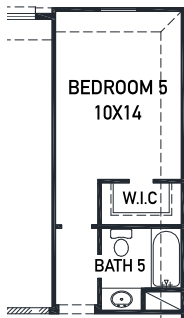
- 2,762 SQUARE FT.
- 4 BEDROOM
- 3 BATHROOM
- 3 CAR GARAGE



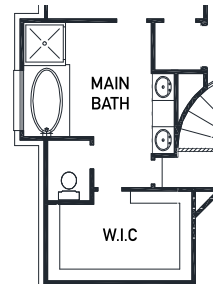
OPT. FIREPLACE



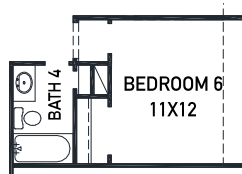
OPT. BATH 4



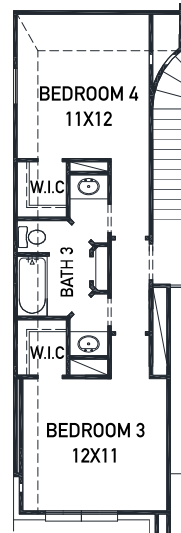
OPT. BEDROOM 5 W/ BATH 5



OPT. EXTENDED MAIN BATH



OPT. BEDROOM 6 W/ BATH 4



OPT. JACK & JILL



SECOND FLOOR PLAN

REV 8/20 (5016)



These drawings are conceptual only and are for the convenience of reference. They should not be relied upon as representations, express or implied, of the final detail of the residences. The builder expressly reserves the right to make modifications, revisions, and changes it deems desirable in its sole and absolute discretion. Dimensions and square footages are approximate and may vary with actual construction.