



**ELEVATION 1**



**ELEVATION 3**



**ELEVATION 5**



**ELEVATION 6**



**ELEVATION 7**



**ELEVATION 8**



**ELEVATION 9**

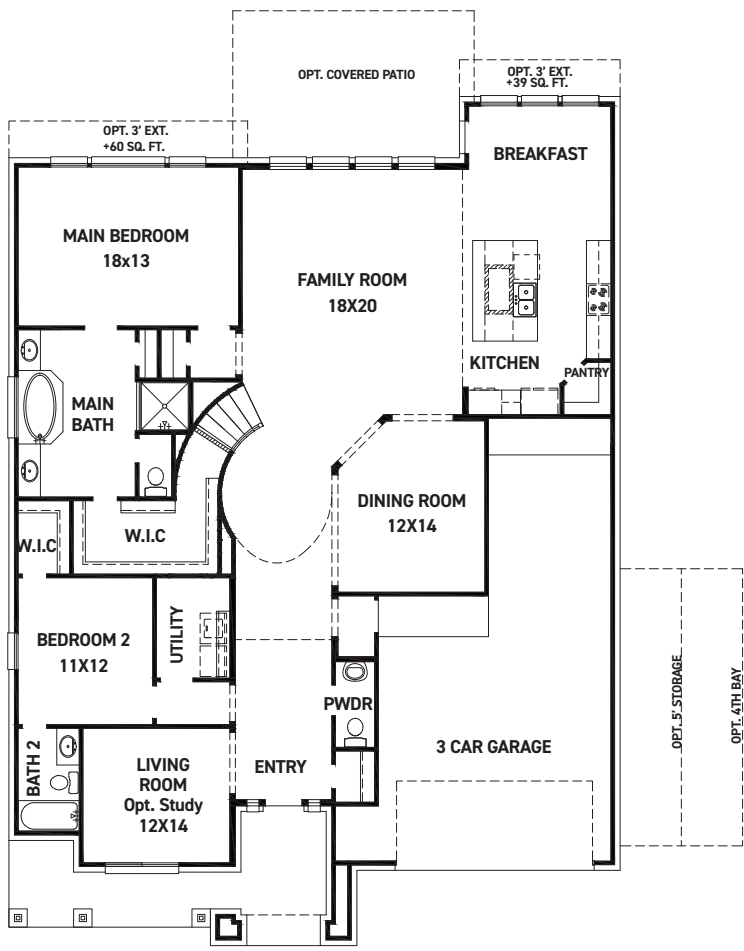
REV 04/24 (6029)



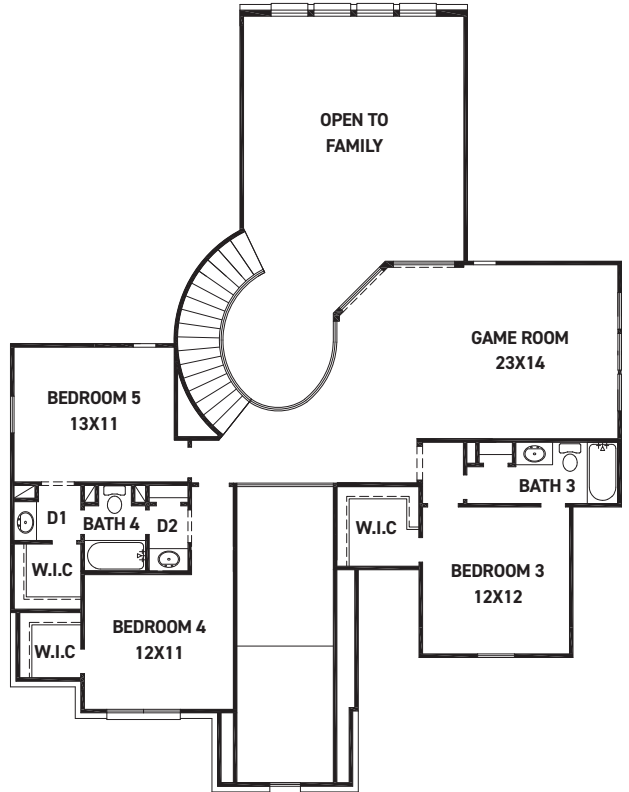
These drawings are conceptual only and are for the convenience of reference. They should not be relied upon as representations, express or implied, of the final detail of the residences. The builder expressly reserves the right to make modifications, revisions, and changes it deems desirable in its sole and absolute discretion. Dimensions and square footages are approximate and may vary with actual construction. Due to design and footage requirements not all options/elevations are available in all locations.



# Murano



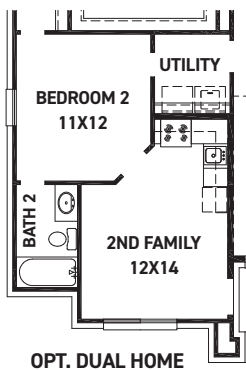
FIRST FLOOR PLAN



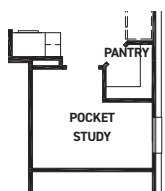
SECOND FLOOR PLAN

## FEATURES:

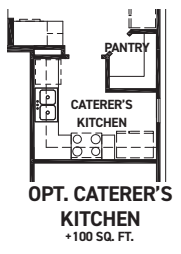
- 3,532 SQUARE FT.
- 5 BEDROOM
- 4 1/2 BATHROOM
- 3 CAR GARAGE



OPT. DUAL HOME



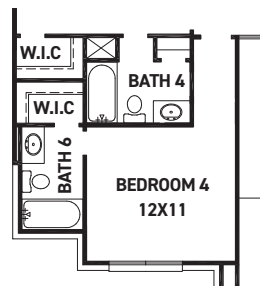
OPT. POCKET STUDY  
+100 SQ. FT.



OPT. CATERER'S KITCHEN  
+100 SQ. FT.



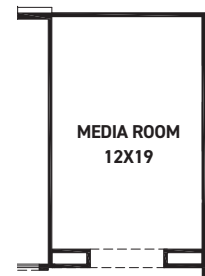
OPT. FIREPLACE



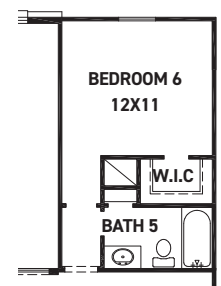
OPT. BATH 6



OPT. POWDER #2



OPT. MEDIA ROOM  
+253 SQ. FT.



OPT. BEDROOM 6  
W/ BATH 5  
+253 SQ. FT.

REV 04/24 (6029)



These drawings are conceptual only and are for the convenience of reference. They should not be relied upon as representations, express or implied, of the final detail of the residences. The builder expressly reserves the right to make modifications, revisions, and changes it deems desirable in its sole and absolute discretion. Dimensions and square footages are approximate and may vary with actual construction. Due to design and footage requirements not all options/elevations are available in all locations.



[newmarkhomes.com](http://newmarkhomes.com)