



**ELEVATION 1**



**ELEVATION 2**



**ELEVATION 3**



**ELEVATION 4**



**ELEVATION 5**

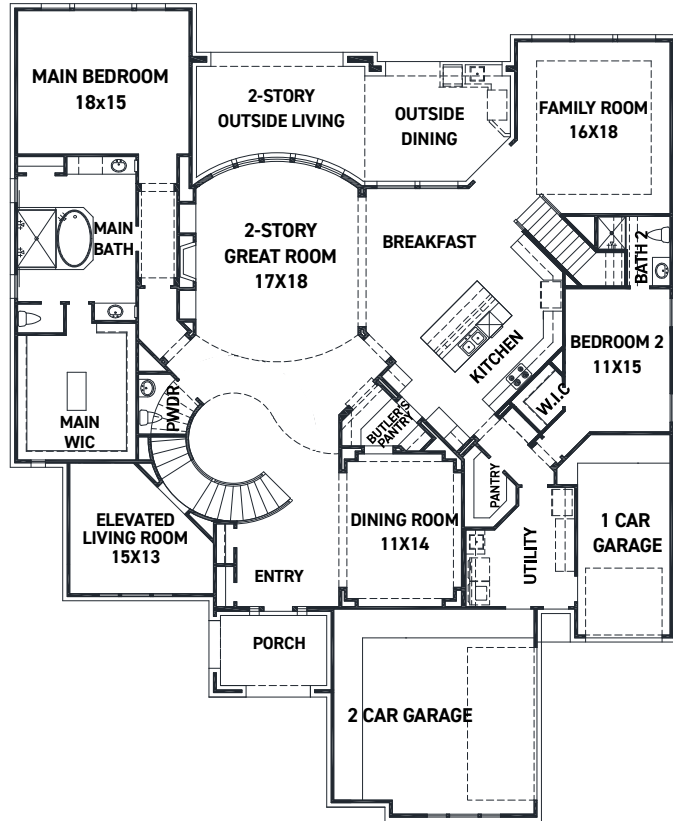
REV 8/21 (8013)



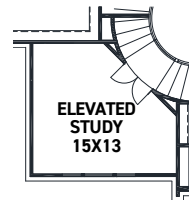
These drawings are conceptual only and are for the convenience of reference. They should not be relied upon as representations, express or implied, of the final detail of the residences. The builder expressly reserves the right to make modifications, revisions, and changes it deems desirable in its sole and absolute discretion. Dimensions and square footages are approximate and may vary with actual construction.



[newmarkhomes.com](http://newmarkhomes.com)



OPT. WINE ROOM



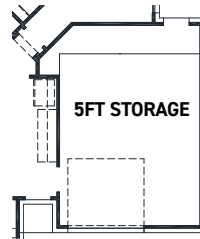
OPT. STUDY @ LIVING



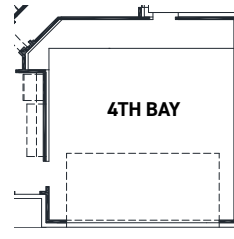
OPT. BAY @ MAIN BEDROOM



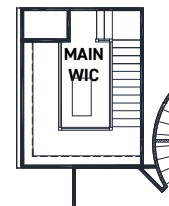
OPT. EXTENDED MAIN BEDROOM



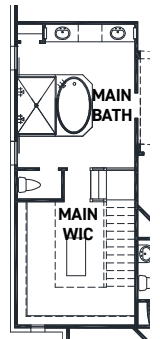
OPT. 5FT STORAGE



OPT. 4TH BAY



OPT. 2 STORY MAIN CLOSET 2ND FLOOR

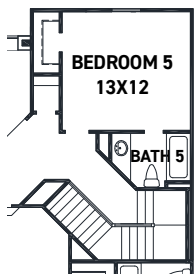


OPT. 2 STORY MAIN CLOSET

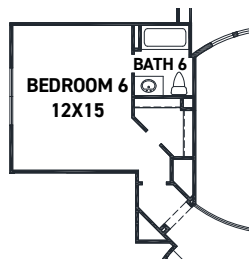
## FIRST FLOOR PLAN

### FEATURES:

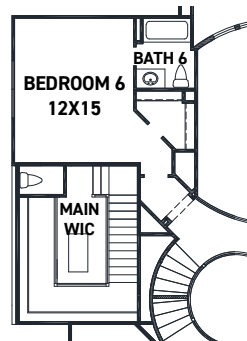
- 5,307 SQUARE FT.
- 4 BEDROOM
- 4 1/2 BATHROOM
- 3 CAR GARAGE



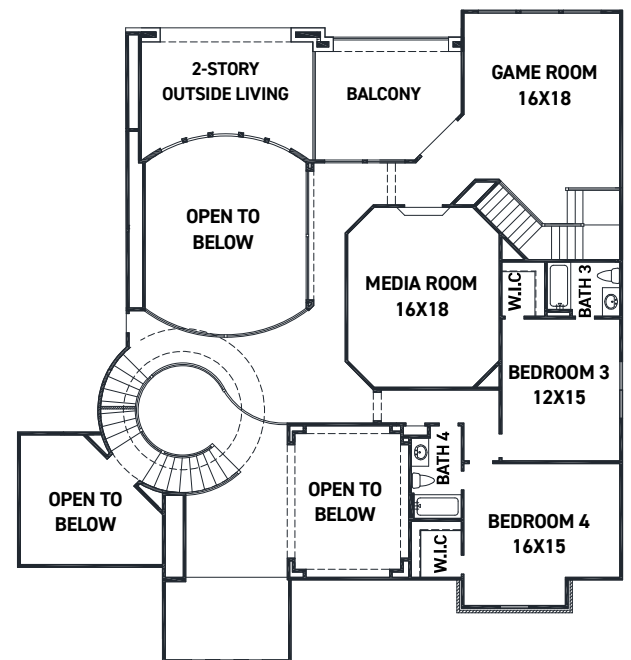
OPT. BEDROOM 5 W/ BATH 5



OPT. BEDROOM 6 W/ BATH 6



OPT. BEDROOM 6/BATH 6 W/ OPT. 2 STORY MAIN CLOSET



## SECOND FLOOR PLAN

REV 8/21 (8013)



These drawings are conceptual only and are for the convenience of reference. They should not be relied upon as representations, express or implied, of the final detail of the residences. The builder expressly reserves the right to make modifications, revisions, and changes it deems desirable in its sole and absolute discretion. Dimensions and square footages are approximate and may vary with actual construction.