



# Villa Rialto



**ELEVATION 1**



**ELEVATION 2**



**ELEVATION 3**



**ELEVATION 4**



**ELEVATION 5**

REV 09/23 (9019)



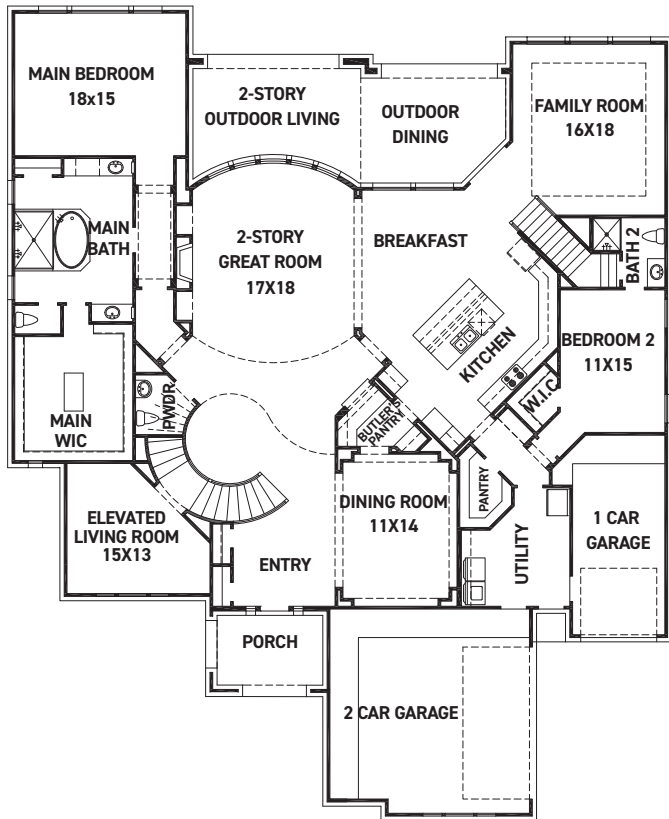
These drawings are conceptual only and are for the convenience of reference. They should not be relied upon as representations, express or implied, of the final detail of the residences. The builder expressly reserves the right to make modifications, revisions, and changes it deems desirable in its sole and absolute discretion. Dimensions and square footages are approximate and may vary with actual construction. Due to design and footage requirements not all options/elevations are available in all locations.



**FEDRICK HARRIS**  
ESTATE HOMES



# Villa Rialto



FIRST FLOOR PLAN

## FEATURES:

- 5,307 SQUARE FT.
- 4 BEDROOM
- 4 1/2 BATHROOM
- 3 CAR GARAGE



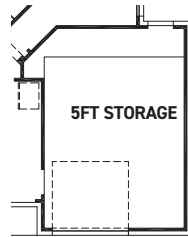
OPT. STUDY  
@ LIVING



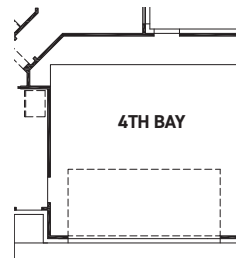
OPT. BAY @ MAIN  
BEDROOM  
+41 SQ. FT.



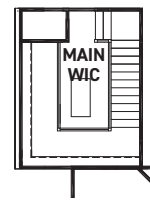
OPT. EXTENDED MAIN  
BEDROOM  
+59 SQ. FT.



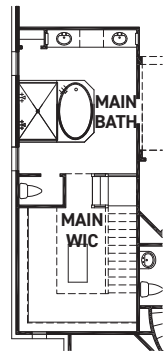
OPT. 5FT STORAGE



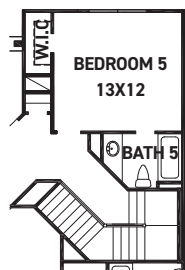
OPT. 4TH BAY



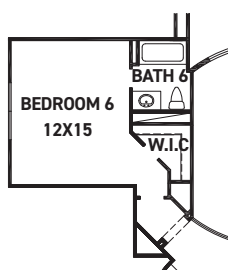
OPT. 2 STORY  
MAIN CLOSET  
2ND FLOOR  
+163 SQ. FT.



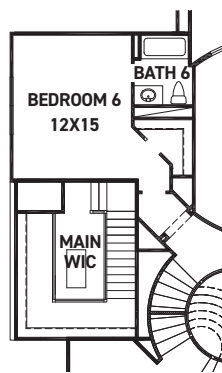
OPT. 2 STORY  
MAIN CLOSET



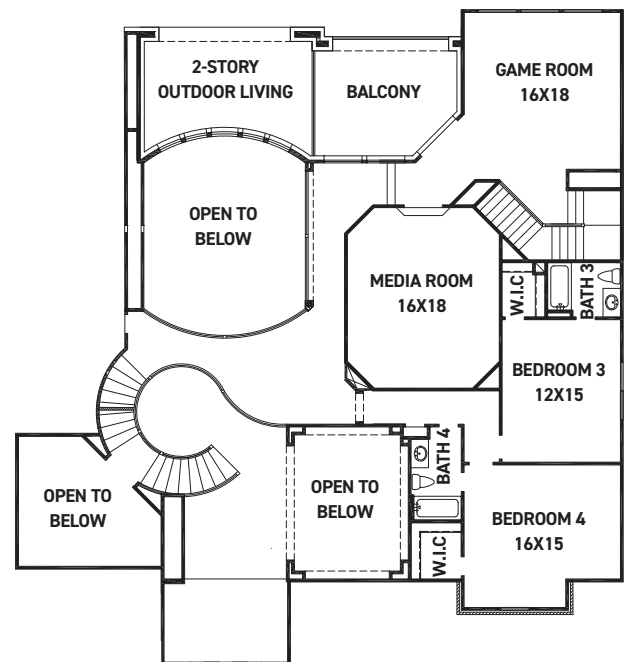
OPT. BEDROOM 5  
W/ BATH 5



OPT. BEDROOM 6  
W/ BATH 6  
+298 SQ. FT.



OPT. BEDROOM 6/BATH 6  
W/ OPT. 2 STORY MAIN CLOSET  
+298 SQ. FT.



SECOND FLOOR PLAN

REV 09/23 (9019)



These drawings are conceptual only and are for the convenience of reference. They should not be relied upon as representations, express or implied, of the final detail of the residences. The builder expressly reserves the right to make modifications, revisions, and changes it deems desirable in its sole and absolute discretion. Dimensions and square footages are approximate and may vary with actual construction. Due to design and footage requirements not all options/elevations are available in all locations.



FEDRICK HARRIS  
ESTATE HOMES