



# San Sebastian



**ELEVATION 1**



**ELEVATION 3**



**ELEVATION 4**



**ELEVATION 5**



**ELEVATION 6**



**ELEVATION 7**

REV 06/24 (7014)



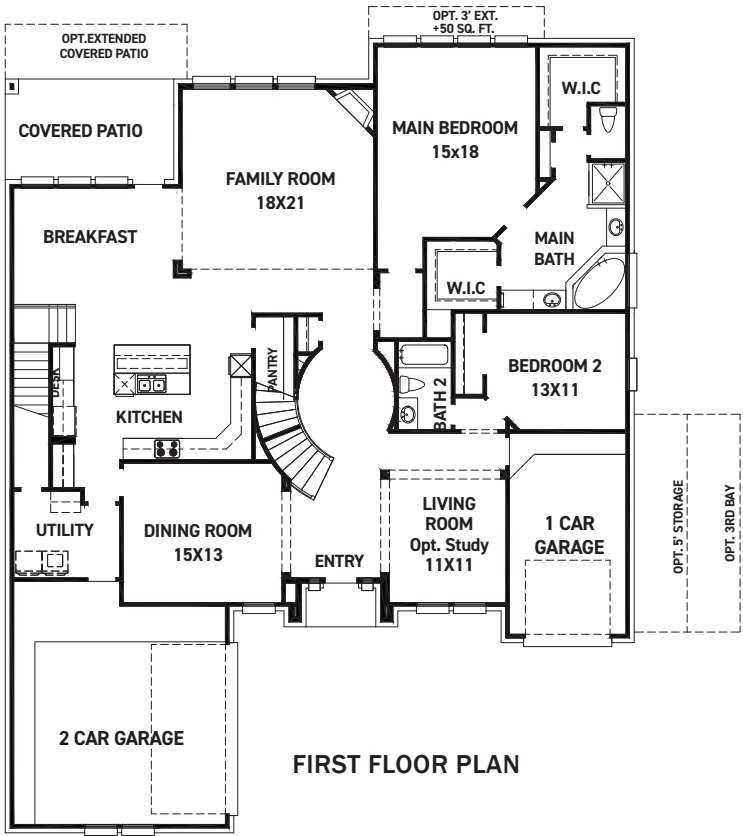
These drawings are conceptual only and are for the convenience of reference. They should not be relied upon as representations, express or implied, of the final detail of the residences. The builder expressly reserves the right to make modifications, revisions, and changes it deems desirable in its sole and absolute discretion. Dimensions and square footages are approximate and may vary with actual construction. Due to design and footage requirements not all options/elevations are available in all locations.



[newmarkhomes.com](http://newmarkhomes.com)

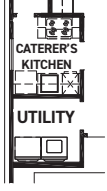


# San Sebastian

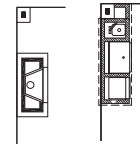


## FEATURES:

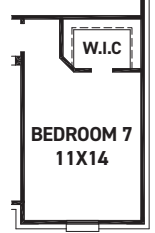
- 4,227 SQUARE FT.
- 5 BEDROOM
- 4 BATHROOM
- 3 CAR GARAGE



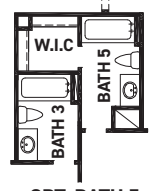
**OPT. CATERER'S KITCHEN**  
+36 SQ. FT.



**OPT. FIREPLACE & OPT. KITCHEN @ EXTENDED COVERED PATIO**



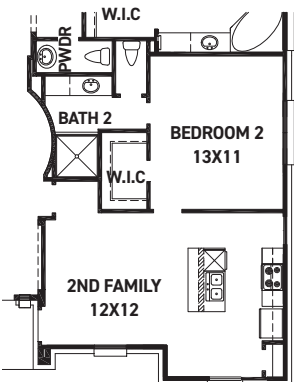
**OPT. BEDROOM 7 @ 1 CAR GARAGE**  
+240 SQ. FT.



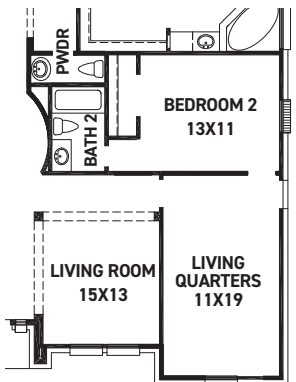
**OPT. BATH 5**



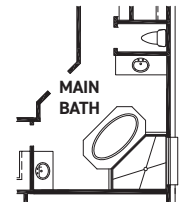
**OPT. BEDROOM 8 @ LIVING**



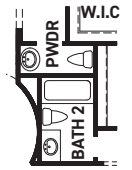
**OPT. DUAL HOME**  
+240 SQ. FT.



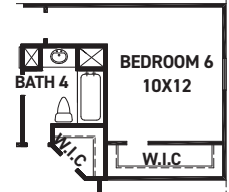
**OPT. LIVING QUARTERS**  
+240 SQ. FT.



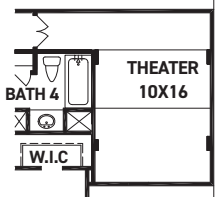
**OPT. ENLARGED MAIN SHOWER**



**OPT. POWDER**



**OPT. BEDROOM 6 ILO MEDIA ROOM**



**OPT. THEATER ILO MEDIA ROOM**

REV 06/24 (7014)



These drawings are conceptual only and are for the convenience of reference. They should not be relied upon as representations, express or implied, of the final detail of the residences. The builder expressly reserves the right to make modifications, revisions, and changes it deems desirable in its sole and absolute discretion. Dimensions and square footages are approximate and may vary with actual construction. Due to design and footage requirements not all options/elevations are available in all locations.



[newmarkhomes.com](http://newmarkhomes.com)