



# Siena



**ELEVATION 1**



**ELEVATION 2**



**ELEVATION 3**



**ELEVATION 4**



**ELEVATION 5**



**ELEVATION 6**

REV 04/24 (6042)



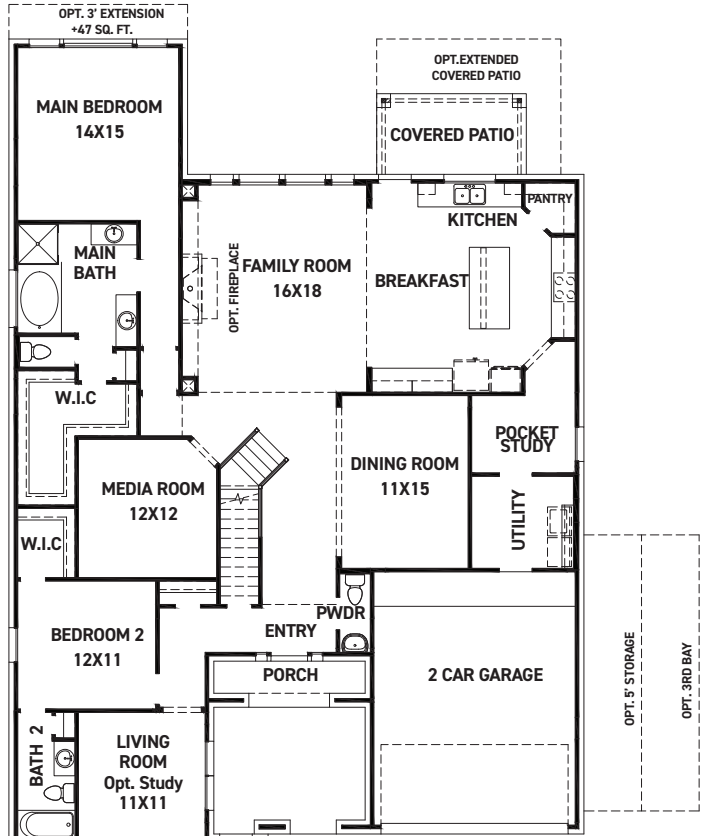
These drawings are conceptual only and are for the convenience of reference. They should not be relied upon as representations, express or implied, of the final detail of the residences. The builder expressly reserves the right to make modifications, revisions, and changes it deems desirable in its sole and absolute discretion. Dimensions and square footages are approximate and may vary with actual construction. Due to design and footage requirements not all options/elevations are available in all locations.



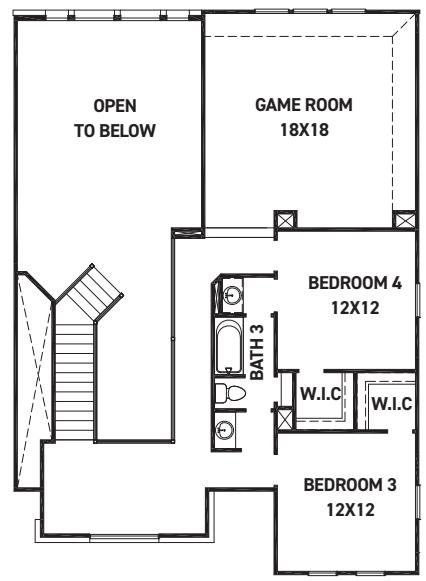
[newmarkhomes.com](http://newmarkhomes.com)



# Siena



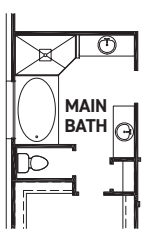
FIRST FLOOR PLAN



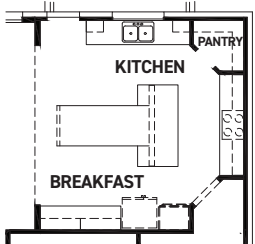
SECOND FLOOR PLAN

### FEATURES:

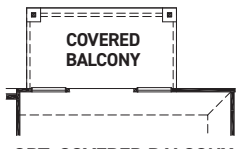
- 3,423 SQUARE FT.
- 4 BEDROOM
- 3 1/2 BATHROOMS
- 3 CAR SPLIT GARAGE



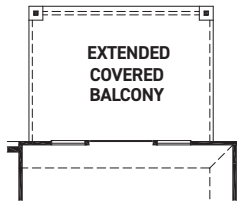
OPT. ENLARGED MAIN SHOWER



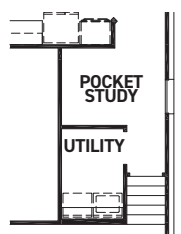
OPT. WATERFALL EDGE END TABLE @ BREAKFAST



OPT. COVERED BALCONY



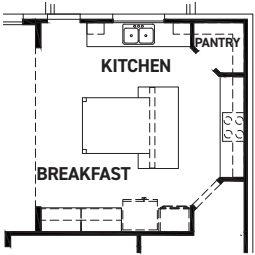
OPT. EXTENDED COVERED BALCONY (ONLY W/EXT. COVERED PATIO)



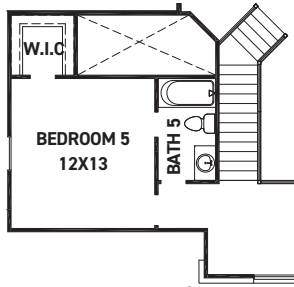
OPT. 3' DROP GARAGE



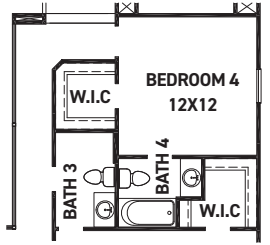
OPT. SLIDER DOOR @ LIVING



OPT. TABLE LEG END TABLE @ BREAKFAST



OPT. BEDROOM 5/ BATH 5 +282 SQ. FT.



OPT. BATH 4

REV 04/24 (6042)



These drawings are conceptual only and are for the convenience of reference. They should not be relied upon as representations, express or implied, of the final detail of the residences. The builder expressly reserves the right to make modifications, revisions, and changes it deems desirable in its sole and absolute discretion. Dimensions and square footages are approximate and may vary with actual construction. Due to design and footage requirements not all options/elevations are available in all locations.



[newmarkhomes.com](http://newmarkhomes.com)