



# Strasburg



**ELEVATION 1**



**ELEVATION 2**



**ELEVATION 3**



**ELEVATION 4**



**ELEVATION 5**

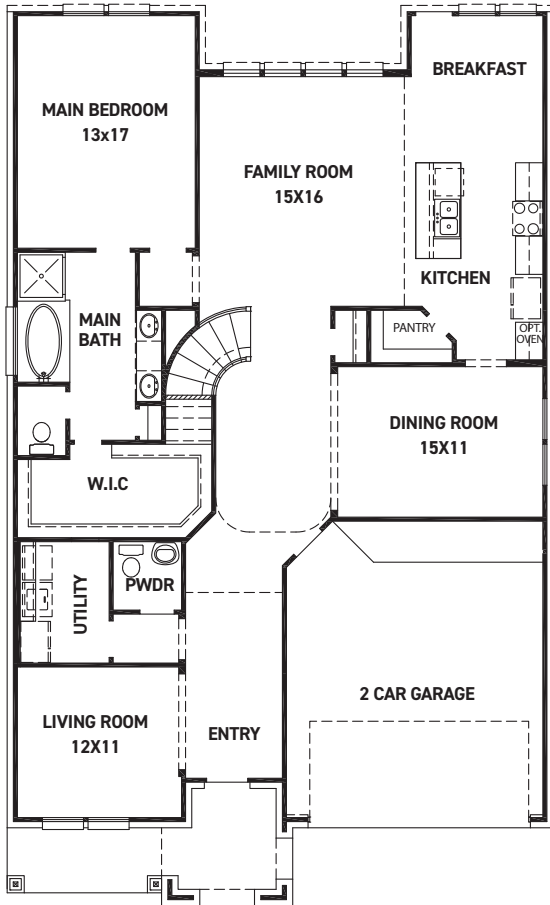
REV 02/23(5011)



These drawings are conceptual only and are for the convenience of reference. They should not be relied upon as representations, express or implied, of the final detail of the residences. The builder expressly reserves the right to make modifications, revisions, and changes it deems desirable in its sole and absolute discretion. Dimensions and square footages are approximate and may vary with actual construction.



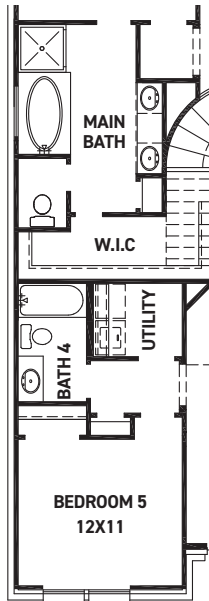
[newmarkhomes.com](http://newmarkhomes.com)



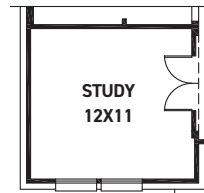
FIRST FLOOR PLAN

FEATURES:

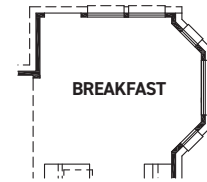
- 2,899 SQUARE FT.
- 4 BEDROOM
- 3 1/2 BATHROOM
- 2 CAR GARAGE



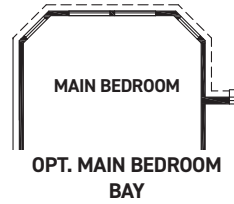
OPT. BEDROOM 5 W/ BATH 4



OPT. STUDY @ LIVING



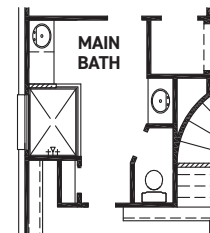
OPT. BREAKFAST BAY



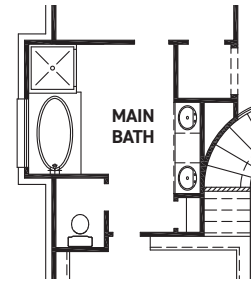
OPT. MAIN BEDROOM BAY



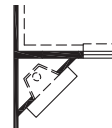
OPT. COVERED PATIO



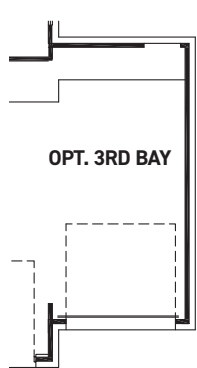
OPT. ENLARGED MAIN SHOWER  
\*NOT AVAIL. W/ EXTENDED MAIN BATH



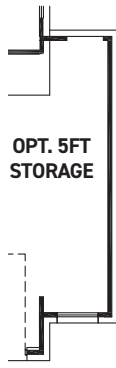
OPT. EXTENDED MAIN BATH



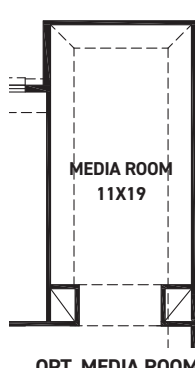
OPT. FIREPLACE



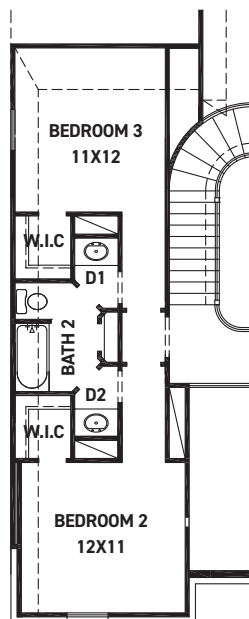
OPT. 3RD BAY



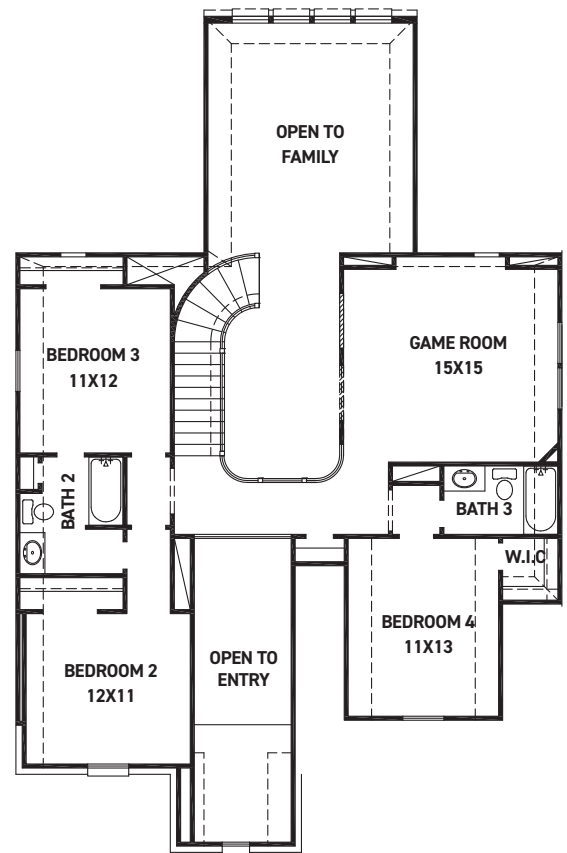
OPT. 5FT STORAGE



OPT. MEDIA ROOM



OPT. JACK & JILL



SECOND FLOOR PLAN

REV 02/23(5011)



These drawings are conceptual only and are for the convenience of reference. They should not be relied upon as representations, express or implied, of the final detail of the residences. The builder expressly reserves the right to make modifications, revisions, and changes it deems desirable in its sole and absolute discretion. Dimensions and square footages are approximate and may vary with actual construction.