



Victoria



ELEVATION 3



ELEVATION 6



ELEVATION 7



ELEVATION 8



ELEVATION 11



ELEVATION 12



ELEVATION 13

REV 08/24 (6027)



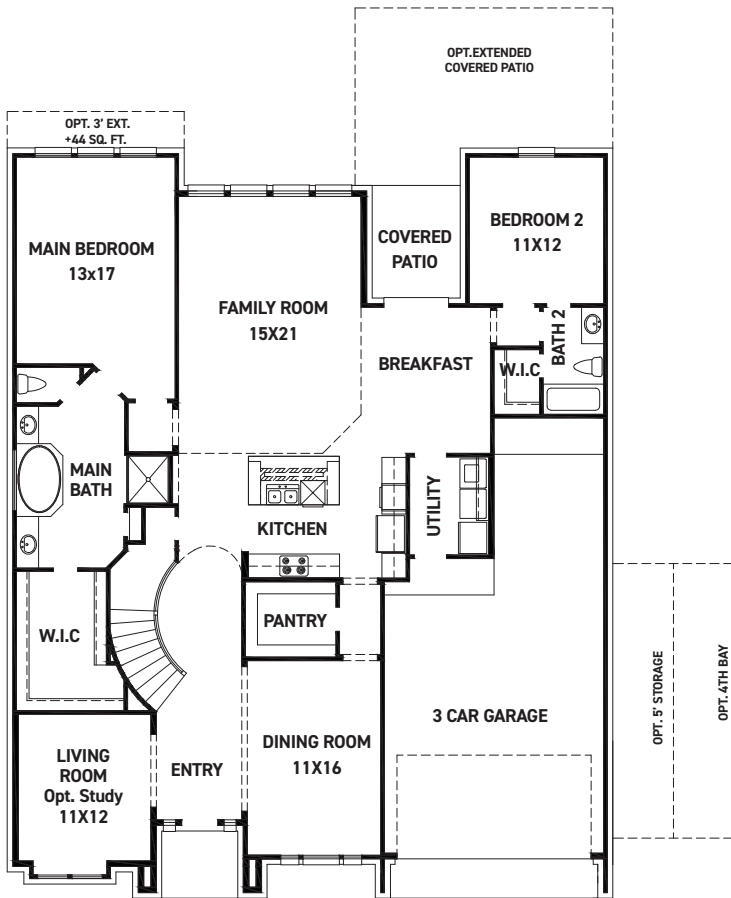
These drawings are conceptual only and are for the convenience of reference. They should not be relied upon as representations, express or implied, of the final detail of the residences. The builder expressly reserves the right to make modifications, revisions, and changes it deems desirable in its sole and absolute discretion. Dimensions and square footages are approximate and may vary with actual construction. Due to design and footage requirements not all options/elevations are available in all locations.



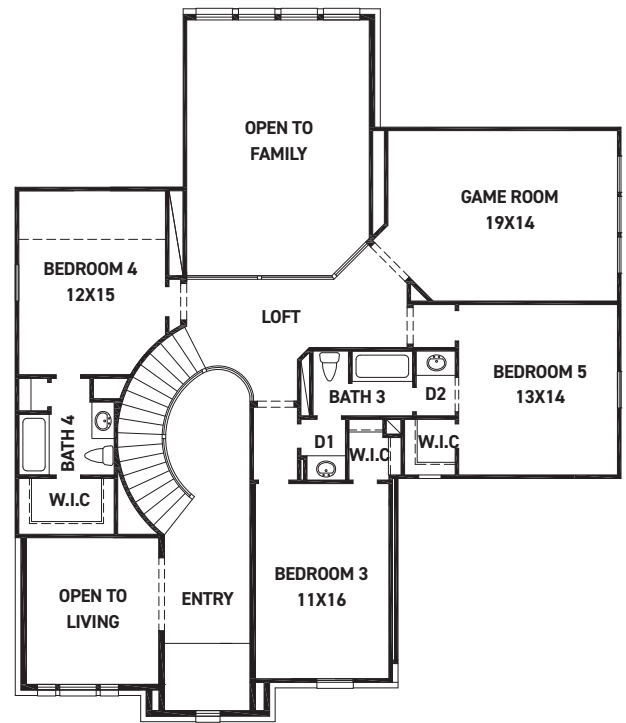
newmarkhomes.com



Victoria



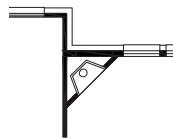
FIRST FLOOR PLAN



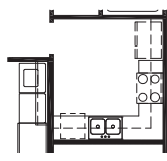
SECOND FLOOR PLAN

FEATURES:

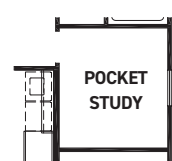
- 3,569 SQUARE FT.
- 5 BEDROOM
- 4 BATHROOM
- 3 CAR GARAGE



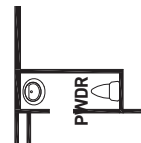
OPT. FIREPLACE



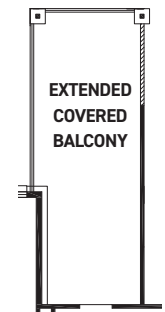
OPT. CATERER'S KITCHEN +93 SQ. FT.



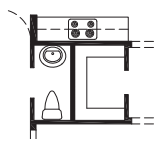
OPT. POCKET STUDY +93 SQ. FT.



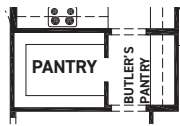
OPT. POWDER ROOM +28 SQ. FT.



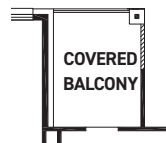
OPT. EXTENDED COVERED BALCONY



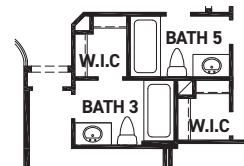
OPT. POWDER



OPT. BUTLER'S PANTRY



OPT. COVERED BALCONY



OPT. BATH 5



OPT. MEDIA ROOM +161 SQ. FT.

REV 08/24 (6027)



These drawings are conceptual only and are for the convenience of reference. They should not be relied upon as representations, express or implied, of the final detail of the residences. The builder expressly reserves the right to make modifications, revisions, and changes it deems desirable in its sole and absolute discretion. Dimensions and square footages are approximate and may vary with actual construction. Due to design and footage requirements not all options/elevations are available in all locations.



newmarkhomes.com