



# Villa Carmel



**ELEVATION 1**



**ELEVATION 2**



**ELEVATION 3**

REV 8/21 (9015)



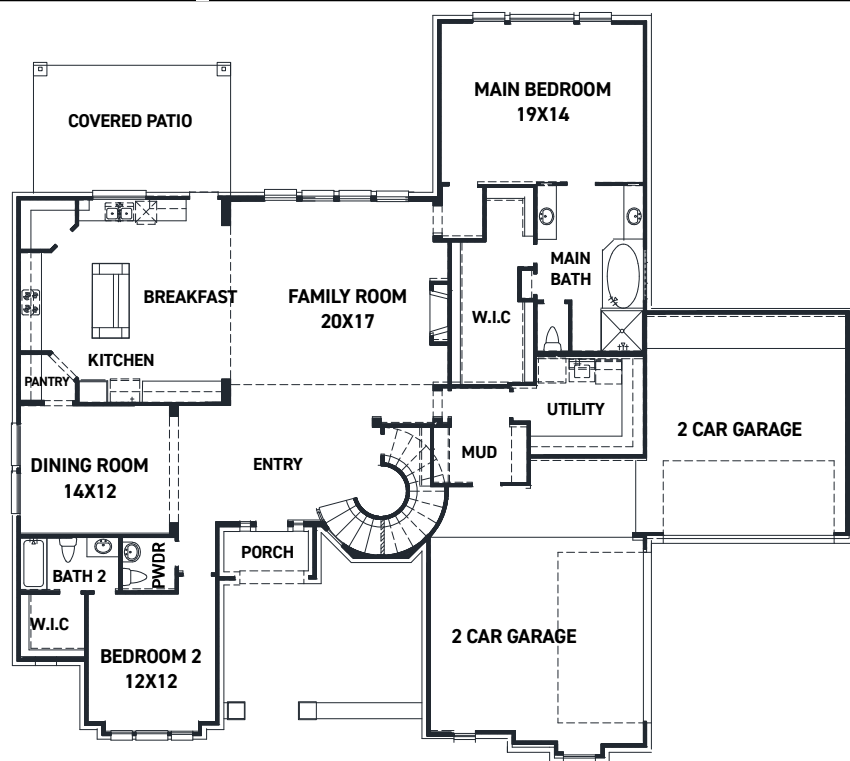
These drawings are conceptual only and are for the convenience of reference. They should not be relied upon as representations, express or implied, of the final detail of the residences. The builder expressly reserves the right to make modifications, revisions, and changes it deems desirable in its sole and absolute discretion. Dimensions and square footages are approximate and may vary with actual construction.



**FEDRICK HARRIS**  
ESTATE HOMES



# Villa Carmel



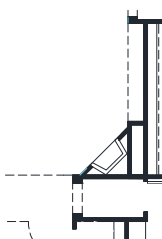
FIRST FLOOR PLAN

## FEATURES:

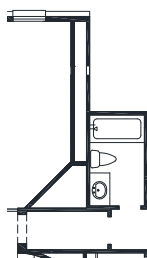
- 3,796 SQUARE FT.
- 4 BEDROOM
- 4 1/2 BATHROOM
- 4 CAR GARAGE



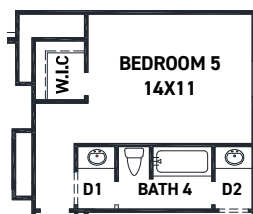
OPT. BEDROOM 5  
W/ BATH 5



OPT. CORNER  
FIREPLACE



OPT. CORNER  
FIREPLACE 2ND  
FLOOR



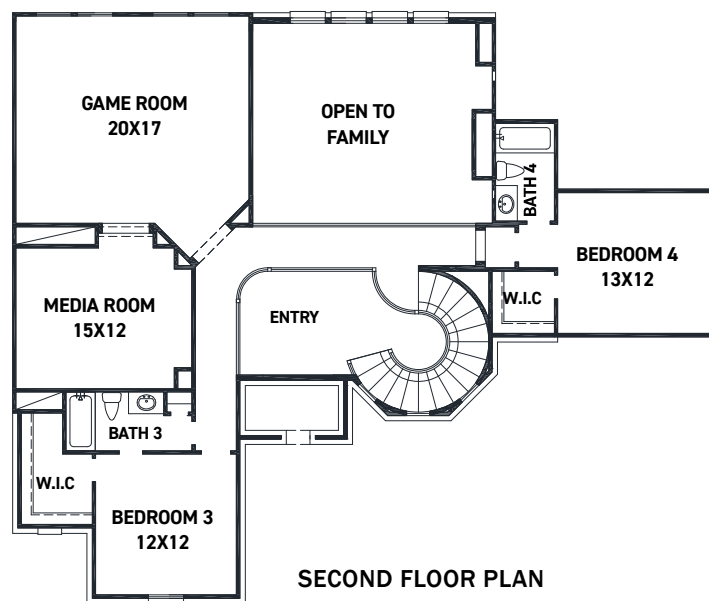
OPT. BEDROOM 5



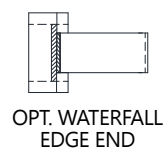
OPT. THEATER



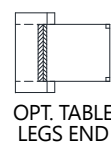
OPT. BEDROOM 6



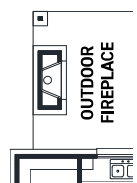
SECOND FLOOR PLAN



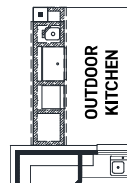
OPT. WATERFALL  
EDGE END



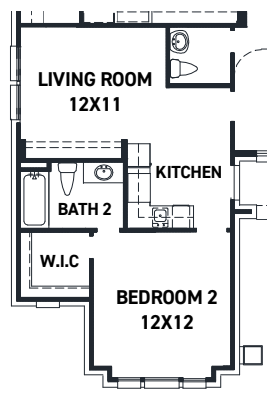
OPT. TABLE  
LEGS END



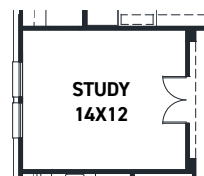
COVERED PATIO OPTIONS



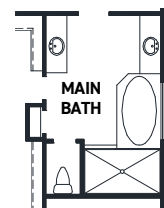
OPT. OUTDOOR  
KITCHEN



OPT. DUAL HOME



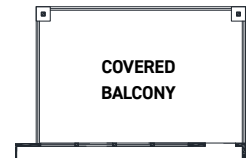
OPT. STUDY  
@ LIVING



OPT. ENLARGED  
MAIN SHOWER



OPT. MAIN BEDROOM  
BAY



OPT. COVERED BALCONY



OPT. COURTYARD  
FIREPLACE

REV 8/21 (9015)



These drawings are conceptual only and are for the convenience of reference. They should not be relied upon as representations, express or implied, of the final detail of the residences. The builder expressly reserves the right to make modifications, revisions, and changes it deems desirable in its sole and absolute discretion. Dimensions and square footages are approximate and may vary with actual construction.



FEDRICK HARRIS  
ESTATE HOMES