



# Villa Edinburgh



**ELEVATION 1**



**ELEVATION 2**



**ELEVATION 3**

REV 2/21 (9013)



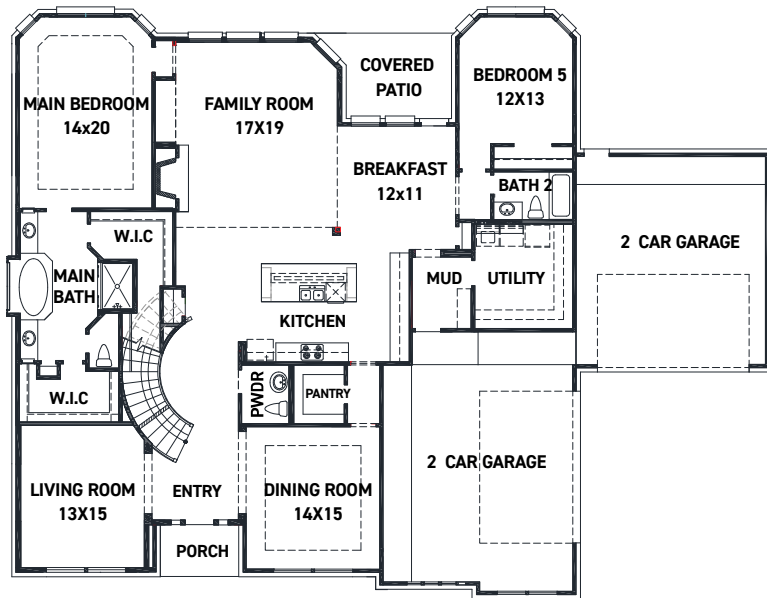
These drawings are conceptual only and are for the convenience of reference. They should not be relied upon as representations, express or implied, of the final detail of the residences. The builder expressly reserves the right to make modifications, revisions, and changes it deems desirable in its sole and absolute discretion. Dimensions and square footages are approximate and may vary with actual construction.



**FEDRICK HARRIS**  
ESTATE HOMES



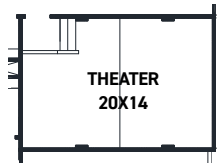
# Villa Edinburgh



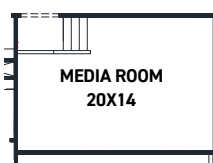
FIRST FLOOR PLAN

## FEATURES:

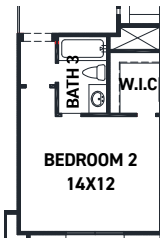
- 4,578 SQUARE FT.
- 5 BEDROOM
- 4 1/2 BATHROOM
- 4 CAR GARAGE



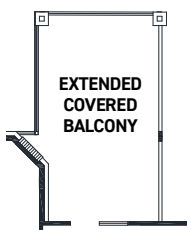
OPT. THEATER



OPT. MEDIA ROOM



OPT. ENSUITE  
BEDROOM 2



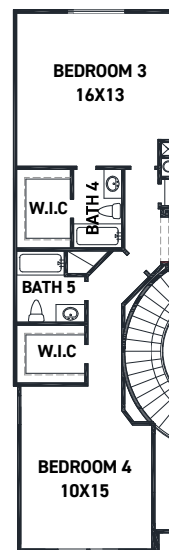
OPT. EXTENDED  
COVERED BALCONY



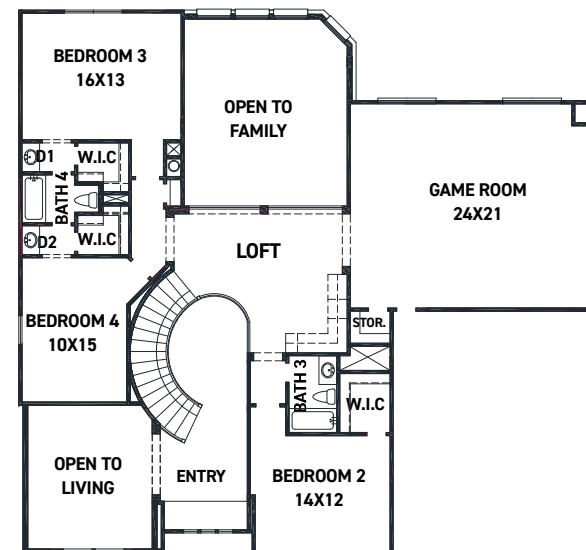
OPT. WET BAR



OPT. BATH 5



OPT. ENLARGED  
BEDROOMS 3 & 4  
W/ BATH 5



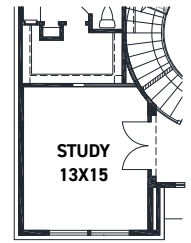
SECOND FLOOR PLAN



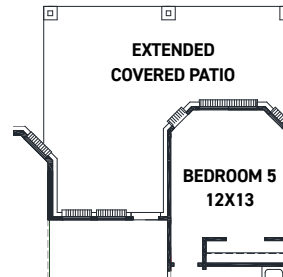
OPT. COVERED  
BALCONY



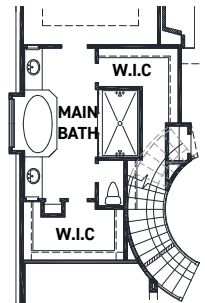
OPT. COVERED PATIO W/  
BALCONY



OPT. STUDY  
@ LIVING



OPT. EXTENDED  
COVERED PATIO



OPT. ENLARGED  
MAIN SHOWER

REV 2/21 (9013)



These drawings are conceptual only and are for the convenience of reference. They should not be relied upon as representations, express or implied, of the final detail of the residences. The builder expressly reserves the right to make modifications, revisions, and changes it deems desirable in its sole and absolute discretion. Dimensions and square footages are approximate and may vary with actual construction.



FEDRICK HARRIS  
ESTATE HOMES