



# Villa Florentino



**ELEVATION 1**



**ELEVATION 2**



**ELEVATION 3**



**ELEVATION 4**



**ELEVATION 5**



**ELEVATION 6**



**ELEVATION 7**



**ELEVATION 8**

REV 02/23 (9016)



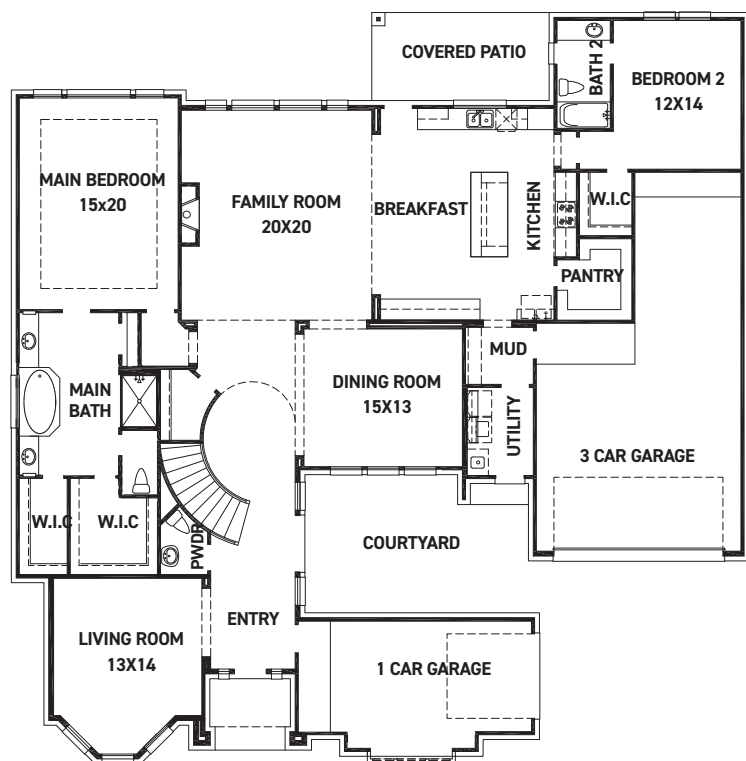
These drawings are conceptual only and are for the convenience of reference. They should not be relied upon as representations, express or implied, of the final detail of the residences. The builder expressly reserves the right to make modifications, revisions, and changes it deems desirable in its sole and absolute discretion. Dimensions and square footages are approximate and may vary with actual construction.



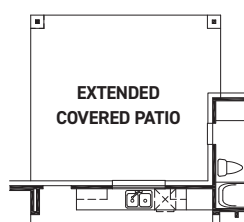
**FEDRICK HARRIS**  
ESTATE HOMES



# Villa Florentino



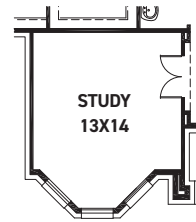
FIRST FLOOR PLAN



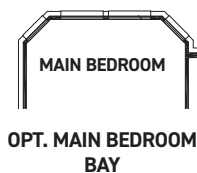
OPT. EXTENDED COVERED PATIO



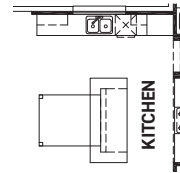
EXTENDED COVERED PATIO OPTIONS



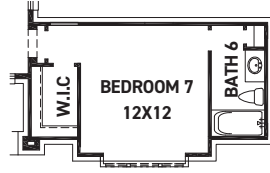
OPT. STUDY @ LIVING



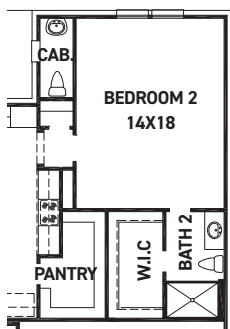
OPT. MAIN BEDROOM BAY



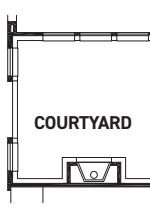
OPT. TABLE @ BREAKFAST



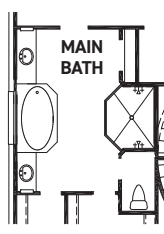
OPT. BEDROOM 7



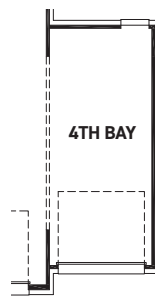
OPT. ENLARGED BEDROOM 2



OPT. FIREPLACE @ COURTYARD



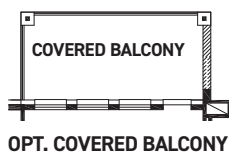
OPT. EXTENDED MAIN SHOWER



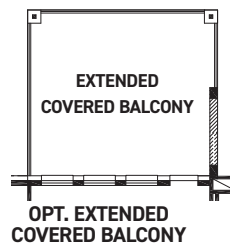
OPT. 4TH BAY @ 3 CAR GARAGE

## FEATURES:

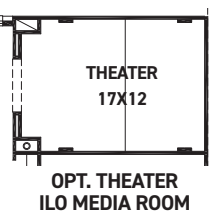
- 4,744 SQUARE FT.
- 5 BEDROOM
- 4 1/2 BATHROOM
- 4 CAR GARAGE



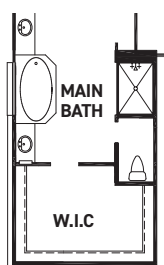
OPT. COVERED BALCONY



OPT. EXTENDED COVERED BALCONY



OPT. THEATER ILO MEDIA ROOM



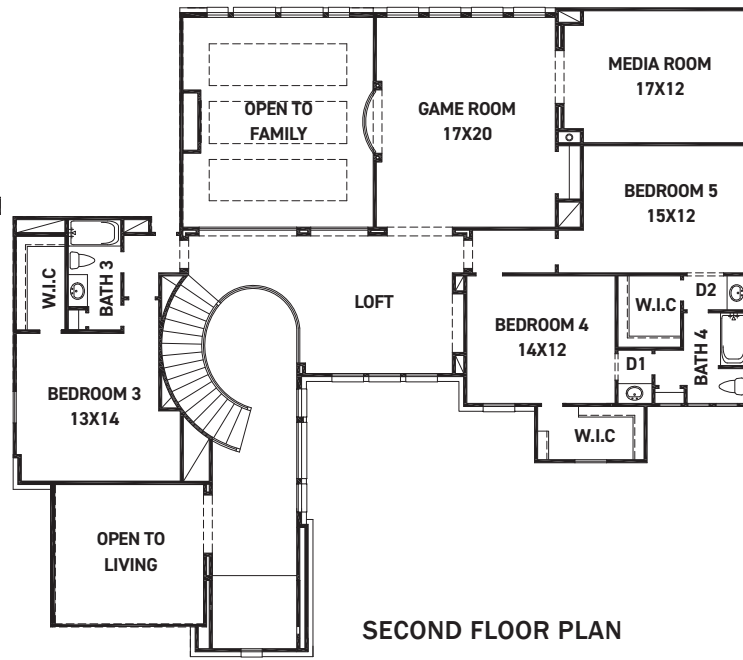
OPT. MAIN CLOSET LAYOUT



OPT. BATH 5



OPT. BEDROOM 6



SECOND FLOOR PLAN

REV 02/23 (9016)



These drawings are conceptual only and are for the convenience of reference. They should not be relied upon as representations, express or implied, of the final detail of the residences. The builder expressly reserves the right to make modifications, revisions, and changes it deems desirable in its sole and absolute discretion. Dimensions and square footages are approximate and may vary with actual construction.



FEDRICK HARRIS  
ESTATE HOMES