



Villa Rotonda



ELEVATION 1



ELEVATION 2



ELEVATION 3



ELEVATION 4



ELEVATION 5



ELEVATION 6

REV 3/21 (8503)



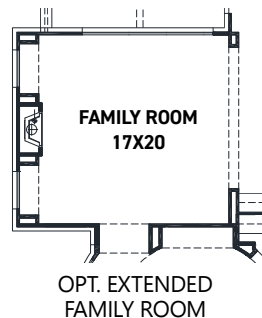
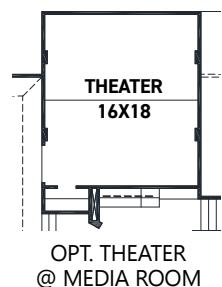
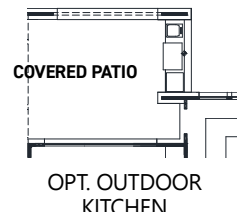
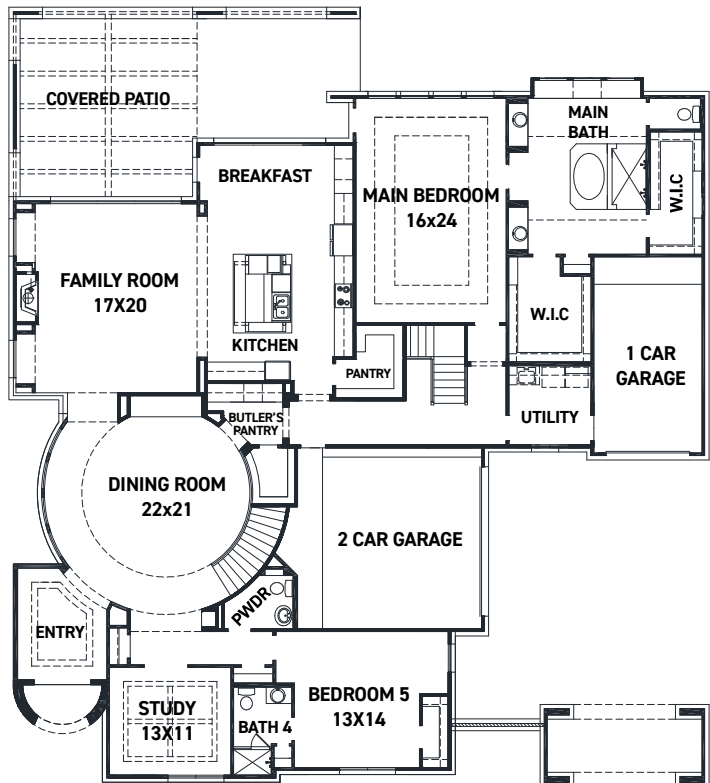
These drawings are conceptual only and are for the convenience of reference. They should not be relied upon as representations, express or implied, of the final detail of the residences. The builder expressly reserves the right to make modifications, revisions, and changes it deems desirable in its sole and absolute discretion. Dimensions and square footages are approximate and may vary with actual construction.



FEDRICK HARRIS
ESTATE HOMES



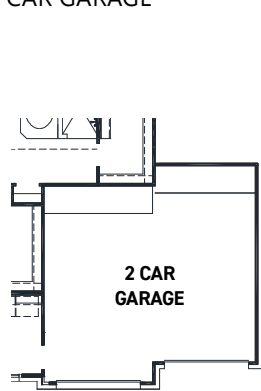
Villa Rotonda



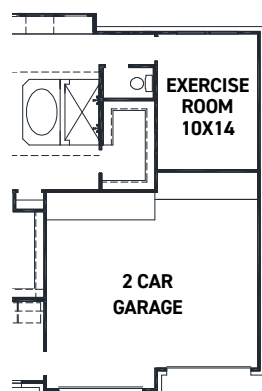
FIRST FLOOR PLAN

FEATURES:

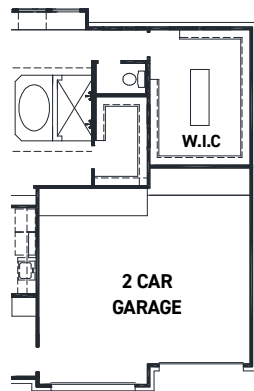
- 5,557 SQUARE FT.
- 5 BEDROOM
- 4 1/2 BATHROOM
- 3 CAR GARAGE



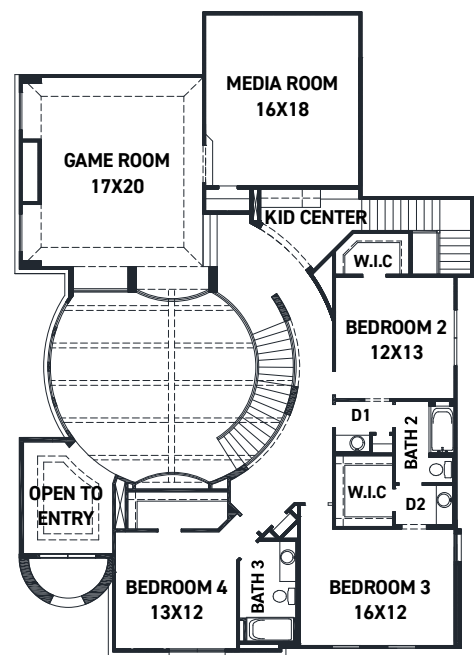
OPT. 3RD BAY



OPT. 3RD BAY W/ EXERCISE ROOM



OPT. 3RD BAY W/ MAIN CLOSET



SECOND FLOOR PLAN

REV 3/21 (8503)



These drawings are conceptual only and are for the convenience of reference. They should not be relied upon as representations, express or implied, of the final detail of the residences. The builder expressly reserves the right to make modifications, revisions, and changes it deems desirable in its sole and absolute discretion. Dimensions and square footages are approximate and may vary with actual construction.



FEDRICK HARRIS
ESTATE HOMES