



Villa Vecchio



ELEVATION 1



ELEVATION 2

REV 02/23 (105A)



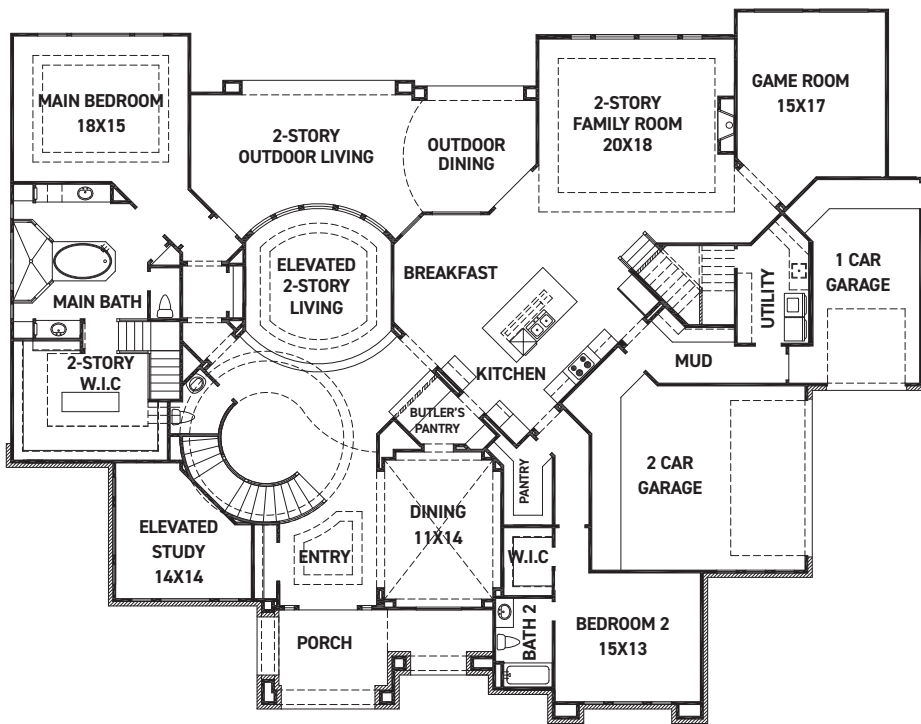
These drawings are conceptual only and are for the convenience of reference. They should not be relied upon as representations, express or implied, of the final detail of the residences. The builder expressly reserves the right to make modifications, revisions, and changes it deems desirable in its sole and absolute discretion. Dimensions and square footages are approximate and may vary with actual construction.



FEDRICK HARRIS
ESTATE HOMES



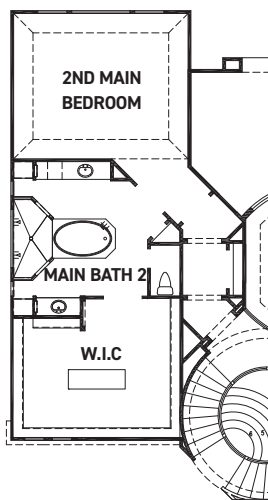
Villa Vecchio



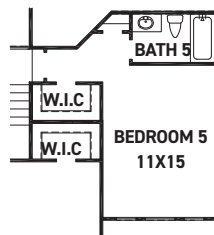
FIRST FLOOR PLAN

FEATURES:

- 5,509 SQUARE FT.
- 4 BEDROOM
- 4 1/2 BATHROOM
- 3 CAR GARAGE



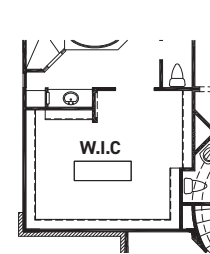
OPT. SECOND MAIN BEDROOM



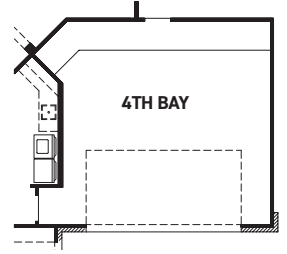
OPT. BEDROOM 5 W/ BATH 5



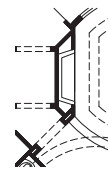
OPT. BEDROOM 6 W/ BATH 6



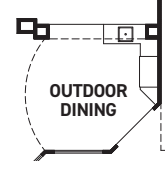
OPT. MAIN CLOSET W/ 2ND MAIN BEDROOM



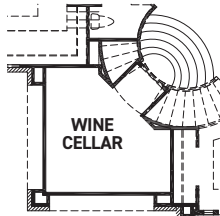
OPT. 4TH BAY



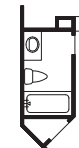
OPT. FIREPLACE @ LIVING



OPT. OUTDOOR KITCHEN



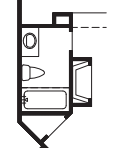
OPT. WINE CELLAR



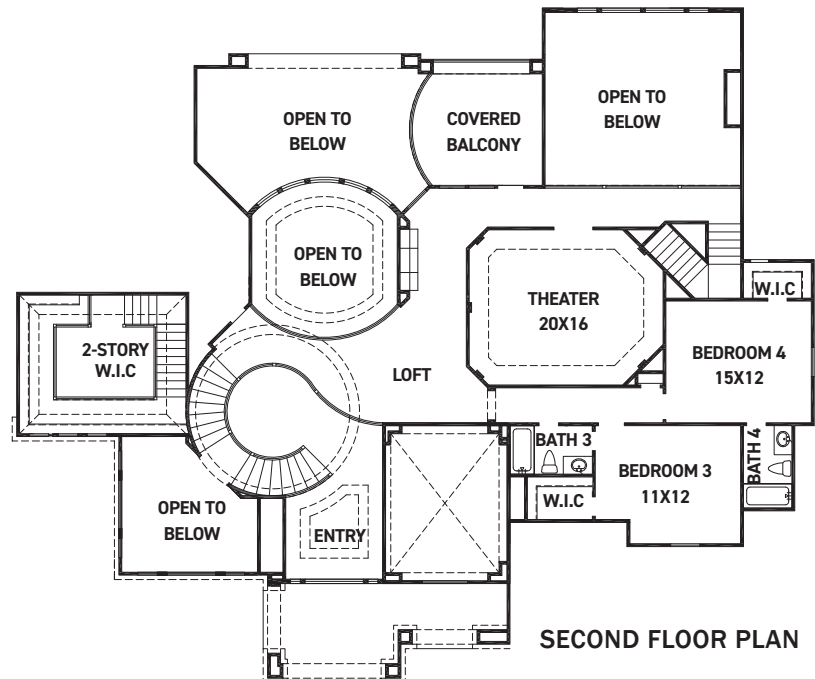
OPT. CABANA BATH



OPT. FIREPLACE @ OUTDOOR LIVING



OPT. CABANA BATH W/ FIREPLACE



SECOND FLOOR PLAN

REV 02/23 (105A)



These drawings are conceptual only and are for the convenience of reference. They should not be relied upon as representations, express or implied, of the final detail of the residences. The builder expressly reserves the right to make modifications, revisions, and changes it deems desirable in its sole and absolute discretion. Dimensions and square footages are approximate and may vary with actual construction.



FEDRICK HARRIS
ESTATE HOMES