



Villa Versailles



ELEVATION 1



ELEVATION 2



ELEVATION 3

REV 07/23 (9014)



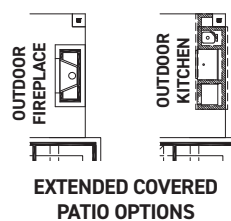
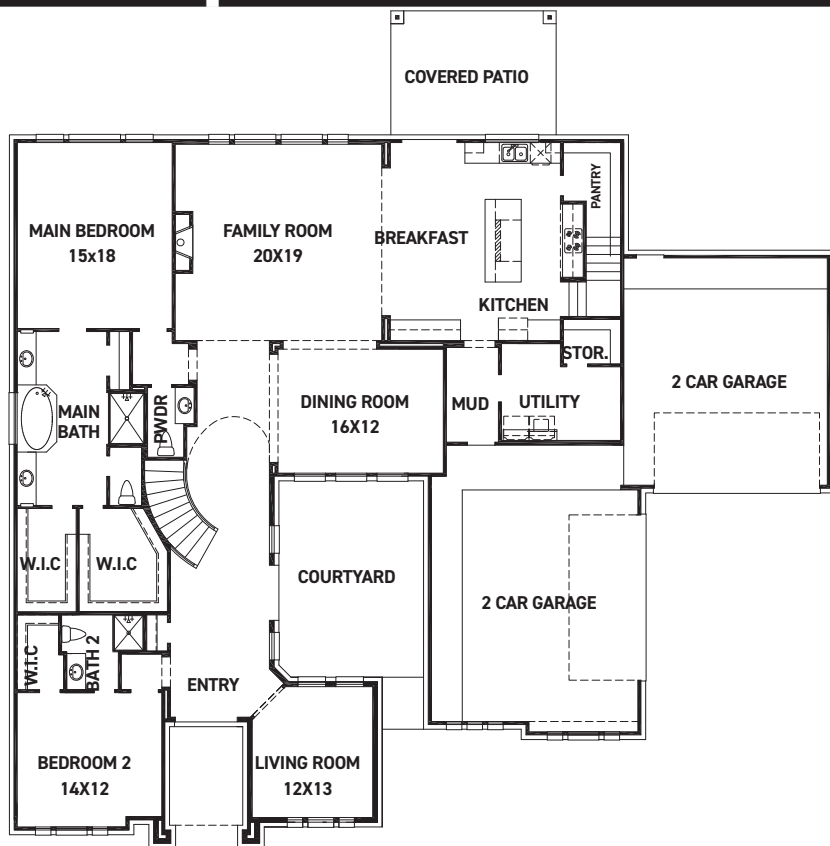
These drawings are conceptual only and are for the convenience of reference. They should not be relied upon as representations, express or implied, of the final detail of the residences. The builder expressly reserves the right to make modifications, revisions, and changes it deems desirable in its sole and absolute discretion. Dimensions and square footages are approximate and may vary with actual construction. Due to design and footage requirements not all options/elevations are available in all locations.



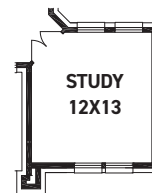
FEDRICK HARRIS
ESTATE HOMES



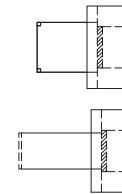
Villa Versailles



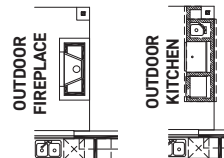
EXTENDED COVERED PATIO OPTIONS



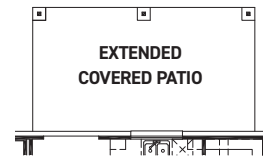
OPT. STUDY @ LIVING



OPT. TABLES @ BREAKFAST



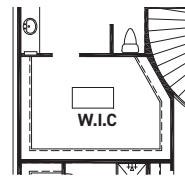
COVERED PATIO OPTIONS



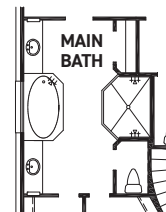
OPT. EXTENDED COVERED PATIO



OPT. MAIN BEDROOM BAY +34 SQ. FT.



OPT. COMBINED MAIN CLOSET

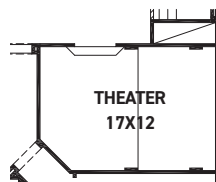


OPT. ENLARGED MAIN SHOWER

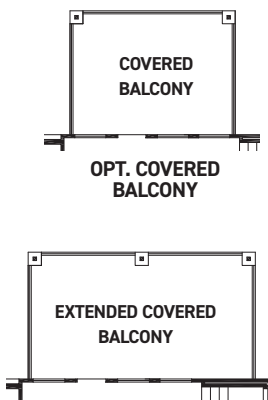
FIRST FLOOR PLAN

FEATURES:

- 4,460 SQUARE FT.
- 4 BEDROOM
- 4 1/2 BATHROOM
- 4 CAR GARAGE

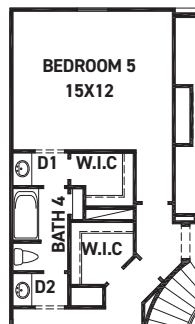


OPT. THEATER

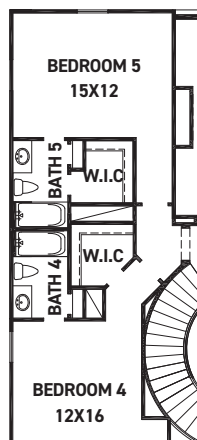


OPT. COURTYARD FIREPLACE

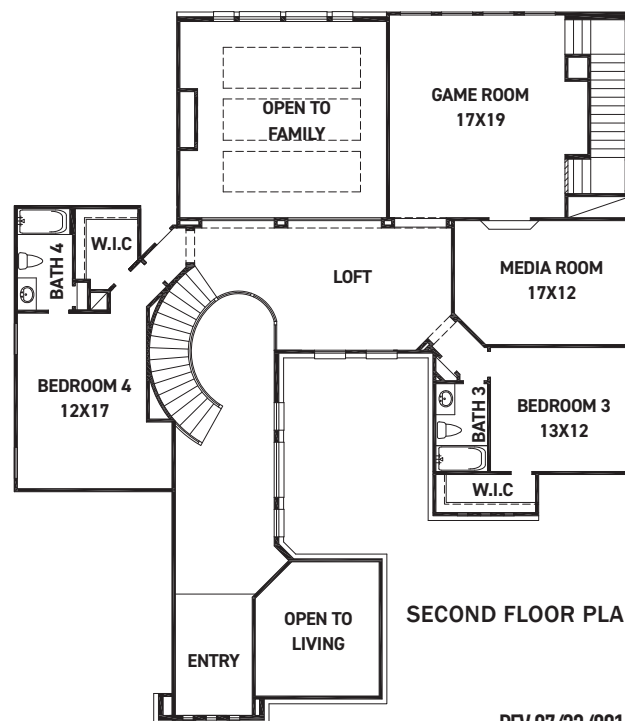
OPT. EXTENDED COVERED BALCONY



OPT. BEDROOM 5 +295 SQ. FT.



OPT. BEDROOM 5 W/ BATH 5 +295 SQ. FT.



SECOND FLOOR PLAN

REV 07/23 (9014)



These drawings are conceptual only and are for the convenience of reference. They should not be relied upon as representations, express or implied, of the final detail of the residences. The builder expressly reserves the right to make modifications, revisions, and changes it deems desirable in its sole and absolute discretion. Dimensions and square footages are approximate and may vary with actual construction. Due to design and footage requirements not all options/elevations are available in all locations.



FEDRICK HARRIS
ESTATE HOMES