



Villa Versailles



ELEVATION 1



ELEVATION 2



ELEVATION 3

REV 2/21 (9014)



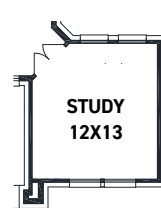
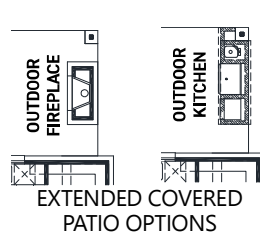
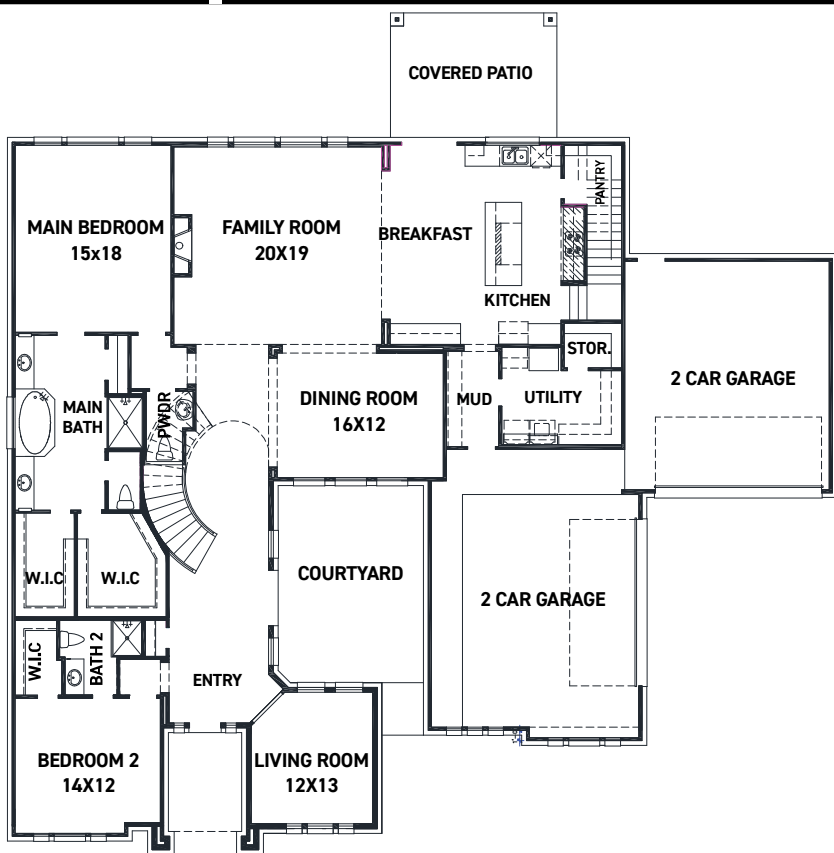
These drawings are conceptual only and are for the convenience of reference. They should not be relied upon as representations, express or implied, of the final detail of the residences. The builder expressly reserves the right to make modifications, revisions, and changes it deems desirable in its sole and absolute discretion. Dimensions and square footages are approximate and may vary with actual construction.



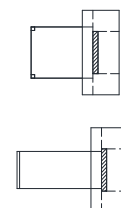
FEDRICK HARRIS
ESTATE HOMES



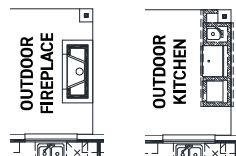
Villa Versailles



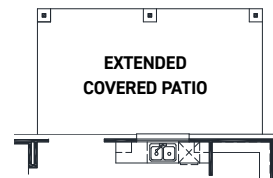
OPT. STUDY @ LIVING



OPT. TABLES @ BREAKFAST



COVERED PATIO OPTIONS



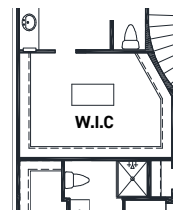
OPT. EXTENDED COVERED PATIO



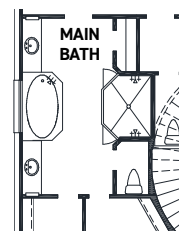
OPT. MAIN BEDROOM BAY



OPT. COURTYARD BALCONY



OPT. COMBINED MAIN CLOSET

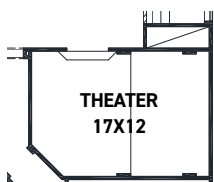


OPT. ENLARGED MAIN SHOWER

FIRST FLOOR PLAN

FEATURES:

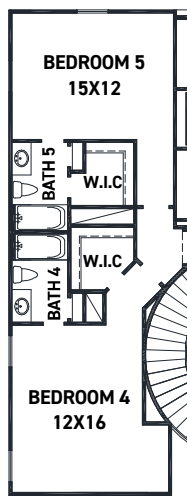
- 4,460 SQUARE FT.
- 4 BEDROOM
- 4 1/2 BATHROOM
- 4 CAR GARAGE



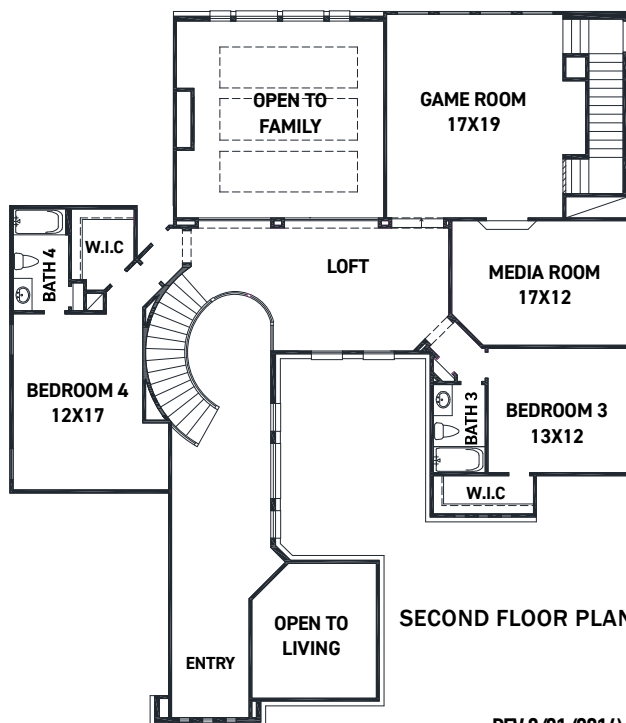
OPT. THEATER



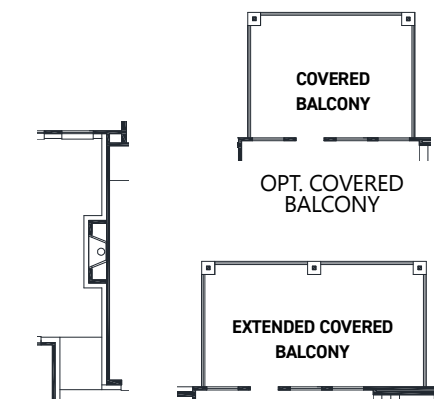
OPT. BEDROOM 5



OPT. BEDROOM 5 W/ BATH 5



SECOND FLOOR PLAN



OPT. COURTYARD FIREPLACE

OPT. EXTENDED COVERED BALCONY

REV 2/21 (9014)



These drawings are conceptual only and are for the convenience of reference. They should not be relied upon as representations, express or implied, of the final detail of the residences. The builder expressly reserves the right to make modifications, revisions, and changes it deems desirable in its sole and absolute discretion. Dimensions and square footages are approximate and may vary with actual construction.



FEDRICK HARRIS
ESTATE HOMES