



# Windsor



**ELEVATION 5**



**ELEVATION 7**



**ELEVATION 9**



**ELEVATION 10**



**ELEVATION 11**



**ELEVATION 12**

REV 04/24 (6013)



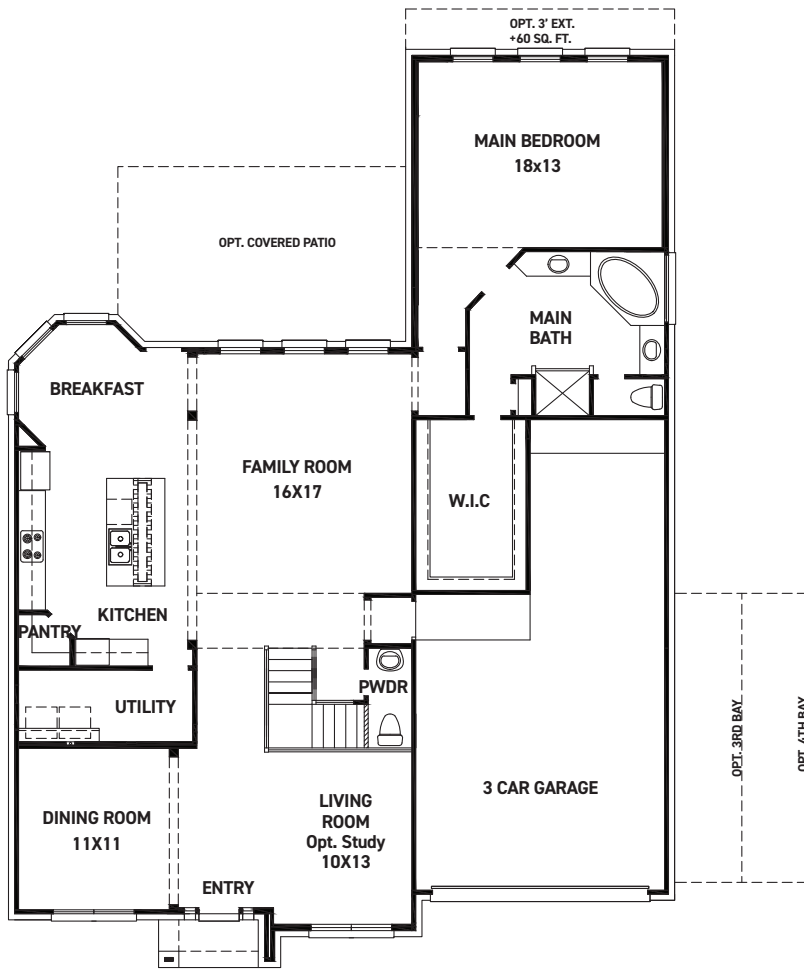
These drawings are conceptual only and are for the convenience of reference. They should not be relied upon as representations, express or implied, of the final detail of the residences. The builder expressly reserves the right to make modifications, revisions, and changes it deems desirable in its sole and absolute discretion. Dimensions and square footages are approximate and may vary with actual construction. Due to design and footage requirements not all options/elevations are available in all locations.



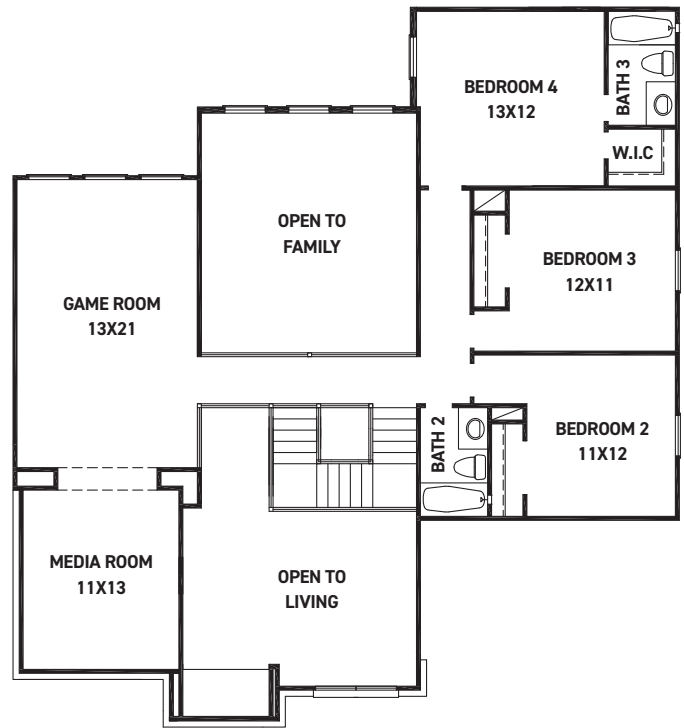
[newmarkhomes.com](http://newmarkhomes.com)



# Windsor



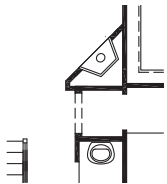
FIRST FLOOR PLAN



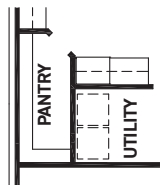
SECOND FLOOR PLAN

## FEATURES:

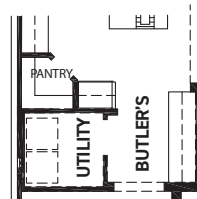
- 3,312 SQUARE FT.
- 4 BEDROOM
- 3 1/2 BATHROOM
- 3 CAR GARAGE



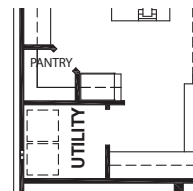
OPT. FIREPLACE



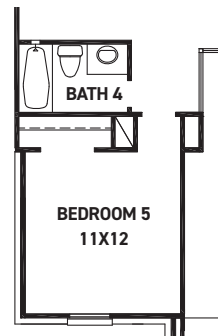
OPT. EXTENDED PANTRY



OPT. BUTLER'S PANTRY



OPT. PLANNING CENTER



OPT. BEDROOM 5 W/ BATH 4

REV 04/24 (6013)



These drawings are conceptual only and are for the convenience of reference. They should not be relied upon as representations, express or implied, of the final detail of the residences. The builder expressly reserves the right to make modifications, revisions, and changes it deems desirable in its sole and absolute discretion. Dimensions and square footages are approximate and may vary with actual construction. Due to design and footage requirements not all options/elevations are available in all locations.



[newmarkhomes.com](http://newmarkhomes.com)