



Lower Interest Rates Available!

Flex Allowance to use YOUR way on select Quick Delivery Homes

Lower Interest Rate Available*



195 Grand Canyon Way

Kyle, TX 78640 | MLS #1918146

\$529,990

	Beds	Baths	Stories	Garage
2,805	5	4.5	2	2

Don't miss out on this exceptional opportunity! With up to \$20,000 available in flex cash allowance and up to an additional \$11,000 in closing cost contributions through our preferred lender, this MOVE-IN ready Heidelberg plan is simpl... [READ MORE »](#)

Plan Your Visit

Anthem 50' Model
Koblenz Plan
122 Smithsonian Lane
Kyle, TX 78640

MODEL HOME HOURS
Monday to Saturday: 10 a.m. - 6 p.m.
Sunday: 12 p.m. - 6 p.m.

Community Sales Manager
Sarah Johansen
(651) 331-9592
sjohansen@newmarkhomes.com



ELEVATION 1



ELEVATION 2



ELEVATION 3



ELEVATION 4 (ANTHEM USE 5)

REV 07/23 (501)



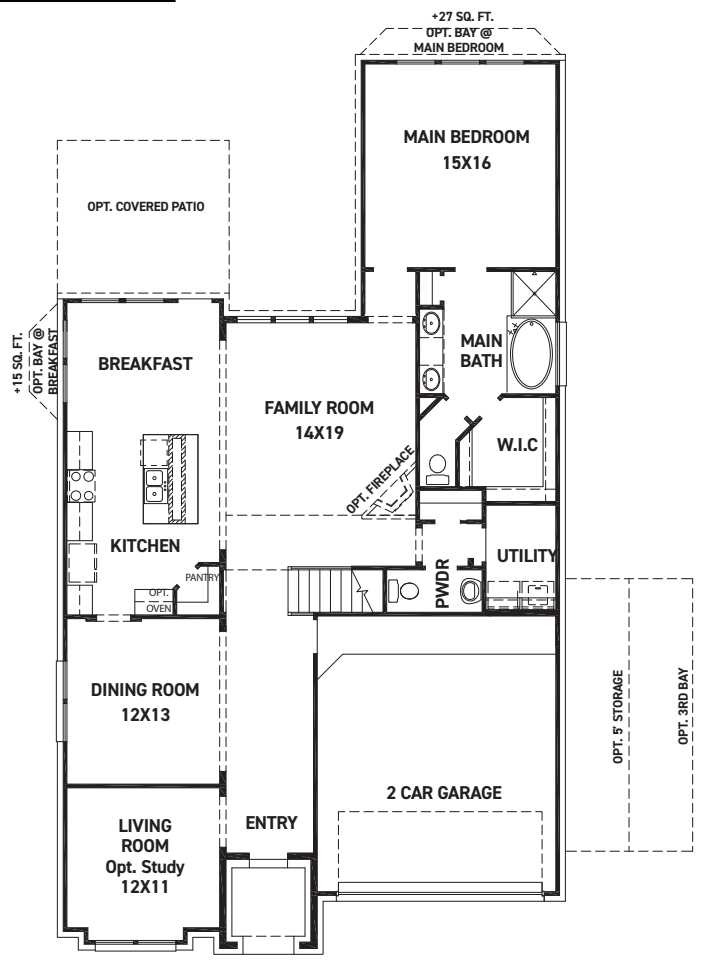
These drawings are conceptual only and are for the convenience of reference. They should not be relied upon as representations, express or implied, of the final detail of the residences. The builder expressly reserves the right to make modifications, revisions, and changes it deems desirable in its sole and absolute discretion. Dimensions and square footages are approximate and may vary with actual construction.



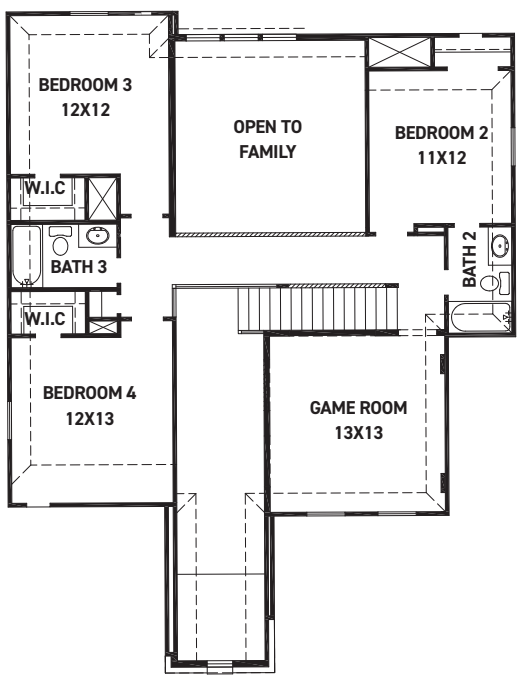
newmarkhomes.com



Heidelberg



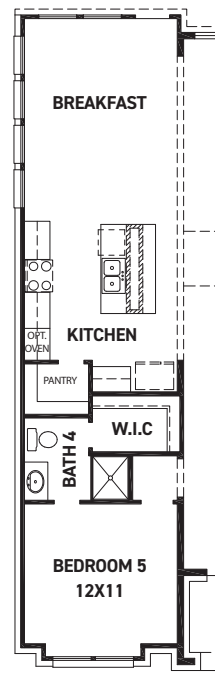
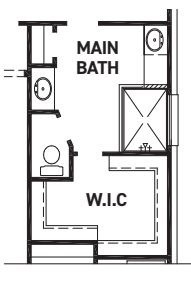
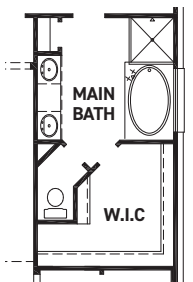
FIRST FLOOR PLAN



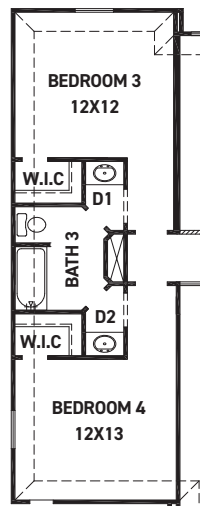
SECOND FLOOR PLAN

FEATURES:

- 2,799 SQUARE FT.
- 4 BEDROOM
- 3 1/2 BATHROOM
- 2 CAR GARAGE



OPT. BEDROOM 5 W/ BATH 4 & EXTENDED BREAKFAST



OPT. JACK & JILL BATHROOM

REV 07/23 (5010)



These drawings are conceptual only and are for the convenience of reference. They should not be relied upon as representations, express or implied, of the final detail of the residences. The builder expressly reserves the right to make modifications, revisions, and changes it deems desirable in its sole and absolute discretion. Dimensions and square footages are approximate and may vary with actual construction.



newmarkhomes.com