



Lower Interest Rates Available!

Flex Allowance to use YOUR way on select Quick Delivery Homes

Flex Allowance Available*



17019 Hattie Trace

Austin, TX 78738 | MLS #3855357

\$839,990

	Beds	Baths	Stories	Garage
2,973	4	3.5	2	2

This move-in ready beauty is waiting for you! Flex cash allowance, plus **up to an additional \$11,000 in closing cost contributions with our preferred lender** is available on this home, now is the perfect time to make this home yours. Int... [READ MORE »](#)

Plan Your Visit

Sweetwater 40' Model
Sierra Plan
New Model NOW Open
6212 Bower Well Road
Austin, TX 78738

MODEL HOME HOURS
Monday to Saturday: 10 a.m. - 6 p.m.
Sunday: 12 p.m. - 6 p.m.

Community Sales Manager
Bob Kennedy
(512) 299-4333
Bkennedy@newmarkhomes.com



ELEVATION 1



ELEVATION 2



ELEVATION 3

REV 06/23 (40SG)

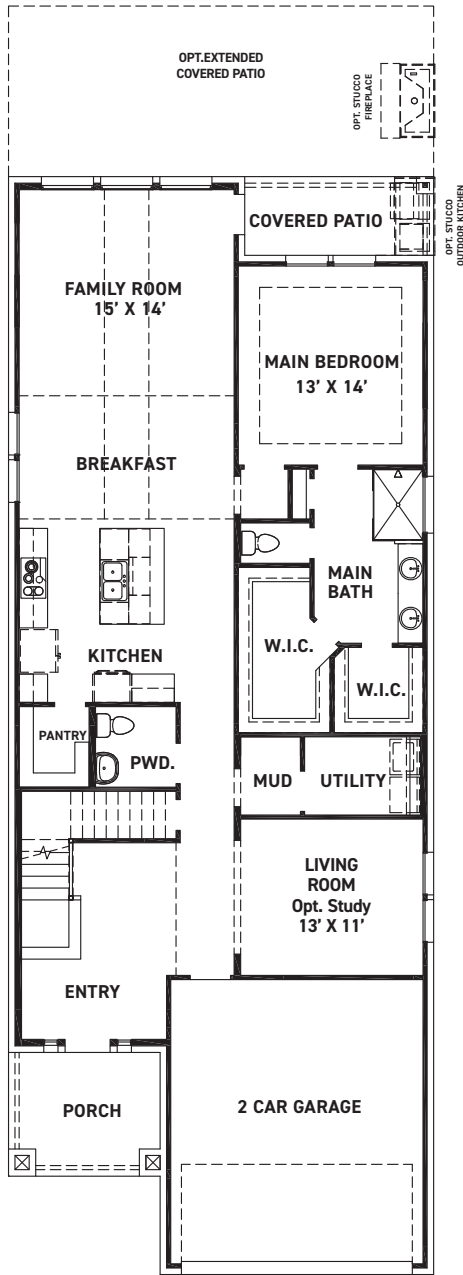


These drawings are conceptual only and are for the convenience of reference. They should not be relied upon as representations, express or implied, of the final detail of the residences. The builder expressly reserves the right to make modifications, revisions, and changes it deems desirable in its sole and absolute discretion. Dimensions and square footages are approximate and may vary with actual construction. Due to design and footage requirements not all options/elevations are available in all locations.



newmarkhomes.com

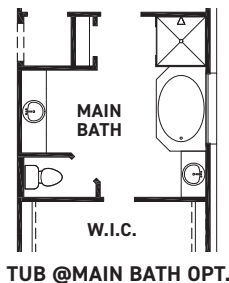
July 27, 2024



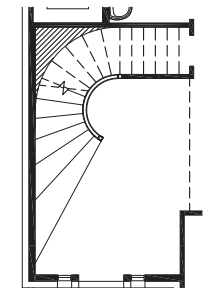
FIRST FLOOR PLAN

FEATURES:

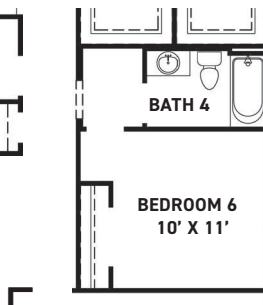
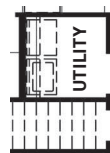
- 2973 SQUARE FT.
- 4 BEDROOM
- 2-1/2 BATHROOM
- 2 CAR GARAGE



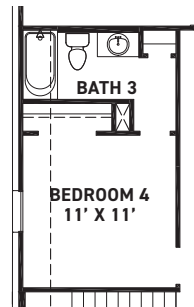
TUB @ MAIN BATH OPT.



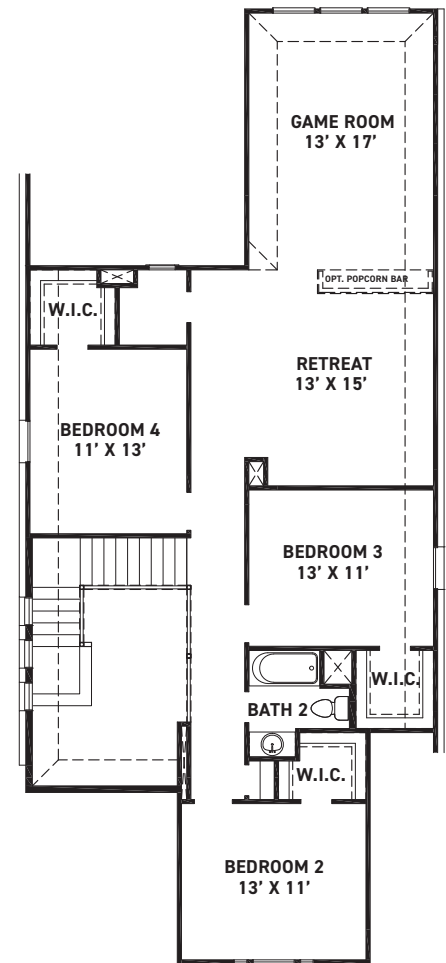
OPT. CURVED STAIRS



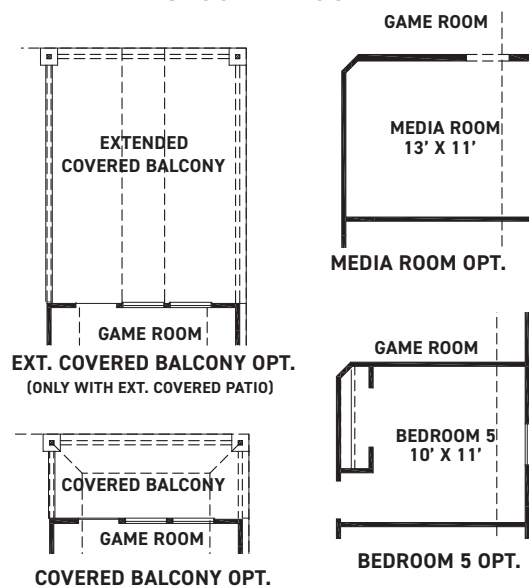
BEDROOM 6/BATH 4 OPT.



OPT. BEDROOM 4/
BATH 3



SECOND FLOOR PLAN



REV 06/23 (40



These drawings are conceptual only and are for the convenience of reference. They should not be relied upon as representations, express or implied, of the final detail of the residences. The builder expressly reserves the right to make modifications, revisions, and changes it deems desirable in its sole and absolute discretion. Dimensions and square footages are approximate and may vary with actual construction. Due to design and footage requirements not all options/elevations are available in all locations.



newmarkhomes.com

July 27, 2024