



## Lower Interest Rates Available!

Flex Allowance to use YOUR way on select Quick Delivery Homes

Lower Interest Rate Available\*



## 7513 Boyd Haven Drive

Austin, TX 78744 | MLS #8542884

\$609,990

	Beds	Baths	Stories	Garage
2,377	3	2.5	1	2

Don't let this opportunity slip away! With **up to \$20,000 available in flex cash allowance, plus up to an additional \$11,000 in closing cost contributions with our preferred lender,** now is the perfect time to seize the moment. Located i... [READ MORE »](#)

## Plan Your Visit

Easton Park Charm Plan  
Charm Plan  
7804 Skytree Drive  
Austin, TX 78744

### MODEL HOME HOURS

Monday to Saturday: 10 a.m. - 6 p.m.  
Sunday: 12 p.m. - 6 p.m.

Community Sales Manager

Carlos Fermin

(281) 428-6713

[cfermin@newmarkhomes.com](mailto:cfermin@newmarkhomes.com)



**ELEVATION 1**



**ELEVATION 2**



**ELEVATION 3**

REV 07/23 (Q

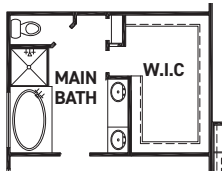


These drawings are conceptual only and are for the convenience of reference. They should not be relied upon as representations, express or implied, of the final detail of the residences. The builder expressly reserves the right to make modifications, revisions, and changes it deems desirable in its sole and absolute discretion. Dimensions and square footages are approximate and may vary with actual construction.



[newmarkhomes.com](http://newmarkhomes.com)

July 27, 2024



OPT. TUB @  
MAIN BATH



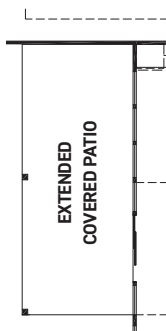
OPT. SLIDING DOOR  
@ MAIN BEDROOM



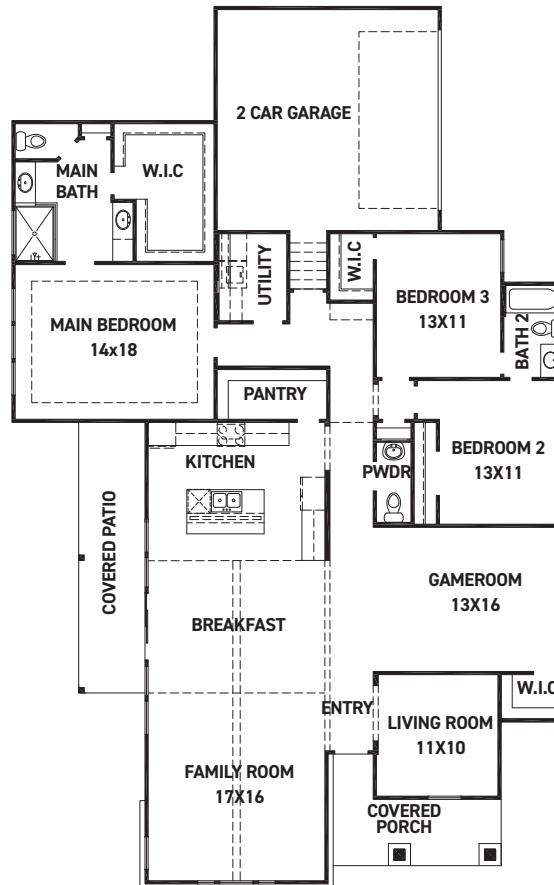
OPT. SLIDING DOOR  
@ KITCHEN



OPT. 12FT SLIDING DOOR  
@ BREAKFAST



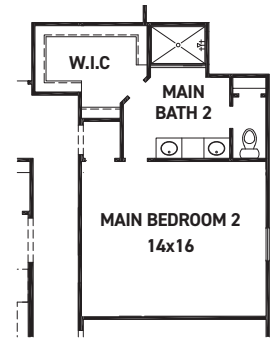
OPT. EXTENDED  
COVERED PATIO



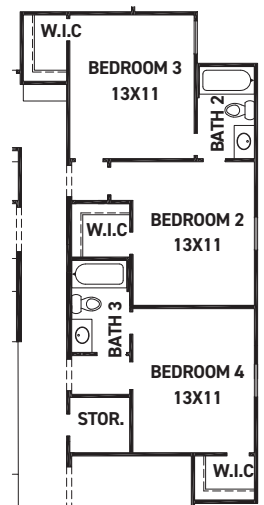
FIRST FLOOR PLAN

## FEATURES:

- 2,377 SQUARE FT.
- 3 BEDROOM
- 2 1/2 BATHROOM
- 2 CAR GARAGE



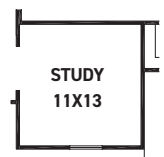
OPT. 2ND MAIN BEDROOM  
W/ MAIN BATH 2



OPT. BEDROOM 4 W/  
BATH 3 ILO GAME ROOM



OPT. BEDROOM 4,  
BATH 3, & POWDER  
ILO STORAGE



OPT. STUDY  
@ LIVING

REV 07/23 (Q)



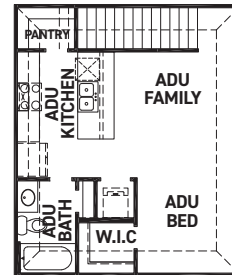
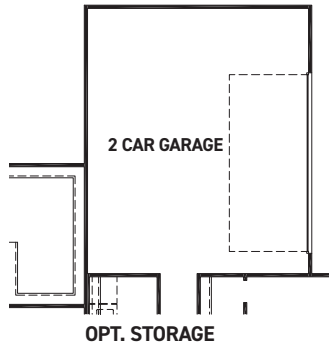
These drawings are conceptual only and are for the convenience of reference. They should not be relied upon as representations, express or implied, of the final detail of the residences. The builder expressly reserves the right to make modifications, revisions, and changes it deems desirable in its sole and absolute discretion. Dimensions and square footages are approximate and may vary with actual construction.



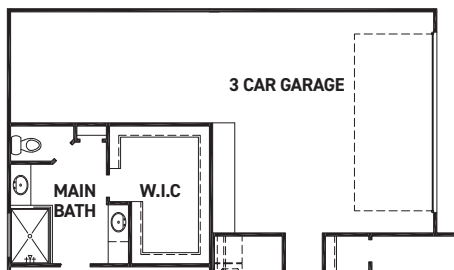
[newmarkhomes.com](http://newmarkhomes.com)

July 27, 2024

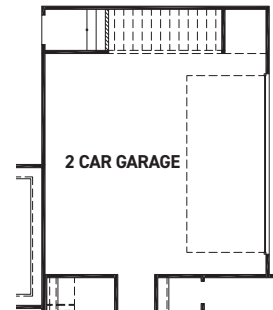




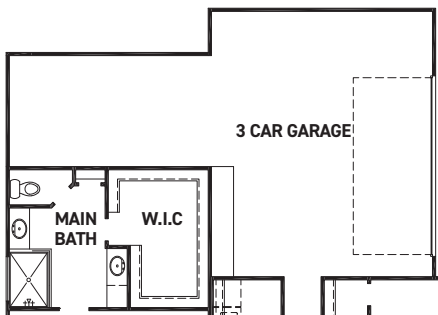
OPT. A.D.U.  
+506 SQ. FT.



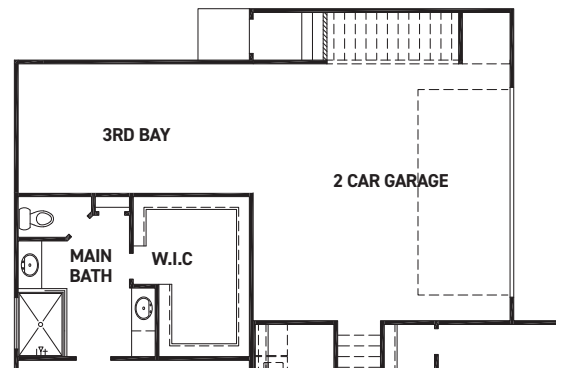
OPT. 3RD BAY



OPT. FIRST FLOOR W/ A.D.U



OPT. 3RD BAY W/ STORAGE



OPT. FIRST FLOOR W/ A.D.U  
& 3RD BAY

REV 07/23 (Q)



These drawings are conceptual only and are for the convenience of reference. They should not be relied upon as representations, express or implied, of the final detail of the residences. The builder expressly reserves the right to make modifications, revisions, and changes it deems desirable in its sole and absolute discretion. Dimensions and square footages are approximate and may vary with actual construction.



[newmarkhomes.com](http://newmarkhomes.com)

July 27, 2024



REV 07/23 (Q



These drawings are conceptual only and are for the convenience of reference. They should not be relied upon as representations, express or implied, of the final detail of the residences. The builder expressly reserves the right to make modifications, revisions, and changes it deems desirable in its sole and absolute discretion. Dimensions and square footages are approximate and may vary with actual construction.

[newmarkhomes.com](http://newmarkhomes.com)

July 27, 2024