



Lower Interest Rates Available!

Flex Allowance to use YOUR way on select Quick Delivery Homes

Flex Allowance Available*



1075 Sage Thrasher Circle

Dripping Springs, TX 78620 | MLS #4467006

\$589,990

	Beds	Baths	Stories	Garage
2,340	3	2.5	2	2

Don't let this opportunity pass you by! Flex cash allowance, plus **up to an additional \$15,000 in closing cost contributions with our preferred lender** is available on this home, now is the perfect time to make this home in the newest se... [READ MORE »](#)

Plan Your Visit

Headwaters Artisan Plan - 50'
Newton Plan
166 Hazy Hills Loop
Dripping Springs, Texas 78620

MODEL HOME HOURS
Monday to Saturday: 10 a.m. - 6 p.m.
Sunday: 12 p.m. - 6 p.m.

Community Sales Manager
Dori Conway
(612) 720-1090
dconway@newmarkhomes.com



ELEVATION A



ELEVATION B (ANTHEM USE H)



ELEVATION C



ELEVATION D



ELEVATION E (ANTHEM USE J)

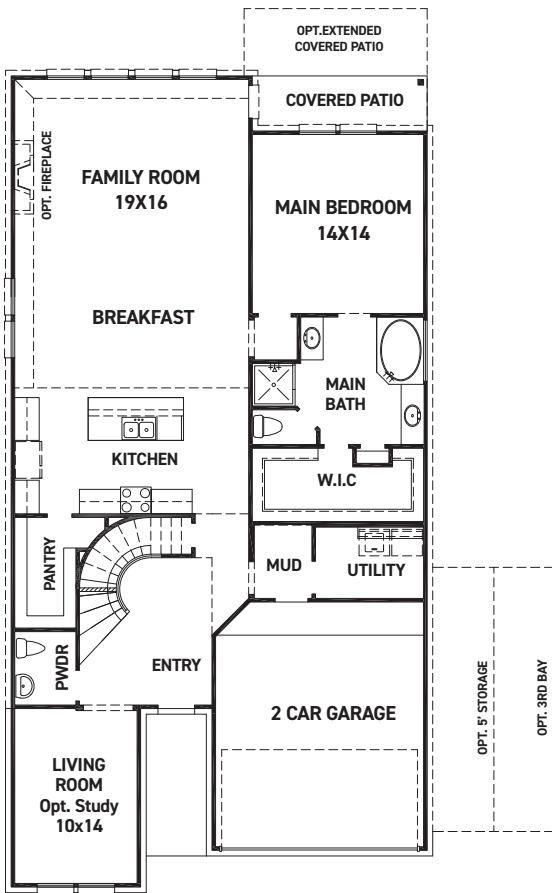
REV 03/23 (452N)



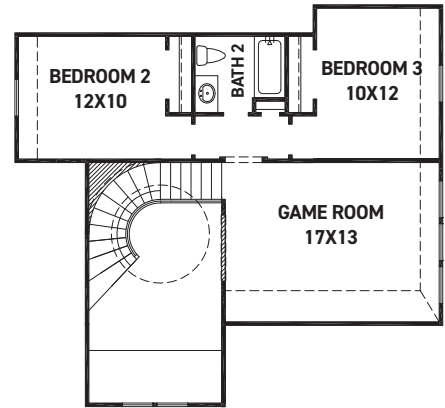
These drawings are conceptual only and are for the convenience of reference. They should not be relied upon as representations, express or implied, of the final detail of the residences. The builder expressly reserves the right to make modifications, revisions, and changes it deems desirable in its sole and absolute discretion. Dimensions and square footages are approximate and may vary with actual construction. Due to design and footage requirements not all options/elevations are available in all locations.



newmarkhomes.com



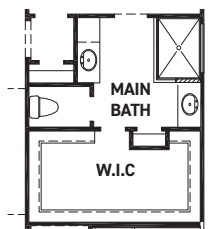
FIRST FLOOR PLAN



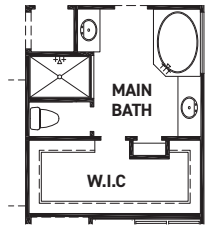
SECOND FLOOR PLAN

FEATURES:

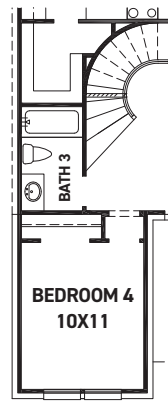
- 2,385 SQUARE FT.
- 3 BEDROOM
- 2 1/2 BATHROOM
- 2 CAR GARAGE



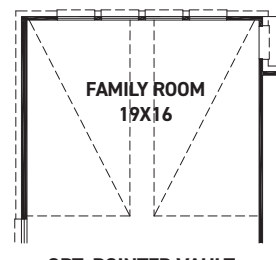
OPT. MAIN BATH LAYOUT W/ ENLARGED SHOWER



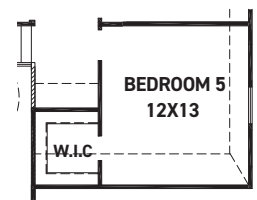
OPT. ENLARGED MAIN SHOWER W/ TUB



OPT. BEDROOM 4 W/ BATH 3



OPT. POINTED VAULT
OPT. ARCHED VAULT



OPT. BEDROOM 5 ILO GAME ROOM

REV 03/23 (452)



These drawings are conceptual only and are for the convenience of reference. They should not be relied upon as representations, express or implied, of the final detail of the residences. The builder expressly reserves the right to make modifications, revisions, and changes it deems desirable in its sole and absolute discretion. Dimensions and square footages are approximate and may vary with actual construction. Due to design and footage requirements not all options/elevations are available in all locations.



newmarkhomes.com